

# Contents:

---

<b><u>SAFETY INSTRUCTION</u></b>	<b><u>1</u></b>
Purpose of use	1
Operating Safety	1
Repair	1
Setting up location	2
Intended Environment	2
Connecting	2
Power Supply	2
Standards/Electro-Magnetic Compatibility	3
Recycling and disposal	3
Maintenance and care	3
FCC Compliance Statement	4
Declaration of Conformity	4
<b><u>INTRODUCTION</u></b>	<b><u>5</u></b>
Notes on these instructions	5
Our Target Group	5
Quality	5
Service	5
<b><u>INCLUDED EQUIPMENT</u></b>	<b><u>5</u></b>
<b><u>START-UP</u></b>	<b><u>6</u></b>
Preparations on Your Computer	6
Supported Monitor Settings	6
Display Properties	7
Unpacking	8
Installing the base plate	8
Connecting the Monitor	8
❶ Connecting VGA Signal Cable	9
❷ Connecting Audio Cable	9
❸ Connecting the Power Supply	9
Positioning of the Monitor	9
<b><u>CONTROLS</u></b>	<b><u>11</u></b>
<b><u>SETTING THE LCD MONITOR</u></b>	<b><u>11</u></b>
How to operate the OSD menu	11
Leaving the OSD menu	12
OSD Menu	12
Brightness / Contrast	12
Image control	12
Color	13
OSD Control	13
Other	13
Reset	13
Saving Energy	13

<b>SERVICE</b> .....	14
Troubleshooting.....	14
Finding the problem .....	14
Check Connections and Cables .....	14
Troubleshooting .....	14
Do you require additional support ?.....	15
<b>SPECIFICATIONS</b> .....	16
<b>WARRANTY</b> .....	17
Pixel Defects on LCDs (TFT-Displays).....	17
Liability limitations.....	19
Copying this manual .....	19



Device 

At the end of its life, the appliance must not be disposed of in household rubbish. Enquire about the options for environmentally-friendly disposal

Copyright © 2006

**Medion®** makes no warranty of any kind with regard to this material, including, but not limited to, the implied warranties of merchantability and fitness for a particular purpose.

**Medion®** shall not be liable for errors contained herein or for incidental or consequential damages in connection with the furnishing, performance, or use of this material.

**Medion®** assumes no responsibility for the use or reliability of its software on equipment that is not furnished by **Medion®**.

This document contains proprietary information that is protected by copyright. All rights are reserved. No part of this document may be photocopied, reproduced, or translated to another language without the prior written consent of **Medion®**.

The information in this document is subject to change without notice.

# Safety Instruction

---

Please read through this section carefully and follow the instructions given. In this way you will guarantee reliable operation and a long life for your LCD monitor. Always keep these instructions handy and close by your LCD monitor. Keep the instructions and the packaging so that if you sell or give away your LCD monitor you can give them to the new owner.

## Purpose of use

- This device is only suitable for **using in dry, internal rooms**.
- This device is intended for personal use only. It **not** intended for commercial use in a **heavy industry environment**. Use under extreme environmental conditions can result in damage to your device.

## Operating Safety

- **Never open the housing** of the LCD monitor! When the housing is open there is a **danger of injury** from electric shock, short-circuit and the danger of fire!
- Do not insert **any objects** through the slots and openings **into the inside of the LCD** (electrical shock, short-circuit and the danger of fire)!
- Slots and openings in the LCD monitor are for ventilation purpose. **Do not cover these openings**, as otherwise this may lead to overheating (overheating, danger of fire))!
- Do not allow **children** to play **unattended** on electrical equipment. Children may not always correctly recognize danger.
- **Prevent children** from access to packing material such as **foils**, because there is **risk of suffocation**.
- An **injury hazard** exists when the **display breaks**. Wear protective gloves to pack the broken parts and send them into your service center for proper **disposal**. Then wash your hands with soap, because it is possible for **chemicals** to escape.
- Never exert pressure on the display. This could break the monitor.
- Do not touch the display with your fingers or with sharp objects to avoid damage.

**Pull out the mains plug** and contact **Customer Services**, if...

- ... if the **power cord** is burnt or **damaged**. Replace the defective power cord with an original power cord. Under no circumstances may a defective power cord be repaired.
- ... if the **housing** of the device is **damaged** or **fluids have leaked into it**. Have the TV checked by customer service first. There may be a life-threatening risk of electrocution!

## Repair

- Leave all repairs of your LCD display to authorized and qualified personnel only.
- Should a repair be necessary, please contact one of our authorized service partners only.

## Setting up location

- In the first hours of operation, new devices may emit a typical, unavoidable but completely harmless smell, which will decline increasingly in the course of time.  
We recommend you to ventilate the room regularly, in order to counteract the formation of the smell. During the development of this product, we have made sure that the applicable limits are clearly fallen below.
- Keep your LCD display away from **moisture** and avoid **dust, heat** and **direct sunlight**. Failure to observe these instructions can lead to malfunctions or damage to the LCD display.
- Do **not** operate your device **in the open air**, because external influences, such as rain, snow, etc. could damage the device.
- Do **not** place **any containers filled with liquid** (vases or similar containers) **on the device**. The container could tip over and liquid can impair electrical safety.
- Do **not** place **any open sources of fire** (candles or similar objects) **on the device**.
- Pay attention to **sufficiently large clearances** in the wall cupboard. Maintain a **minimum clearance of 10 cm around the device** for sufficient ventilation.
- Place and operate all units on a **stable, level** and **vibration-free surface** in order to avoid the LCD display from falling.
- **Avoid** the **effects of dazzling, reflections** and a too distinct **contrast between light and darkness**, in order to protect your eyes.
- Take **regulator breaks** when working with your LCD monitor in order to avoid tension and fatigue.
- The optimum viewing distance is 5 times the screen diagonal.

## Intended Environment

- The LCD monitor can be operated at an ambient temperatures of between **+41°F** and **+95°F** (5° C to 35° C) and at a relative humidity of between 20% and 85% (without condensation).
- When switched off, the monitor can be stored at between **-4°F** and **+140°F** (-20° C - +60° C).
- After transporting your LCD monitor please wait until it has assumed the ambient temperature before connecting and switching it on. Extremely high variations in the **temperature or humidity** may result in condensation forming on the inside of the LCD monitor which could cause an **electrical short-circuit**.

## Connecting

Observe the following instructions to connect your LCD monitor properly:

### Power Supply

- Operate your LCD monitor mains (power supply) only on grounded sockets with **AC 100-240V~/ 50-60 Hz**. If you are not sure about the power supply at your location, check with your power company.
- For additional safety we recommend use of an **excessive voltage protection device** to protect your LCD monitor from damage resulting from **voltage surges** or **lightning**.
- To interrupt the LCD monitor from mains (power supply) disconnect the plug from the socket.
- The power **socket** must be in the vicinity of your LCD monitor and within reach of the power cables.
- If you use an **extension cable**, ensure that it fulfills the **VDE requirements**. Please ask your electrician.
- You should lay the LCD Monitor cables in a manner that no one can trip or step on it.
- To avoid damage of cable **do not place any objects or furniture on the cable**.
- Your device has an On and Off switch. The LCD monitor can be switched on or off by means of it. **No electricity** is consumed if the switch is at **OFF** (0).

## Standards/Electro-Magnetic Compatibility

Your monitor fulfils the requirements for electro-magnetic compatibility and electrical safety specified in the following standards:

- EN 55022** Information technology equipment - Radio disturbance characteristics - Limits and methods of measurement.
- EN 55024** Information technology equipment - Immunity characteristics - Limits and methods of measurement.
- EN 60950** Safety of information technology equipment.
  - Provide an interval of at least one meter from high-frequency and magnetic sources of interference (television sets, loudspeakers, mobile telephones, etc.) in order to avoid malfunctions and data loss.
  - The failure of individual or groups of luminous points can arise in rare cases, in spite of the most up-to-date manufacture, because of the highly complex technology.
  - Your device corresponds to the ISO 13406-2 Class II (Pixel Error Class) European Norm (see page 17).

## Recycling and disposal

This device and its packaging was produced mostly from materials which can be disposed of in an environmentally friendly manner and be professionally recycled.

After its use the device will be taken back and recycled or use will be made of its useful material, if it is returned in a condition corresponding to its intended use. Parts not usable will be properly disposed of. Should you have any questions concerning the disposal please contact your dealer or our service.



**Disposal of Old Electrical & Electronic Equipment (Applicable in the European Union and other European countries with separate collection systems)**

This symbol on the product or on its packaging indicates that this product shall not be treated as household waste. Instead it shall be handed over to the applicable collection point for the recycling of electrical and electronic equipment. By ensuring this product is disposed of correctly, you will help prevent potential negative consequences for the environment and human health, which could otherwise be caused by inappropriate waste handling of this product. The recycling of materials will help to conserve natural resources. For more detailed information about recycling of this product, please contact your local city office, your household waste disposal service or the shop where you purchased the product.

## Maintenance and care

You can increase the service life of your LCD monitor by taking the following precautions:

**Caution!** There are **no parts which can be serviced** or cleaned inside of the monitor housing.

- Before cleaning **always disconnect the power line** and all connection cables.
- Do **not use any solvents**, caustic or gaseous cleaning agents .
- Clean the display with a soft, lint-free cloth.
- Ensure that no water droplets remain on the screen. Water can cause **permanent discoloration**.
- Do not expose the screen to **bright sunlight** or **ultraviolet radiation**.
- Please keep the packaging material safely and use it exclusively to transport the monitor.

## FCC Compliance Statement

This equipment has been tested and found to comply with the limits for a Class B digital device, pursuant to Part 15 of FCC Rules. These limits are designed to provide reasonable protection against harmful interference in a residential installation. This equipment generates, uses, and can radiate radio frequency energy and, if not installed and used in accordance with the instructions, may cause harmful interference to radio communications. However, there is no guarantee that interference will not occur in a particular installation. If this equipment does cause harmful interference to radio or television reception, which can be determined by turning the equipment off and on, the user is encouraged to try to correct the interference by one or more of the following measures:

- Reorient or relocate the receiving antenna.
- Increase the separation between the equipment and receiver.
- Connect the equipment into an outlet on a circuit different from that to which the receiver is connected.
- Consult the dealer or an experienced technician for help.

Changes or modifications not expressly approved by the party responsible for compliance could void the user's authority to operate the equipment. Shielded interface cables, if any, must be used in order to comply with the emission limits.

## Declaration of Conformity

**According to 47CFR, Parts 2 and 15 for  
Class B Personal Computers:**

We: **Medion Aktiengesellschaft**  
(Name of the Responsible Party)

Located at: **Gänsemarkt 16 – 18**  
**D-45127 Essen**  
**Germany**  
(Address, City, State, Zip Code)

**Fax : 0 201 / 81 081 – 227**  
(Facsimile Number **for conformity issues only**)

Declare under sole responsibility that the product identified herein, complies with 47CFR Parts 2 and 15 of the FCC rules as a Class B digital device. Each product marketed, is identical to the representative unit tested and found to be compliant with the standards. Records maintained continue to reflect the equipment being produced can be expected to be within the variation accepted, due to quantity production and testing on a statistical basis as required by 47CFR §2.909. Operation is subject to the following two conditions: (1) This device may not cause harmful interference, and (2) This device must accept any interference received, including interference that may cause undesired operation. The above named party is responsible for ensuring that the equipment complies with the standards of 47CFR §§15.101 to 15.109.

Trade Name: **Medion**

Type or  
Model Number: **MD 30004**

Party Responsible: **MEDION AG**

Executed on (Date), at (Place): **1<sup>st</sup> of February, 2006, Essen**

# Introduction

---

## Notes on these instructions

We have arranged these instructions so that you can quickly find the subject related information in the table of contents.

The purpose of these instructions is helping you operate your LCD display safely, quickly and easily.

## Our Target Group

Thank you for purchasing our LCD display. We thank you for your confidence in our products and are pleased to greet you as a new customer. These instructions are intended for initial users as well as advanced users. Regardless of the possible professional utilization, this display is intended for private use only.

## Quality

We focused on great features, ease of use and reliability in manufacturing your LCD monitor. The balanced hardware and software concept offers you an advanced display design which will provide you a great deal of pleasure for your work and entertainment.

## Service

Service and support will be available every time you use your new LCD Display. Contact us, we will be glad to help. This manual contains a separate chapter on the subject of service beginning on page 14.

## Included Equipment

---

Please check your new LCD Display for completeness. Notify us within 14 days after purchase if it is not complete. With your LCD monitor you receive:

- LCD screen
- Data cable (VGA, DVI, YpBpR)
- Audio cable
- Connection cable
- Documentation

# Start-Up

---

**Note:**

Before start-up always read the Chapter "**Safety Instruction**" on page 1.

## Preparations on Your Computer

If you have operated your computer previously with a CRT monitor, it will be necessary for you to make a few preparations. This is required when your previous monitor was operated with settings which are not supported by your new LCD monitor.

## Supported Monitor Settings

This monitor supports the following modes:

Resolution	Horizontal Frequency	Vertical Frequency
720 x 400	31.47 KHz	70 Hz
640 x 480	31.47 KHz	60 Hz
640 x 480	35.0 KHz	66.7 Hz
640 x 480	37.86 KHz	72.8 Hz
640 x 480	37.5 KHz	75 Hz
800 x 600	35.2 KHz	56.3 Hz
800 x 600	37.88 KHz	60.3 Hz
800 x 600	46.87 KHz	75 Hz
800 x 600	48.08 KHz	72.2 Hz
832 x 624	49.72 KHz	74.6 Hz
1024 x 768	48.36 KHz	60 Hz
1024 x 768	56.48 KHz	70.1 Hz
1024 x 768	60.02 KHz	75 Hz
1280 x 1024	63.98 KHz	60.02 Hz
1280 x 1024	79.98 KHz	75 Hz
1152 x 864	67.5 KHz	75 Hz
1280 x 960	60.0 KHz	60 Hz
848 x 480	31.02 KHz	60 Hz
1280 x 720	44.96 KHz	59.9 Hz
1280 x 768	47.78 KHz	59.9 Hz
1280 x 768	60.29 KHz	74.9 Hz
1360 x 768	47.71 KHz	60 Hz
1440 x 900	55.94 KHz	59.9 Hz
1440 x 900	70.64 KHz	75 Hz
1680 x 1050*	65.29 KHz	60 Hz

\*recommended physical resolution

Under Windows 9X/ME/2000/XP you can check the setting of your graphic card under „**Display properties**“.



## Display Properties

This Windows program offers you the possibility of adapting the display to your monitor. This includes items such as the background image, the screen saver, the Active Desktop (Web) as well as other settings for your monitor and video card.

The program can be started as follows:

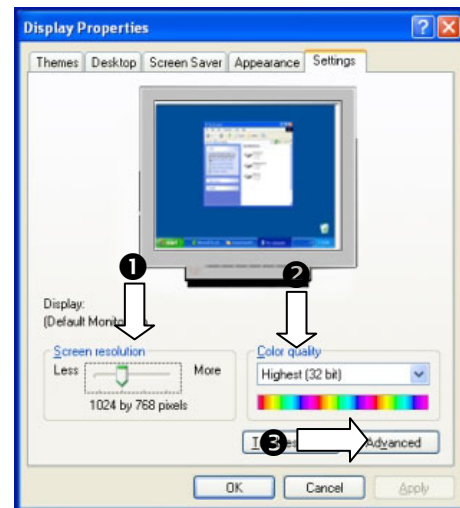
- Right mouse click on Windows desk top and left mouse click on **"Properties"**.
- or
- Start the **"Display"** program in **"System control"**.

The resolution can be set under **"Screen resolution"**. (❶). Your monitor can display a maximum of 1680 x 1050.

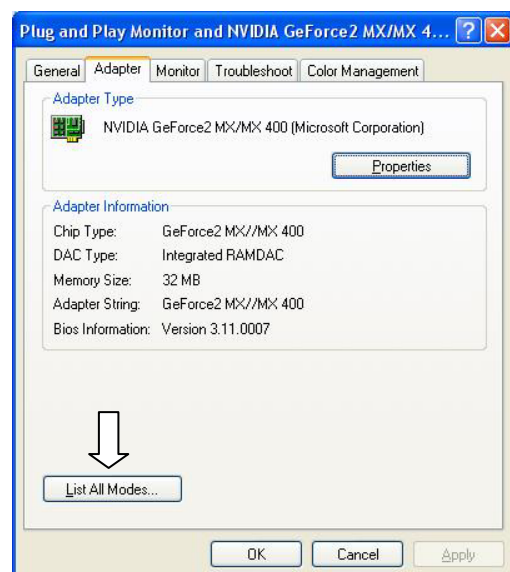
Then click **"Color quality"** (❷) to set the color depth (number of colors displayed). Your monitor supports a maximum color depth of 16 million colors corresponding to 32 bit or "True Color".

This resolution is equivalent to the physical resolution. TFT screens reach their full image quality at their physical resolution.

The image repeat frequency can be set under **"Advanced"** (❸).



A window with the characteristics of your video card appears depending on the configuration of your computer.



(similar picture)

Under **"Adapter"** you can change the desired value in the selection field **"List All Modes..."**. The value for the LCD should be 60 Hz and, depending on the setting, not exceed 75 Hz.

### Attention!

If your setting does not coincide with the values supported by your display, you may not see any image.

Switch your old device on again and set the applicable values under **'Display Characteristics'** in accordance with the aforementioned options in this case.

## Unpacking

1. Please keep the packaging material well and use it exclusively to transport the monitor.
2. Screws to attach the base plate will be in the packaging. Keep them away from children; there is a danger of swallowing them.

## Installing the base plate

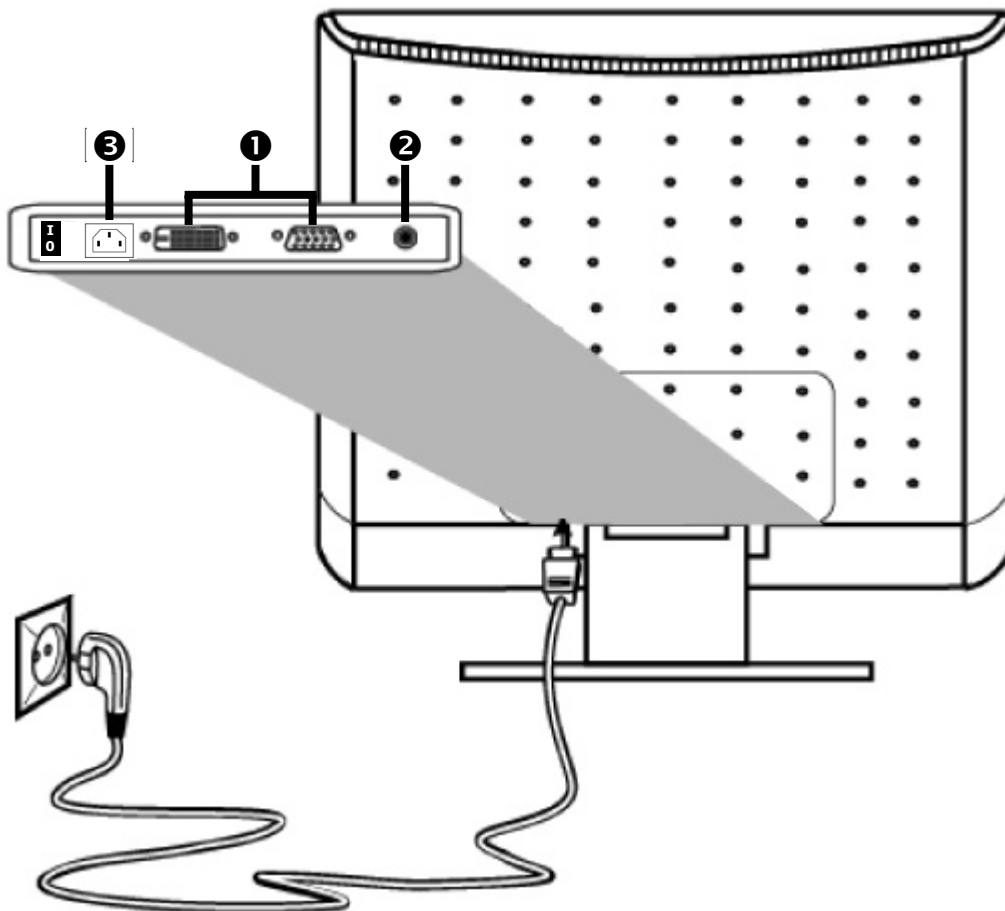
1. Place a soft, clean pad under the monitor, so that it will not be possible for the surfaces to be scratched or damaged.
2. Place the monitor with the back on a flat and stable surface.
3. Position the base plate on the foot of the monitor.
4. Use a coin or a slot screwdriver and attach the base plate with the screws supplied.

## Connecting the Monitor

To start using the LCD monitor straight away, please read the "**Safety Instruction**" section (page 1).

We recommend that you also read all the other sections as these contain detailed explanations and tips on how to use your LCD display.

1. Ensure that the LCD monitor is not yet connected to the line power (power cord not yet plugged in) and neither the LCD monitor nor the computer is switched on.
2. Prepare your computer for the LCD monitor if necessary (see previous pages) with the correct settings for your LCD.



## ❶ Connecting VGA Signal Cable

3. Plug the signal cable into the matching VGA sockets on the computer. If your PC features a DVI port, you can connect your monitor by means of the DVI plug. You can connect a YPbPr signal source by means of the YPbPr - VGA data cable.

## ❷ Connecting Audio Cable

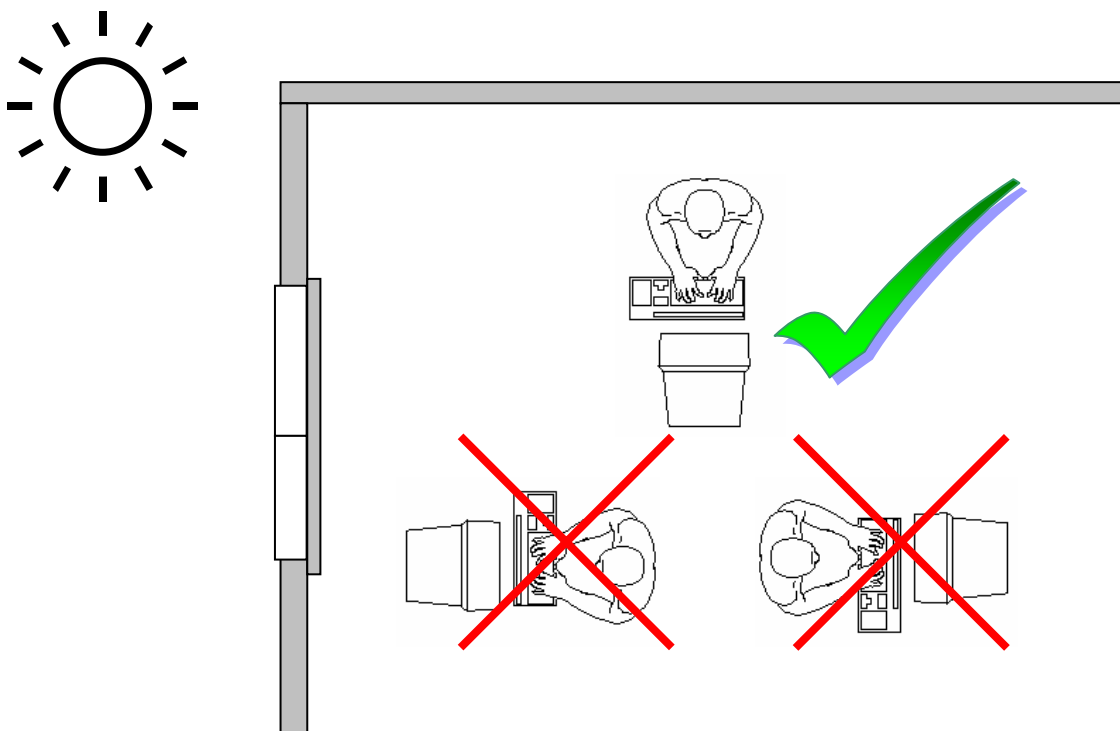
4. Plug the audio cable into the matching sockets on the computer.

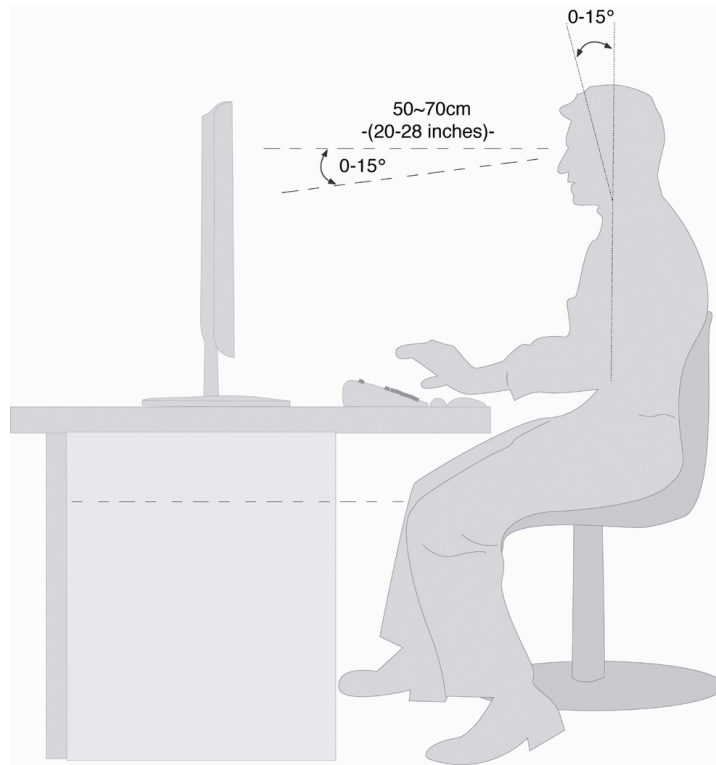
## ❸ Connecting the Power Supply

5. Plug the power supply cable into the power supply socket of the LCD screen and plug the electric plug into a socket close to the LCD screen (same circuit).
6. Your monitor has an ON/OFF switch, by means of which you can switch the monitor on or off, on the back. If the switch is set to **0**, then no power is consumed. Set the switch to **I** and next switch your monitor on using the on/off switch.
7. Then switch on your computer.

## Positioning of the Monitor

Please ensure that the monitor is set up in such a way that that reflections, glare and light-dark contrast are avoided (as this will make the screen less attractive to look at!)

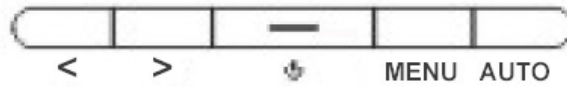






(similar picture)

- **Hand's support rest:** 2" – 4"
- Top line of screen should keep eye's level or be a little beneath
- **Eye's distance to screen:** 20" – 28"
- **Legroom** (vertical): at least 26"
- **Legroom** (horizontal): at least 24"

## Controls



Symbol	Meaning	Description
<	Down Decrease volume	<ul style="list-style-type: none"><li>When OSD is active this key sets a parameter value and decreases it.</li><li>Executing it directly lowers the volume.</li></ul>
>	Up Increase volume	<ul style="list-style-type: none"><li>When OSD is active this key sets a parameter value and increases it.</li><li>Executing it directly raises the volume.</li></ul>
	On/Off switch	<ul style="list-style-type: none"><li>With this switch you can switch the LCD monitor ON and OFF.</li></ul>
	Operation indicator	<ul style="list-style-type: none"><li>Indicates the operating state. Blue = Normal mode, Orange = Stand-by mode.</li></ul>
<b>MENU</b>	OSD	<ul style="list-style-type: none"><li>When this key is pressed the OSD (ON screen display) starts on your LCD monitor.</li><li>Confirm you selection by pressing this key.</li></ul>
<b>AUTO</b>	Auto adjustment	<ul style="list-style-type: none"><li>With this key you can automatically adjust the image.</li><li>When in the OSD menu this key exits the selected menu item or goes back one screen.</li></ul>

## Setting the LCD Monitor

The **On Screen Display** (OSD) is a menu that the monitor overlays temporarily. You can set certain parameters for the LCD monitor on the OSD menu (ON screen display).

### How to operate the OSD menu

Press the **menu key** to activate the OSD.

1. Select the options from the main menu with the keys < or >.
2. Confirm your choice with the **MENU** key.
3. Select the options from the sub-menu with the keys < or >.
4. Confirm your choice with the **MENU** key.
5. Set the desired value with the with the keys < or >.
6. Press **AUTO** to exit the menu point and the sub-menu.

The adjustment of the different menu items may vary. Please refer to the bottom line of the OSD, where additional instructions regarding the adjustment of this menu item are being displayed.

## Leaving the OSD menu

To exit the OSD menu you have different possibilities:

- Choose **Exit**
- The OSD vanishes from the screen automatically, when you do not press any key on the monitor during the preset time interval (factory setting is 10 seconds).

## OSD Menu

The following will introduce the main functions and settings of the OSD.



(similar picture)

### Note:

Due to technical modifications the menus described here might differ from those on your screen.

## Brightness / Contrast

- **Brightness**  
Adjust the brightness of your monitor with the keys < and >.
- **Contrast**  
Adjust the contrast of your monitor with the keys < and >.

## Image control

- **Auto adjustment**  
Perform an automatic adjustment by means of the **MENU** key. The best parameters for your monitor will be set.
- **H. Position**  
Adjust the horizontal picture of the monitor.
- **V. Position**  
Adjust the vertical picture of the monitor.
- **Clock**  
Adjust the clock of the monitor. The larger the value the wider the display will appear. The lower the value the denser the display will appear.
- **Phase**  
Adjust the phase to optimize the display of your monitor.
- **Sharpness**  
Control the sharpness of the picture (only if the resolution is lower than 1280x1024)

## Color

- **9300K / 6500K**  
Set one of the preset values using the < and > keys.
- **Custom color**  
Select this option using the MENU key, if you want to set the values for red, green and blue individually. The new values will be saved automatically on exiting this menu item.

## OSD Control

- **H. OSD Phase**  
Adjust the horizontal position of the OSD.
- **V. OSD Phase**  
Adjust the vertical position of the OSD.
- **OSD timeout**  
You can set the idle time interval, after which the OSD will vanish.

## Other

- **Language**  
You have several possibilities to choose the language of the OSD.
- **Input**  
Your monitor supports different input sources. A VGA or YPbPr signal is fed through the VGA connection. A digital signal source is attached to the DVI connection.
- **Speaker volume**  
Set the volume of the integrated speakers with the keys < and >. If the OSD is not displayed, the volume can be set directly with the keys < and >.
- **Informationen**  
Displays or hides the info window.

## Reset

With this menu item you can reset to the factory settings. All manual adjustments are erased. All parameters now have the same values as when the unit was shipped.

## Saving Energy

This monitor can be switched into various states of energy saving by the respective computer or operating system. This meets the current requirements for reduction of power consumption.

The monitor supports the following states of low energy consumption:

Status	Power consumption (nominal value)	Color of the indicator	Standby mode (approx.)
ON	< 50 W	Blue	-
OFF	< 5 W	Orange	3 seconds

The monitor remains – depending on the operating system – in the state of low power consumption, until you press a button of the keyboard or move the mouse (if available).

It takes approx. 3 seconds for the monitor to switch from **standby mode** to normal operation.

# Service

---

## Troubleshooting

If your LCD monitor should have problems please check if it is properly installed and plugged according to the information given in the "**Start-Up**" section beginning on page 6). If the problems cannot be solved, read the following chapter for possible solution.

## Finding the problem

Many times, problems have simple causes. We would like to give you some tips to solve some common problems. Should these tips not help, please call us!

### Check Connections and Cables

Start by carefully checking all cable connections visually. If the indicator lamps do not function, ensure that the LCD monitor and computer are properly connected to the line power.

## Troubleshooting

### No display on screen:

Check:

- **Network supply:** The network cable must rest securely in the socket and the network switch must be switched on.
- **Signal source:** Please check that the source of the signal (computer, or other source) is switched on and that the connecting cables are resting securely in the sockets.
- **Image refresh frequency:** The current image refresh frequency must be suitable for the LCD monitor.
- **Power saving mode:** Press any desired key and move the mouse to deactivate the mode.
- **Screensaver:** Press a key on the keyboard or move the mouse if the screensaver of the computer is activated.
- **Signal cable pins:** If pins are bent, please contact your service dealer.
- Set the appropriate values for your LCD monitor (see "**Preparations on your computer**", page 6).

### Picture runs or not stable:

Check:

- **Signal cable pins:** If pins are bent, please contact your service dealer.
- **Signal cable pins:** The plugs of the signal cable must rest securely in the sockets.
- **Video card:** Check whether the settings are correct.
- **Image refresh frequencies:** Select permissible values for your graphic settings.
- **Monitor output signal:** The monitor output signal of the computers must match the technical data of the monitor.
- Remove any interfering equipment (portable telephones, loudspeakers, etc.) from the vicinity of your LCD monitor.
- Avoid using monitor extension cables.

### Characters displayed dark, picture too small, too large or not centered, etc.:

- Readjust the corresponding settings (setting LCD monitor, page 11).

### Colors not displayed cleanly:

- Check the signal cable pins. If pins are bent, please contact your service dealer.
- Readjust the corresponding settings.
- Avoid using monitor extension cables.



**The display is too light or too dark:**

- Check that the video output level of the computer matches the technical data of the monitor.
- Select Auto Setup, to optimize the settings for brightness and contrast. The display should show a text page (e.g. Explorer, Word, etc.), to optimize it.

**The image is jittering:**

- Check whether the operating voltage matches the technical specifications of the monitor.
- Select Auto Setup to optimize the settings for pixel and phase synchronization. For optimization the screen should display a text page (e.g. Explorer, Word, ...).

**Do you require additional support ?**

If the suggestions in the above section have not solved your problem, please contact the hotline. We will try and help you over the telephone. However, before you contact your Technology Center, please keep the following information available:

- How is your computer configured?
- What additional peripherals do you use?
- What messages, if any, appear on your screen?
- What software were you using when the error occurred?
- What steps have you already undertaken to solve the problem?
- If you have already been given a customer number, please keep this available.

# Specifications

Parameter	Data	
Visible display size	20,1"	
Resolution	1680 x 1050 (WSXGA)	
Refresh rate	max. 75 Hz	
Brightness	300 cd/m <sup>2</sup> (typ)	
Contrast	800:1 (typ.)	
Viewing angle (horizontal/vertikal)	88° / 88°	
Refresh rate	8 ms (typ.)	
Video input	Analog (15-wired mini Sub-D ) Digital (24-wired DVI-D)	
HDTV Video signal via DVI with HDCP decoding	With the resolution of: 1080i @ 50/60Hz 720p @ 50/60Hz 576p @ 50Hz 480i/p @ 60Hz	
HDTV Video signal via YPbPr (connected to VGA in)	With the resolution of: 1080i @ 50/60Hz 720p @ 50/60Hz 576i/p @ 50Hz 480i/p @ 60Hz	
User control	OSD ON/OFF	
Input voltage	AC 100-240 V ~ 50/60 Hz	
Nominal value	1.5 A	
Power consumption	max. 50 W	
Dimensions	473 mm x 432 mm x 227 mm	
Weight	approx. 8.2 Kg (without packaging)	
Temperatures	Operating	+5° C - +35° C
	Storage	-20° C - +60° C
Humidity (without condensation)	Operating	< 80 %
	Storage	< 95 %
Speakers	2 x 2 W	
Certification	TCO '99 ISO 13406-2	

## WARRANTY

---

The receipt serves as proof of first purchase and should be kept in a safe place. Your legal rights **are not limited** by these warranty conditions. It is required should you need to make use of the guarantee.

We guarantee that this equipment is in perfect working order. Upon production of the receipt, the remaining period of guarantee shall pass on from the original parts to the respective replacement parts. If you hand in this equipment to make use of the guarantee, you must remove all programs, data and removable storage media. Products which are sent without accessories will be replaced without accessories. The warranty obligation does not apply in the case of the problem being caused by an accident, a catastrophe, vandalism, misuse, incorrect use, ignoring the safety and maintenance regulations, changes by software, viruses or another piece of equipment or accessories or by other modifications not approved by ourselves. This limited guarantee declaration replaces all other guarantees of express or implied nature. This includes the guarantee of saleability or the suitability for a certain purpose but is not limited to this. In some countries the exclusion of implied guarantees is not permissible upon principle. In this case the validity of all express and implied guarantees is limited to the guarantee period. Once this period has expired, all guarantees become invalid. In some countries limiting the period of validity for implied guarantees is not permitted, so that the above limitation does not come into force. If you have any questions with regard to these guarantee conditions, please contact us.

### Pixel Defects on LCDs (TFT-Displays)

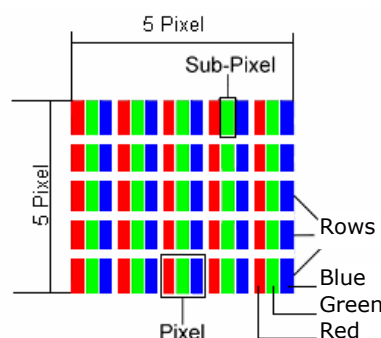
Active matrix LCDs (TFT) with a resolution of **1680 x 1050 Pixeln (WSXGA)** which are in turn composed of three sub-pixels each (red, green, blue), contain about 5.3 million addressable transistors. Because of this very high number of transistors and their extremely complex production process occasionally defective or incorrectly addressed pixels or sub-pixels may occur.

There have been several attempts in the past to define the acceptable number of defective pixels. But this can be difficult and varies widely between different manufacturers.

There have been several attempts in the past to define the acceptable number of defective pixels. But this can be difficult and varies widely between different manufacturers.

MEDION, therefore, adheres to the clear and strict requirements of **ISO 13406-2, class II**, for the warranty handling of all TFT display products. These requirements are summarized below.

Within ISO-standard 13406-2 the general requirements regarding pixel defects are defined. Pixel defects are classified into three failure types and four failure classes. Each individual pixel is made up of three sub-pixels in the primary colors (red, green, blue).



### Types of Pixel Failures:

- Type 1:  
A constantly lit pixel (a bright, white spot), even though it is **not** addressed. A white pixel is caused when all three sub-pixel are lit.
- Type 2:  
A pixel that does not light up (dark, black spot), although it is addressed.
- Type 3:  
Abnormal or defective red, green or blue sub-pixels. (E.g. constantly lit with half the brightness, one color is not shining, blinking or flickering, but not belonging to Type 1 or 2 Pixel Failures).

In addition: A cluster of type 3 (= 2 or more defective sub-pixels in an array of 5 x 5 pixel). A cluster is an array of 5 x 5 pixel (15 x 5 sub-pixel).

### Classes of pixel failures:

Failure class	Type 1	Type 2	Type 3		Cluster Type 3
I	0	0	0	-	0
<b>II</b>	<b>2</b>	<b>2</b>	<b>5</b>	-	<b>2</b>
III	5	15	50		5
IV	50	150	500		50

The acceptable number of defects of the above mentioned types in each failure class refers to one million pixels and has to be calculated according the physical resolution of the display.

This leads to a maximum allowed number in **class II type failure:**

For a resolution of	Mill. Pixel	Sub Pixel	Type (s. above)
1024 x 768 (15")	0.786432	2.359296	2 2 4 - 2
1280 x 1024 (17,18, 19")	1.310720	3.932160	3 3 7 - 3
1600 x 1200 (19")	1.920000	5.760000	4 4 10 - 4

Class I type failure only applies to special applications, e.g. medical applications, and results in corresponding price increases. Class II type failure is the established standard for quality conscious manufacturers with high quality displays.

#### Example 1 :

A 15" - XGA-display consists of 1024 horizontal and 768 vertical picture dots (pixel), which amounts to a total of 786,432 pixel. Related to one million pixels this translates into a factor of about 0.8.

Class II type failure consequently allows for two defects each of type 1 and type 2 and 4 defects of type 3 and 2 clusters of type 3.

#### Example 2:

A 17" - SXGA-display consists of 1280 horizontal and 1024 vertical picture dots (pixel), which amounts to a total of 1,31 million pixels. Based on one million pixels this translates into a factor of about 1.31.

Class II type failure consequently allows for three defects each of type 1 and type 2 and 7 defects of type 3 and 3 cluster of type 3.

These cases are normally not covered by warranty.

If the number of failures exceeds the figures of any category mentioned above then this may be covered by the warranty.

## **Liability limitations**

The contents of this manual are subject to unannounced changes caused by technical progress. Manufacturer and sales shall not be responsible for any damages which have been caused as a result of omissions or errors in the information provided in this manual:

1. Claims made against you by third parties based on loss or damage.
2. Loss or damage to your blanks, recordings or data.
3. Economic follow-on damage (including lost profit or savings) or associated damage even in the case that we have been informed of the possibilities of this type of damage.

In some countries the exclusion or limitation of accompanying or follow-on damage is not legally accepted so that the above limitations do not come into force.

## **Copying this manual**

This document contains legally protected information. All rights reserved. Copying in mechanical, electronic and any other form without the written approval of the manufacturer is prohibited.