

# 17 INCH LCD COLOR MONITOR



OPERATING INSTRUCTIONS

Copyright © 2003

All rights reserved.

This manual is protected by Copyright.

The Copyright is owned by **Medion**®.

Trademarks:

**MS-DOS**® and **Windows**® are registered trademarks of **Microsoft**®.

**Pentium**® is a registered trademark of **Intel**®.

Other trademarks are the property of their respective owners.

**Medion**® makes no warranty of any kind with regard to this material, including, but not limited to, the implied warranties of merchantability and fitness for a particular purpose.

**Medion**® shall not be liable for errors contained herein or for incidental or consequential damages in connection with the furnishing, performance, or use of this material.

**Medion**® assumes no responsibility for the use or reliability of its software on equipment that is not furnished by **Medion**®.

This document contains proprietary information that is protected by copyright. All rights are reserved. No part of this document may be photocopied, reproduced, or translated to another language without the prior written consent of **Medion**®.

The information in this document is subject to change without notice.

#### **MAKING COPIES OF THIS MANUAL**

This manual contains information protected by law. All rights reserved. Duplicating this information in mechanical, electronic, or any other form, without the written approval by the manufacturer, is prohibited by copyright law.

## Contents:

Making Copies of This Manual .....	ii
<u>SAFETY AND PRECAUTIONS .....</u>	<u>1</u>
Operating Safety .....	1
Repair .....	2
Notes for Service Engineers .....	2
Point of use .....	3
Environmental conditions .....	3
Connecting .....	4
Standards/Electro-Magnetic Compatibility .....	5
Precautions .....	6
Important Additional Safety Instructions .....	6
FCC Compliance Statement .....	7
Declaration of Conformity .....	8
<u>INTRODUCTION .....</u>	<u>9</u>
Notes on these instructions .....	9
Our Target Group .....	9
Quality .....	9
Service .....	9
Included Equipment .....	10
Performance Characteristics .....	10
<u>START-UP .....</u>	<u>11</u>
Preparations on Your Computer .....	11
Supported Monitor Settings .....	11
Display Properties .....	12
Fixing the Monitor base .....	14
❶ Connecting Audio Cable (optional) .....	14
❷ Connecting VGA Signal Cable .....	14
❸ Connecting the Power Supply .....	15
Setting the Monitor Position .....	15
Positioning of the Monitor .....	16
Your posture .....	16
Working Ergonomics .....	17
Controls .....	18

<u>SETTING THE LCD MONITOR.....</u>	<u>19</u>
OSD Menu (On screen display) .....	19
<u>SERVICE .....</u>	<u>21</u>
Troubleshooting .....	21
Finding the problem .....	21
Troubleshooting.....	21
Do you require additional Support ? .....	22
<u>SPECIFICATIONS.....</u>	<u>23</u>
Warranty .....	24
Limitation of Warranty .....	24
Limits of Liability .....	24
Local Law .....	24

## SAFETY AND PRECAUTIONS

---

Please read through this section carefully and follow the instructions given. In this way you will guarantee reliable operation and a long life for your LCD monitor. Always keep these instructions handy and close by your LCD monitor. Keep the instructions and the packaging so that if you sell or give away your LCD monitor you can give them to the new owner.

### OPERATING SAFETY



- **Never open the housing** of the LCD monitor/power supply! When the housing is open there is a **danger of injury** from electric shock!

- Do not insert **any objects** through the slots and openings **into the inside of the LCD**. This may lead to an electrical short-circuit or even fire resulting in damage to your LCD monitor.



- Slots and openings in the LCD monitor are for ventilation purpose. **Do not cover these openings**, as otherwise this may lead to overheating.
- Do not allow **children** to play **unattended** on electrical equipment. Children may not always correctly recognize danger.
- This LCD monitor is intended for personal use only. It **not** intended for commercial use in **a heavy industry environment**.
- An **injury hazard** exists when the **display breaks**. Wear protective gloves to pack the broken parts and send them into your service center for proper **disposal**. Then wash your hands with soap, because it is possible for **chemicals** to escape.

- Never exert pressure on the display. This could break the monitor.
- Do not touch the display with your fingers or with sharp objects to avoid damage.

Please proceed as outlined in the "Customer Service" section:

- ◆ if the power cable/power supply overheats or is damaged
- ◆ if liquid has gotten into the monitor
- ◆ if the LCD monitor is dropped or the housing damaged

## REPAIR

- Leave all repairs of your LCD monitor to **authorized and qualified personnel** only.
- Should a repair be necessary, please contact one of our authorized **service partners** only.

## NOTES FOR SERVICE ENGINEERS

- Before opening the housing, **disconnect the monitor from all power sources and remove any connecting cables**. If the monitor has not been disconnected from the power outlet before being opened, there is a **danger to life** through electric shock. There is also a risk of damage to the components.
- Internal components of the LCD monitor may be damaged by **electrostatic discharge (ESD)**. Carry out system upgrades and changes in an **ESD-protected workshop**. If no such workshop is available, wear an **antistatic wrist strap** or touch a highly conductive metal object. We can repair damage sustained by inappropriate handling for a fee.
- Use only **original spare parts**.

## POINT OF USE

- Keep your LCD monitor and all units connected to it away from **moisture** and avoid **dust, heat** and **direct sunlight**. Failure to observe these instructions can lead to malfunctions or damage to the LCD monitor.
- Place and operate all units on a **stable, level** and **vibration-free surface** in order to avoid the LCD monitor from falling.
- **Avoid dazzle, reflections, extreme light/dark contrast** in order to save your eyes and ensure a pleasant, ergonomic work station.
- Take **regulator breaks** when working with your LCD monitor in order to avoid tension and fatigue.

## ENVIRONMENTAL CONDITIONS

- The LCD monitor can be operated at an ambient temperatures of between **+41°F** and **+95°F** (5° C to 35° C) and at a relative humidity of between 10% and 80% (without condensation).
- When switched off, the monitor can be stored at between **-4°F** and **+140°F** (-20° C - +60° C), up to the maximum height of 39,000 ft (12,000 m) above sea level at a relative humidity of between 10% and 85% (without condensation).
- After transporting your LCD monitor please wait until it has assumed the ambient temperature before connecting and switching it on. Extremely high variations in the **temperature or humidity** may result in condensation forming on the inside of the LCD monitor which could cause an **electrical short-circuit**.

## CONNECTING

Observe the following instructions to connect your LCD monitor properly:

### POWER SUPPLY



- Do not open the housing of the mains (power supply). An open housing presents a **lethal hazard** from electrical shock. There are no parts inside to be cleaned or serviced.
- Operate your LCD monitor mains (power supply) only on grounded sockets with **AC 100-240V~/ 50-60 Hz**. If you are not sure about the power supply at your location, check with your power company. (Mains/Power Supply = Hua Jung Comp. Co., HASU05K)
- Use only the mains (power supply) and power connection cable **provided**.
- For additional safety we recommend use of **an excessive voltage protection device** to protect your LCD monitor from damage resulting from **voltage surges** or **lightning**.
- To interrupt the LCD monitor from mains (power supply) disconnect the plug from the socket.
- The power **socket** must be in the vicinity of your LCD monitor and within reach of the power cables. **DO NOT stretch the power cables tightly to reach a power socket**.
- If you use an **extension cable**, ensure that it fulfills the **VDE requirements**. Please ask your electrician.
- You should lay the LCD Monitor cables in a manner that no one can trip or step on it.
- To avoid damage of cable **do not place any objects or furniture on the cable**.
- You can adjust your LCD monitor a **maximum of about 3° downward** and a **maximal 20° upward** (see page 15). If you attempt to go beyond these points with force, the **danger of damage** exists.



## STANDARDS/ELECTRO-MAGNETIC COMPATIBILITY

Your monitor fulfils the requirements for electro-magnetic compatibility and electrical safety specified in the following standards:

**EN 55022, EN 55024, EN 60950, EN 61000-3-2, EN 61000-3-3  
UL60950 / CAN CSA 22.2 No 60950, FCC**

- When connecting ensure that *Guidelines for Electro-Magnetic Compatibility (EMC)* are observed.
- Provide an interval of at least one meter from **high-frequency and magnetic sources of interference** (television sets, loudspeakers, mobile telephones, etc.) in order to avoid malfunctions and data loss.

## ERGONOMICS

- This monitor complies with all relevant regulations such as DIN EN ISO 9241-3, DIN EN ISO 9241-7 and DIN EN ISO 9241-8.
- For ergonomic reasons we suggest not to use the base-color blue on dark subfonds. This would cause bad readability and would increase eye strain.
- While working with screens you should **take breaks periodically** to avoid tension and fatigue.
- In order to save your eyes and to assure a convenient working area you should **avoid glare, reflections** and **strong contrasts** on the screen. For more detailed information on workplace ergonomics, see page 17.

## ELECTRICAL SAFETY

**EN 60950** Safety of information technology equipment.

- The connection of devices is limited to equipment that complies with EN60950 "Safety of information technology equipment" or EN60065 "Audio, video and similar electronic apparatus. Safety requirements"
- For U.S. / Canadian purposes:  
The PC should only be connected to equipment which complies with UL 60950 / CAN CSA 22.2 No 60950

## TRANSPORT AND RECYCLING

- Keep the original packaging and use it to protect the LCD monitor during transport or storage.
- Packing materials and product are recyclable.

## PRECAUTIONS

⇒ **Caution!** There are **no parts which can be serviced** or cleaned inside of the monitor housing.

You can increase the service life of your LCD monitor by taking the following precautions:

- Before cleaning **always disconnect the power line** and all connection cables.
- Do **not use any solvents**, caustic or gaseous cleaning agents.
- Clean the display with a soft, lint-free cloth.
- Ensure that no water droplets remain on the screen. Water can cause **permanent discoloration**.
- Do not expose the screen to **bright sunlight** or **ultra-violet radiation**.

## IMPORTANT ADDITIONAL SAFETY INSTRUCTIONS

When using any electronic equipment, basic safety precautions should always be taken. Following the guidelines below can reduce the risk of fire, electric shock and injury to person:

- Do not use this product near water (e.g., near a bathtub, wash bowl, kitchen sink or laundry tub, in a wet basement or near a swimming pool).
- Avoid using a telephone/modem (other than a cordless type) during an electrical storm. There may be a remote risk of electric shock from lightning.
- Do not use the telephone/modem to report a gas leak in the vicinity of the leak.
- Use only the power cord indicated in this manual. Do not dispose of batteries in a fire. They may explode. Check with local codes for possible special disposal instructions.
- Keep batteries away from children at all times.

## **FCC COMPLIANCE STATEMENT**

This equipment has been tested and found to comply with the limits for a Class B digital device, pursuant to Part 15 of FCC Rules. These limits are designed to provide reasonable protection against harmful interference in a residential installation. This equipment generates, uses, and can radiate radio frequency energy and, if not installed and used in accordance with the instructions, may cause harmful interference to radio communications. However, there is no guarantee that interference will not occur in a particular installation. If this equipment does cause harmful interference to radio or television reception, which can be determined by turning the equipment off and on, the user is encouraged to try to correct the interference by one or more of the following measures:

- Reorient or relocate the receiving antenna.
- Increase the separation between the equipment and receiver.
- Connect the equipment into an outlet on a circuit different from that to which the receiver is connected.
- Consult the dealer or an experienced technician for help.

Changes or modifications not expressly approved by the party responsible for compliance could void the user's authority to operate the equipment. Shielded interface cables, if any, must be used in order to comply with the emission limits.

## DECLARATION OF CONFORMITY

### According to 47CFR, Parts 2 and 15 for Class B Personal Computers:

We: **Medion Aktiengesellschaft**  
(Name of the Responsible Party)

Located at: **Gänsemarkt 16 - 18**  
**D-45127 Essen**  
**Germany**  
(Address, City, State, Zip Code)

**Fax : 0 201 / 81 081 - 227**  
(Facsimile Number **for conformity issues only**)

Declare under sole responsibility that the product identified herein, complies with 47CFR Parts 2 and 15 of the FCC rules as a Class B digital device. Each product marketed, is identical to the representative unit tested and found to be compliant with the standards. Records maintained continue to reflect the equipment being produced can be expected to be within the variation accepted, due to quantity production and testing on a statistical basis as required by 47CFR §2.909. Operation is subject to the following two conditions: (1) This device may not cause harmful interference, and (2) This device must accept any interference received, including interference that may cause undesired operation. The above named party is responsible for ensuring that the equipment complies with the standards of 47CFR §§15.101 to 15.109.

Trade Name: **Medion**

Type or  
Model Number: **MD 6155 AN**

Party Responsible: **MEDION AG**

Executed on (Date), at (Place): **17th of December 2002, Essen**

## INTRODUCTION

---

### **NOTES ON THESE INSTRUCTIONS**

We have arranged these instructions so that you can quickly find the subject related information in the table of contents. The purpose of these instructions is helping you operate your LCD display safely, quickly and easily.

### **OUR TARGET GROUP**

Thank you for purchasing our LCD display. We thank you for your confidence in our products and are pleased to greet you as a new customer. These instructions are intended for initial users as well as advanced users. Regardless of the possible professional utilization, this display is intended for private use only.

### **QUALITY**

We focused on great features, ease of use and reliability in manufacturing your LCD monitor. The balanced hardware and software concept offers you an advanced display design which will provide you a great deal of pleasure for your work and entertainment.

### **SERVICE**

Service and support will be available every time you use your new LCD Display. Contact us, we will be glad to help. This manual contains a separate chapter on the subject of service beginning on page 21.

## **INCLUDED EQUIPMENT**

Please check your new LCD Display for completeness. Notify us within 14 days after purchase if it is not complete. With your LCD monitor you receive:

- 1- LCD monitor
- 1- Connection cable
- 1- Mains Power pack
- 1- Mains power cable
- 1- Operating instructions
- 1- Guarantee card
- 1- Audio cable (optional)

## **PERFORMANCE CHARACTERISTICS**

### **Advantages in relation to cathode ray tubes**

- Less space required
- Lower weight
- Power savings

### **High image quality**

- SXGA standard: resolution up to 1280 x 1024
- Full image for all resolutions
- Over 16 million colors (simulated)

### **Further features**

- The LCD monitor is a plug and play device which is automatically recognized by your operating system.
- The power management fulfills the VESA DPMS standard. During idle times (OFF mode) the power consumption is automatically reduced by up to 95 %.

## START-UP

---

➤ Before start-up always read the Chapter "**Safety and Precautions**" on page 1ff.

### PREPARATIONS ON YOUR COMPUTER

If you have operated your computer previously with a CRT monitor, it will be necessary for you to make a few preparations. This is required when your previous monitor was operated with settings which are not supported by your new LCD monitor.

### SUPPORTED MONITOR SETTINGS

Resolution			Analog		
			Horizontal Frequency	Vertical Frequency	
VESA	VGA	640 x 480	31.5 KHz	60 Hz	
			37.5 KHz	75 Hz	
			37.8 KHz	72.8 Hz	
			720 x 400	31.5 KHz	70.1 Hz
	SVGA	800 x 600	35.2 KHz	56.3 Hz	
			37.9 KHz	60.3 Hz	
			46.9 KHz	75.0 Hz	
			48.1 KHz	72.0 Hz	
	XGA	1024 x 768	48.4 KHz	60.0 Hz	
			56.5 KHz	70.1 Hz	
			60.0 KHz	75.0 Hz	
	SXGA	1280 x 1024	63.98 KHz	60.02 Hz	
79.97 KHz			75.02 Hz		
Macintosh	VGA	640 x 480	35.0 KHz	66.7 Hz	
		832 x 624	49.7 KHz	74.6 Hz	
MS-DOS		640 x 350	31.5 KHz	70.1 Hz	

## DISPLAY PROPERTIES

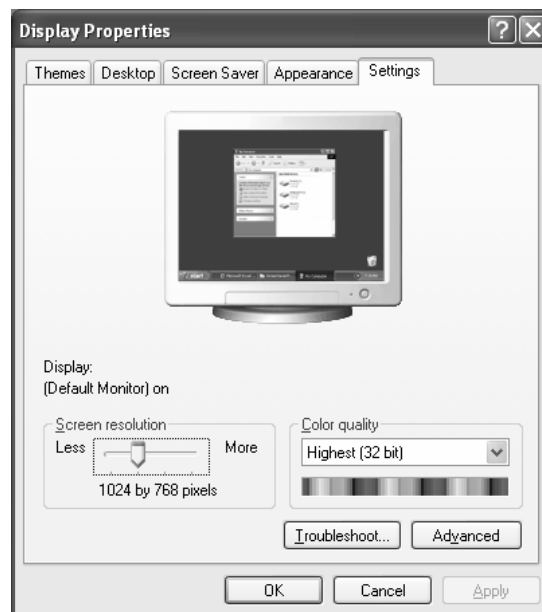
This Windows program offers you the possibility of adapting the display to your monitor. This includes items such as the background image, the screen saver, the Active Desktop (Web) as well as other settings for your monitor and video card.

The program can be started as follows:

- Right mouse click on Windows desk top and left mouse click on "**Properties**".

Or

- Start the "**Display**" program in "**System control**".



(Diagram the same)

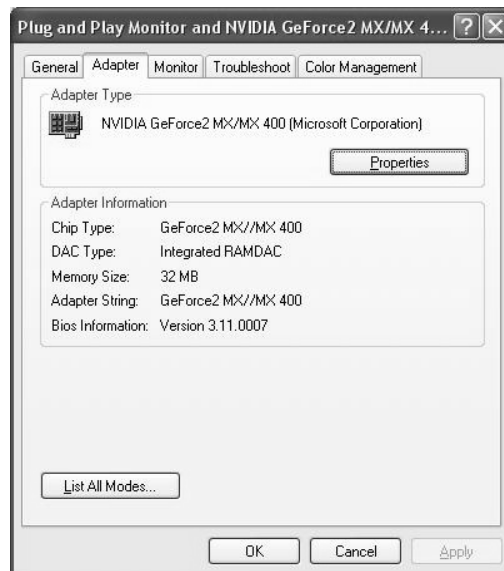
Then click "**Color quality**" to set the color depth (number of colors displayed). Your monitor supports a maximum color depth of 16 million colors corresponding to 32 bit or "True Color".



The resolution can be set under "**Screen resolution**". Your monitor can display a maximum of 1280 x 1024 image dots.

The image repeat frequency can be set under "**Advanced**". A window with the characteristics of your video card appears depending on the configuration of your computer.

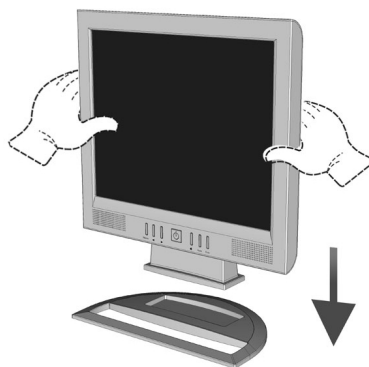
Under "**Adapter**" you can change the desired value in the selection field "**List All Modes...**".



(Diagram the same)

⇒ **Caution!** If your setting does not coincide with the values supported by your display, you may not see any image. The value for the LCD should be 60 Hz and, depending on the setting, not exceed 75 Hz.

## FIXING THE MONITOR BASE



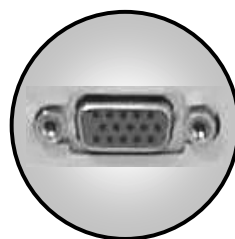
(Diagram the same)

### ❶ CONNECTING AUDIO CABLE (OPTIONAL)

1. Plug the audio cable into the matching sockets on the computer and on the monitor.

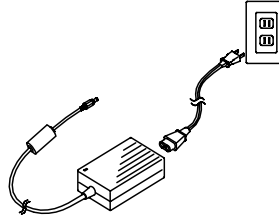
### ❷ CONNECTING VGA SIGNAL CABLE

2. Ensure that the LCD monitor is not yet connected to the line power (power cord not yet plugged in) and neither the LCD monitor nor the computer is switched on.
3. Prepare your computer for the LCD monitor if necessary (see previous pages) with the correct settings for your LCD.
4. Plug the signal cable into the matching VGA sockets on the computer.

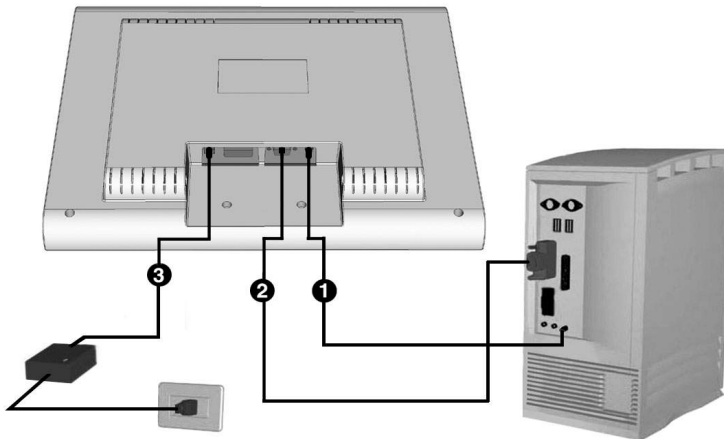


### ③ CONNECTING THE POWER SUPPLY

5. Connect the line power cable to the power pack and plug the plug into a socket in the vicinity of the LCD.



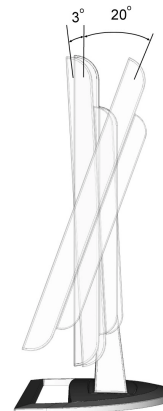
6. Plug the power supply cable from the power pack into the power supply socket on the LCD monitor.



7. Switch on your display monitor with the ON/OFF switch (see page 18).
8. Then switch on your computer.

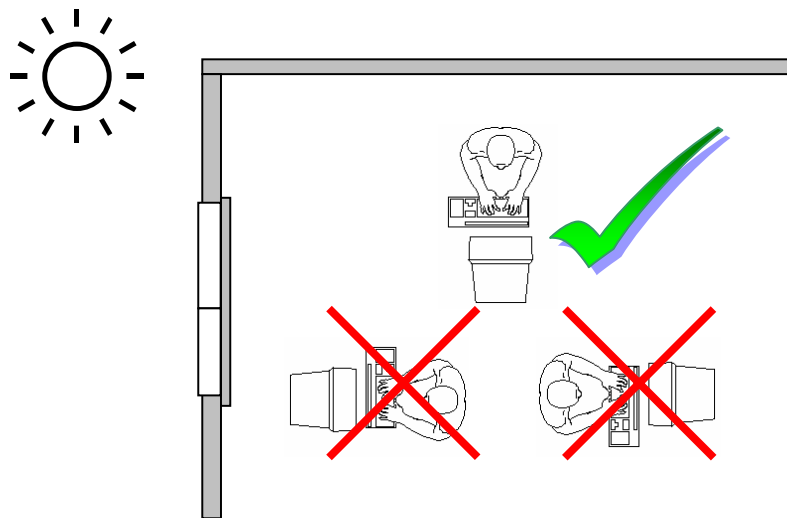
### SETTING THE MONITOR POSITION

Position the LCD monitor according to your working environment. You can adjust the monitor **upward to 20°** and **downward to 3°**.



## POSITIONING OF THE MONITOR

Please ensure that the monitor is set up in such a way that that reflections, glare and light-dark contrast are avoided (as this will make the screen less attractive to look at).



## YOUR POSTURE

Sitting in one position for long periods can be uncomfortable. To minimize the potential for physical discomfort or injury, it's important that you maintain proper posture.

**Back** - While sitting at your work surface, make sure your back is supported by the chair's backrest in an erect position or angled slightly backwards.

**Arms** - Your arms should be relaxed and loose, elbows close to your sides, with forearms and hands approximately parallel to the floor.

**Wrists** - Your wrists should be as straight as possible while using the keyboard, mouse or trackball. They should not be bent sideways, or more than 10 degrees up or down.

**Head** - Your head should be upright or tilted slightly forward. Avoid working with your head or trunk twisted.

**Legs** - Your thighs should be horizontal or angled slightly downward. Your lower legs should be near a right angle to your thighs. Your feet should rest flat on the floor. If necessary, use a footrest, but double check that you have your seat height adjusted correctly before getting a footrest.

**Overall** - Change your position frequently and take regular breaks to avoid fatigue.

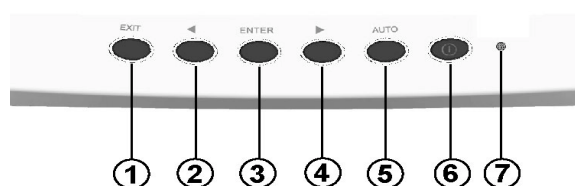
### **WORKING ERGONOMICS**



- Hand's support rest: 2" - 4"
- Top line of screen should keep eye's level or be a little beneath
- Eye's distance to screen: 20" - 28"
- Legroom (vertical): at least 26"
- Legroom (horizontal): at least 24"

The illustration above should give you a guideline for an ergonomic workplace.

## CONTROLS

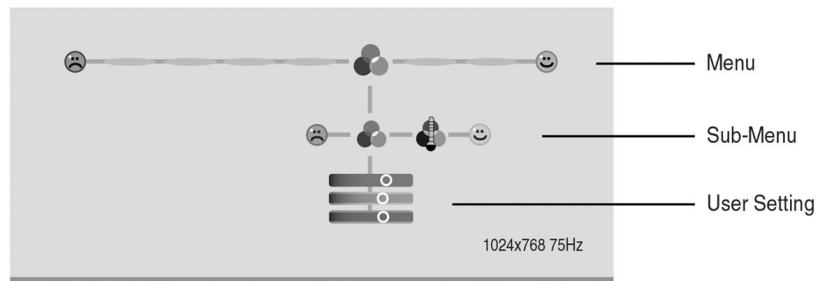


- (1) **Enter**  
When this key is pressed the OSD (ON screen display) starts on your LCD monitor.
- (2) **◀ Function selection key**  
With this key you can select the parameter whose value you want to change.
- (3) **▶ Function selection key**  
With this key you can select the parameter whose value you want to change.
- (4) **ON/OFF switch & Operation indicator**  
With this switch you can switch the LCD monitor ON and OFF.  
Indicates the operating state.
- (5) **Auto**  
With this key you can automatically adjust the image.
- (6) **🔊**  
With this key you can switch the internal speakers off.
- (7) **Exit OSD**

## SETTING THE LCD MONITOR

You can set certain parameters for the LCD monitor on the OSD menu (ON screen display).

### OSD MENU (ON SCREEN DISPLAY)



Press **menu** (see (1), page 18) to activate the OSD.

1. Select the options from the main menu with the ◀ or ▶ **function selection keys**.
2. Press **menu** to activate the sub-menu.
3. Select the options from the sub-menu with the ◀ or ▶ **function selection keys**.
4. Press **menu** to start the adjustment possibility.
5. Set the desired value with the ◀ or ▶ **function selection keys**.
6. Press **exit** to deactivate OSD.

The main functions and adjustment possibilities using the OSD are explained on the next pages.

⇒ **Caution!** The setting possibilities for the LCD monitor lead only to marginal changes due to this technology.

Main Menu	Sub-Menu	Function
		All reset
		Auto Adjust
		Reset Color
		Reset OSD
		Mute
		Volume
		Brightness
		Contrast
		RGB Adjust
		Color Temperature
		Clock Adjust
		Phase Adjust
		H-Position
		V-Position
		OSD Time Out
		OSD Position
		Accept and Exit
		Reject and Exit



## SERVICE

---

### TROUBLESHOOTING

If your LCD monitor should have problems please check if it is properly installed and plugged according to the information given in the "Start-Up" section beginning on page 11. If the problems cannot be solved, read the following chapter for possible solution.

#### FINDING THE PROBLEM

Many times, problems have simple causes. We would like to give you some tips to solve some common problems. Should these tips not help, please call us!

#### CHECK CONNECTIONS AND CABLES

Start by carefully checking all cable connections visually. If the indicator lamps do not function, ensure that the LCD monitor and computer are properly connected to the line power.

### TROUBLESHOOTING

#### No display on screen:

Check:

- Image refresh frequency.  
The current image refresh frequency must be suitable for the LCD monitor.
- Power saving mode. Press any desired key and move the mouse to deactivate the mode.
- Signal cable pins. If pins are bent, please contact your service dealer.
- Set the appropriate values for your LCD monitor (see "**Preparations on your computer**", page 11).

#### Characters displayed dark, picture too small, too large or not centered, etc.:

- Readjust the corresponding settings.  
(Setting LCD monitor, page 19)

**Picture runs or not stable:**

- Signal cable pins. If pins are bent, please contact your service dealer.
- Video card. Check whether the settings are correct.
- Image refresh frequencies. Select permissible values for your graphic settings.
- Remove any interfering equipment (portable telephones, loudspeakers, etc.) from the vicinity of your LCD monitor.
- Avoid using monitor extension cables.

**Colors not displayed cleanly:**

- Check the signal cable pins. If pins are bent, please contact your service dealer.
- Readjust the corresponding settings.
- Avoid using monitor extension cables.

**DO YOU REQUIRE ADDITIONAL SUPPORT?**

If the suggestions in the above section have not solved your problem, please contact the hotline. We will try and help you over the telephone. However, before you contact your Technology Center, please keep the following information available:

- How is your computer configured?
- What additional peripherals do you use?
- What messages, if any, appear on your screen?
- What software were you using when the error occurred?
- What steps have you already undertaken to solve the problem?
- If you have already been given a customer number, please keep this available.

## SPECIFICATIONS

Visible display size	17", TFT	
<b>LCD-Monitor:</b>		
Input voltage	DC 19 V max. 2.5 A	
Power consumption	max. 47.5 Watt	
<b>Power Supply</b>	IN: (Hua Jung Comp. HASU05K)	
Voltage	AC 100 – AC 240 V ~	
Current	max. 1.8 A	
Frequency	50 – 60 Hz	
	Out:	
Voltage	DC 19 V	
Current	max. 2.5 A	
Resolution	max. 1280 x 1024	
Refresh rate	max. 75 Hz	
Video input	15-wired SUB-D connector	
User control	ON/OFF, OSD	
Dimensions (W x H x D)	16.14" x 16.85" x 9.06" 410 mm x 428 mm x 230 mm	
Ambient Temperature	Operating	+41°F ~ +95°F +5°C ~ +35°C
	Storage	-4°F ~ +140°F -20° C ~ +60°C
Humidity	Operating	10% ~ 80%
	Storage	10% ~ 85%
Speakers (optional)	2 x 1 Watt	

## **WARRANTY**

PLEASE READ THIS LIMITED WARRANTY CAREFULLY TO UNDERSTAND YOUR RIGHTS AND OBLIGATIONS.

The receipt is considered valid proof of purchase and should be kept in a safe place. This receipt will be required for receiving any warranty service. This warranty is transferable. When transferring ownership to a third party, please provide the receipt and warranty information.

We warrant to the end user that each product, including related software, accessories, media and supplies, shall be free from defects in materials and workmanship for the warranty time from date of purchase. This warranty covers only those defects that arise as a result of normal use of the product. This warranty does not cover any other problems, including problems that arise as a result of improper maintenance or modification; software, accessories, media or supplies not provided or supported by us; or operation outside the manufacturer's specifications.

Any parts in this monitor repaired or exchanged by a valid service representative will be covered under the original warranty period. Products shipped without accessories will be returned without accessories. Any replacement product or component may be either new or like new, provided that its functionality is at least equal to that of the product being replaced.

The TFT display technology is highly superior to the traditional DSTN technology. More than 2 million color dots are controlled individually by transistors. Despite of state-of-the-art assembly methods we cannot eliminate scattered defective color dots causing display errors in range of micro meters. These so called pixel errors constitute at a rate up to 0.0005 % neither a reduction of usability nor a claim of warranty (see regional court of appeal Cologne [OLG Köln] 1993, AZ 19 U 92/91: CR1993,208 and OLG Cologne 1994, AZ 19 U 183/93: NJW RR 1994, 1077).

### **LIMITATION OF WARRANTY**

To the extent allowed by local law, no other warranties or are made with respect to this device or the warranty services by any person, including but not limited to us and our suppliers. The express warranty stated above is the only express warranty made to you and is provided in lieu of all other express or implied warranties and conditions (if any) including any created by any other documentation or packaging. For additional warranty information, please refer to enclosed warranty card.

### **LIMITS OF LIABILITY**

To the extent allowed by local law, except for the obligations specifically set forth in this warranty statement, in no event shall we or our third party suppliers be liable for direct, indirect, special, incidental, or consequential damage, whether based on contract or any other legal theory and whether advised of the possibility of such damages. This includes loss or damage of personal data on your PC.

### **LOCAL LAW**

This warranty statement gives you legal rights. You may also have other rights which vary from jurisdiction to jurisdiction. To the extent this warranty statement is inconsistent with local law, certain disclaimers and limitations of this statement may not apply to the customer.