

# Notes on This Manual

Keep these instructions with your computer at all times. The proper set up, use and care can help extend the life of your computer. In the event that you transfer ownership of this computer, please provide these instructions to the new owner.

This manual is divided into sections to help you find the information you require. Along with the **Table of Contents**, an **Index** has been provided to help you locate information.

In addition, many application programs include extensive help functions. As a general rule, you can access help functions by pressing F1 on the keyboard. These help functions are available to you when you use the Microsoft Windows® operating system or the various application programs.

This interactive manual is designed to provide additional information about your Notebook as well as useful links accessible via the World Wide Web.

We have listed further useful sources of information starting on page 62.

## Document Your Notebook

It is important to document the details of your Notebook purchase in the event you need warranty service. The serial number can be found on the back of the Notebook:

Serial Number .....  
Date of Purchase .....  
Place of Purchase .....

## Audience

These instructions are intended for both the novice and advanced user. Regardless of the possible professional utilization, this Notebook is designed for day-to-day household use. The functions and applications for use with this Notebook have been designed with the entire family in mind.

# Quality

We have selected the components in this computer for their high level of functionality, ease of use, safety and reliability.

Through balanced hardware and software design we are able to provide you with an innovative personal computer useful for applications relating to both work and leisure.

We are pleased to welcome you as our newest customer.

## Copying this manual

This document contains legally protected information. All rights reserved. Copying in mechanical, electronic and any other form without the written approval of the manufacturer is prohibited.

Copyright© 2010 MEDION®

All rights reserved. Microsoft®, MS-DOS®, and Windows are registered trademarks of Microsoft Corporation in the U.S. and other countries.

Pentium® is a registered trademark of Intel Corporation.



HDMI, the HDMI Logo and High-Definition Multimedia Interface are registered trademarks of **HDMI Licensing LLC**.

The names of actual companies and products mentioned herein may be the trademarks of their respective owners.

Information in this document is subject to change without notice.

**Table of Contents:**

- Safety and Maintenance..... 1**
  - Safety Instructions ..... 3
  - Data Security.....4
  - Set-Up Location.....4
  - Ambient Temperature .....5
  - Working in Comfort .....6
  - Connecting .....7
    - Power supply.....7
    - Cabling.....8
  - Information about the regulatory compliance according to R&TTE .....9
  - Touch Pad .....9
  - Battery Operation..... 10
- Views & Handling ..... 11**
  - Included with Your Notebook ..... 13
  - Views ..... 14
    - Open Notebook ..... 14
    - Front View.....15
    - Left Side .....15
    - Right Side.....16
    - Device Indicators..... 17
  - Getting Started..... 18
    - How to start: ..... 18
      - Step 1 .....18
      - Step 2 .....20
      - Step 3 .....20
    - Short Description of the Windows' Desktop .....21
- Main Components ..... 25**
  - Power Supply .....27
    - On/Off Button.....27
    - Power Adapter .....28
    - Battery Operation.....29
      - Inserting the Battery .....29
      - Removing the Battery .....30
      - Charging the Battery.....31
      - Discharging the battery .....31
      - Battery Performance .....31
  - Power Management..... 33
    - Sleep Mode .....33
    - Hibernate Mode.....33
  - ECO Function.....33
    - Switching the ECO function on /off .....33
    - Making settings .....34

Display .....	35
Opening and Closing the Display.....	35
Screen Resolution.....	35
Appearance and Personalization .....	36
Connecting an External Monitor .....	37
Duplicate the Desktop .....	39
Extend the Desktop.....	39
Only display the Desktop on 1 .....	39
Only display the Desktop on 2.....	39
Data Entry .....	40
The Keyboard.....	40
Notebook-Specific Key Combinations .....	40
Programming the user-defined P1 key.....	42
Changing the use of the key .....	42
Touch Pad .....	43
Two-Finger Gesture.....	44
The Hard Drive .....	45
Important Directories .....	46
The Optical Drive .....	47
Loading a Disc.....	47
Emergency Ejection of a Blocked Disc.....	48
Playing Back and Retrieving Data from Discs .....	49
Regional Playback Information for DVD.....	49
Subjects Concerning the CD/DVD-Rewriter.....	50
Recordable/Rewritable Discs .....	50
The Sound Card .....	51
External Audio Ports .....	52
Setting the Recording Level.....	53
Dolby Advanced Audio.....	53
The Network .....	54
What is a network?.....	54
Ethernet-Network .....	54
Wireless LAN .....	55
Conditions.....	56
Troubleshooting within the Network.....	57
The Multimedia Card Reader .....	58
Inserting Memory Cards.....	58
Removing Memory Cards.....	58
Webcam.....	59
Actual example using Windows Messenger.....	59
Universal Serial Bus (USB) Port.....	60
eSATA/USB Port.....	61
Remove S-ATA Devices.....	61
Securing the Notebook .....	62
Startup Password .....	62
Using a safety lock.....	62

Software.....	63
Getting to Know Windows® 7.....	63
Windows® 7 - News .....	63
Windows® 7 - Help and Support.....	65
Windows® 7 – Getting Started .....	66
Windows® 7 - User Account Control .....	67
Windows® 7 – Control Panel.....	68
Windows Media Center.....	69
Installation of Software.....	72
How to Install your Software .....	72
Software Uninstallation.....	73
Windows Activation .....	74
Product activation on your Notebook .....	74
The BIOS Set-up-Program.....	75
Running the BIOS Set-up .....	75
BullGuard Internet Security .....	76
<b>First Aid .....</b>	<b>79</b>
Data and System Security .....	81
Data Security.....	81
Maintenance Programs .....	81
System Restore .....	82
Correction .....	82
Windows® Update .....	83
Windows Update Information for Data Security .....	84
System Restore .....	85
Limits of the Recovery .....	85
Carrying out a Restore.....	86
FAQ – Frequently Asked Questions.....	87
Customer Service .....	88
Localize the Cause.....	88
Check Cables and Connections .....	88
Errors and Possible Causes .....	89
Additional Support.....	90
Driver Support.....	90
Transporting the Notebook.....	91
Maintenance .....	92
Care of the TFT Display .....	92
Upgrades and Repairs.....	93
Notes for Service Engineers.....	93
Recycling and Disposal.....	94
Batteries and Proper Treatment.....	95

<b>Appendix .....</b>	<b>97</b>
Information about Conformity .....	99
ISO 13406-2 Class II .....	99
FCC Compliance Statement .....	101
Index.....	102

# Chapter 1

## Safety and Maintenance

Subject	Page
Safety Instructions .....	3
Data Security.....	4
Set-up Location .....	4
Ambient Temperature .....	5
Working in Comfort .....	6
Connecting .....	7
Information about the regulatory compliance according to R&TTE .....	9
Touch Pad .....	9
Battery Operation.....	10





# Safety Instructions

Please follow the instructions in this section for the safe operation of your notebook:

- Do not allow small children to play unattended with electrical equipment. Children are incapable of judging potential risks properly.
- Keep the packing materials, such as plastic sheet away from children. The danger of suffocation could arise in the case of misuse.
- Do not open the case of the notebook, the battery or the power adaptor. When the case is open there is a danger of severe electric shock.
- CD-ROM-/CDRW-/DVD-drives are Laser Class 1 devices. These lasers must remain in their sealed casing. DO NOT remove the drive covers, as exposure to the lasers may be harmful.
- Do not insert objects through the slots and openings of the notebook. This may lead to electric shock, electrical short-circuit or fire that will damage your notebook.
- Slots and openings in the notebook serve to ventilate it. Do not cover up these openings, because the notebook could overheat.
- The notebook is not intended to be operated in a heavy industry company. Operation under extreme environmental conditions can result in damage to your notebook.
- Do not operate the notebook during a thunderstorm, in order to avoid damage through lightning strike.
- Never place objects on top of the notebook that would exert any pressure on the display. There is a danger that even slight pressure may break the TFT display.
- There is a risk of injury if the TFT display breaks. Use protective gloves to pack up the broken pieces and contact customer service to arrange for proper disposal. It is important to thoroughly wash your hands after handling a broken TFT display. There is a chance that chemicals may have been released.
- To avoid damage to the TFT Display, never open it more than 120°. Do not forcibly open it.
- In order to avoid damage to the display, do not touch it with your fingers or sharp objects.
- Never lift the notebook by the TFT Display; doing so could break the hinges.

**Switch off your Notebook immediately** or do not switch it on at all and contact customer service ...

- ... if the power cord or the connectors attached to it are burnt or damaged. Replace the defective power cord with an original power cord. Under no circumstances may a defective power cord be repaired.
- ... if the housing of the Notebook is damaged or fluids have leaked into it. Have the Notebook checked by customer service first, because the Notebook may not be safely operated otherwise and there may be a life-threatening risk of electrocution!

## Data Security

### Attention!

Every time you update your data make back-up copies on an external storage medium. The supplier does not assume liability for data loss or damage to data storage units, and no claims can be accepted for damages resulting from the loss of data or consequential losses.

## Set-Up Location

- Keep your notebook and all connected peripherals away from moisture, dust, heat and direct sunlight. Failure to do so can lead to Notebook malfunction or damage.
- It is highly recommended you do not use the notebook outdoors.
- Operate the notebook and all peripherals on a stable, balanced and vibration-free surface.
- Do not leave the base of your notebook on your lap or any part of your body for a long period of time. The notebook can become very warm while it is turned on or charging and can cause discomfort or injury from heat exposure.
- In the first hours of operation, new devices may emit a typical, unavoidable but completely harmless smell, which will decline increasingly in the course of time. We recommend that you ventilate the room regularly, in order to counteract the formation of the smell. During the development of this product, we have made sure that the applicable limits are clearly lowered.

## Ambient Temperature

- The notebook is most reliably operated at an ambient temperature between +41° (5° C) and +86° F (30° C) and at a relative humidity between 20% and 70% (without condensation).
- When powered off, the notebook can be stored at temperatures between 32° and 140° F (0° and 60° C).
- Unplug the cable during thunderstorms and make especially sure to remove the antenna cables, if present. We recommend the use of a surge protector for additional safety, in order to protect your notebook from being damaged by power peaks or lightning strikes through the power network.
- Wait until the notebook has reached ambient (room) temperature before turning it on or connecting it to the power adapter. Drastic variations in temperature and humidity can create condensation within the Notebook and may cause it to short-circuit.
- For transporting the notebook keep the original packing.

## Working in Comfort



Sitting in one position for long periods can be uncomfortable. To minimize the potential for physical discomfort or injury, it's important that you maintain proper posture.

- **Back** – While sitting at your work surface, make sure your back is supported by the chair's backrest in an erect position or angled slightly backwards.
- **Arms** – Your arms should be relaxed and loose, elbows close to your sides, with forearms and hands approximately parallel to the floor.
- **Wrists** – Your wrists should be as straight as possible while using the keyboard, mouse or trackball. They should not be bent sideways, or more than 10 degrees up or down.
- **Legs** – Your thighs should be horizontal or angled slightly downward. Your lower legs should be near a right angle to your thighs. Your feet should rest flat on the floor. If necessary, use a footrest, but double check that you have your seat height adjusted correctly before getting a footrest.
- **Head** – Your head should be upright or tilted slightly forward. Avoid working with your head or trunk twisted.
- **Overall** – Change your position frequently and take regular breaks to avoid fatigue.

# Connecting

Pay attention to the following information, in order to connect your notebook correctly:

## Power supply

- Do not open the power adapter housing. When the housing is open there is a danger of severe electric shock. It contains no user-serviceable parts.
- The electric outlet must be in the vicinity of the notebook and within reach of the power adapter cables.
- To disconnect your notebook from the power source, or set the notebook to battery operation, remove the power cord from the notebook's power socket.
- Only use the notebook with a power adaptor operating at AC 110-240V~/50-60 Hz. For details on power consumption, please refer to the rating plate on the rear of your notebook. If you are unsure of the type of power supply available at the point of use, ask your local power company.
- Use only the supplied power cord and power adapter.
- To provide additional protection against electric shock, power surges, lightning strikes, or other electrical damage to your notebook, we recommend the use of a surge protector.
- Firstly remove the plug, and then the connector of the notebook, from the power source, if you want to detach the network adapter from the mains power supply. A reverse sequence could damage the network adapter or the notebook. Always hold the connector firmly when removing it. Never pull on the power cord.

## Cabling

- Arrange cables so that no one can walk on or trip over them.
- Do not place objects on any of the cables.
- Do not allow any large forces to be exerted on the plug in connections. This could lead to internal or external damage to your device.
- Do not exert any force when connecting cables and plugs and pay attention to the correct orientation of each plug.
- Pull the connection at the plug, not at the cable, when you are detaching a connection cable from your device.
- Avoid short circuits and cable breaks by not squeezing the cable or bending it sharply.
- To avoid damage to your notebook, connect your peripherals (e.g. keyboard, mouse and monitor) whilst your notebook is powered off. Some devices can be connected whilst your notebook is in use. These devices usually have a USB connector. Please follow the appropriate instructions for each device.
- Keep the notebook at least one metre (approximately three feet) away from high frequency and magnetic interference sources (e.g. televisions, loudspeaker cabinets, mobile telephones, etc.) in order to avoid malfunctions and/or loss of data.
- Please note that only shielded cables shorter than 3 metres (9.84 ft) should be used for the LPT, COM, USB, IEEE 1394, audio, video and network interfaces with this notebook. When connecting a printer to your notebook, please only use a printer cable with double shielding.
- Only use power cables/connection cables supplied with the notebook and its devices as the cables have been extensively tested.
- It is recommended to disconnect any cables from your notebook that are not connected to a peripheral device or are not in use.
- Only devices complying with the following safety requirements should be connected to your notebook: "EN60960 Safety of information technology equipment" or "EN60065 Audio, video and similar electronic apparatus".

## Information about the regulatory compliance according to R&TTE

The following remote equipment has been supplied with this notebook:

- Wireless LAN

Due to the capacity of the built-in wireless LAN solution (> 100 mW) the device may only be used within buildings in France.

Currently none of the other EU-countries have any restrictions. For use in other countries please obtain information about the applicable regulations locally.

The company declares herewith that these devices are in agreement with the fundamental requirements and the other relevant terms of the 1999/5/EG Guideline. Complete declarations of conformity are available under [www.medion.com/conformity](http://www.medion.com/conformity).



### Touch Pad

- Light pressure with the tip of your finger is all that is required to operate the touch pad. Because the touch pad is electrostatic sensitive, objects cannot be used in place of your fingers. Using a pen or other object can damage the touch pad or cause the notebook to malfunction.

# Battery Operation

To extend the life and power of your battery and guarantee secure operation, the instructions below should be followed:

- Never expose the battery to direct sunlight or heat for long periods.
- Do not dispose of the battery by fire.
- Disregarding these instructions will lead to damage and under some circumstances may even cause the battery to explode.
- Do not open the battery housing; it contains no user-serviceable parts.
- Keep the battery away from electrically conductive materials, chemical substances and cleaning agents.
- Only use the originally supplied power adapter to charge the battery.
- Ensure (through the display or the signalling sound of the notebook) that the battery is completely discharged before recharging it.
- Replace the battery only with the same type or an equivalent type recommended by the manufacturer.
- Charge the battery only until the battery charging light goes out. Also, refer to the instructions under “Charging the Battery” on page 31 for instructions on checking the battery level.
- Only change the battery when the unit is switched off.
- Batteries are classified as special waste and should always be disposed of properly. Contact Customer Service for more details.



# Chapter 2

## Views & Handling

Subject	Page
Included with your notebook .....	13
Open notebook .....	14
Front view .....	15
Left side .....	15
Right side.....	16
Power and status indicators .....	17
Getting started .....	18



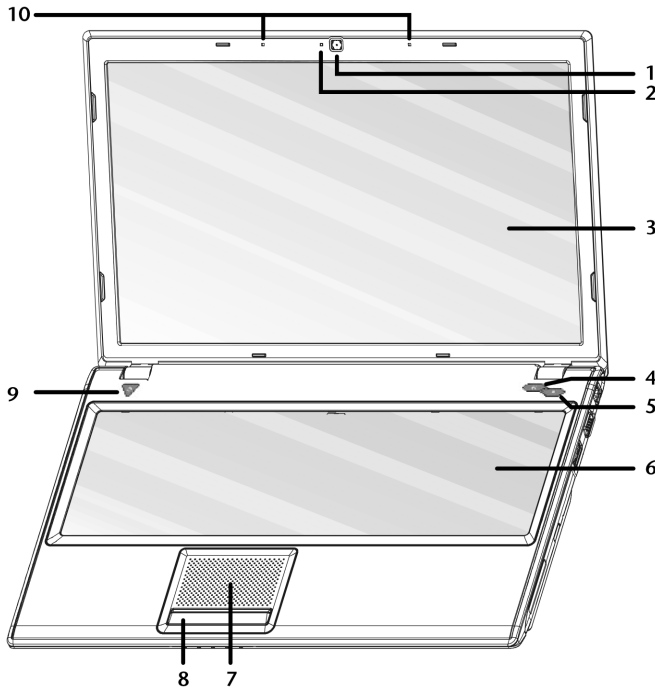
# Included with Your Notebook

Please check that the contents are complete and notify us **within 14 days of purchase** if any of the following components are missing:

- Notebook
- Battery
- Power adapter with connection cable (Model: Modell: ADP-90SB BBN)
- OEM version of operating system
- Documentation

# Views

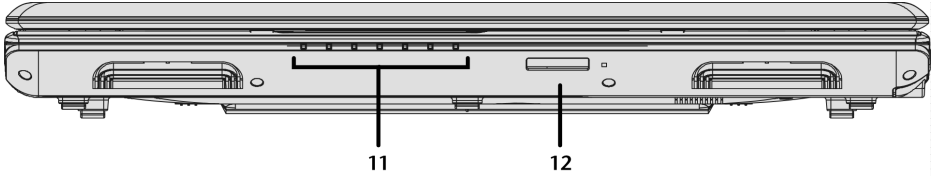
## Open Notebook



**(Diagram the same)**

- 1 - Webcam ..... (⇒ p. 59)
- 2 - Webcam Indicator ..... (⇒ p. 59)
- 3 - TFT Display ..... (⇒ p. 35)
- 4 - Disc Eject Button ..... (⇒ p. 47)
- 5 - User Defined Button ..... (⇒ p. 42)
- 6 - Keyboard ..... (⇒ p. 40)
- 7 - Touchpad ..... (⇒ p. 43)
- 8 - Touchpad Buttons ..... (⇒ p. 43)
- 9 - Power ON/OFF ..... (⇒ p. 27)
- 10 - Microphone..... (⇒ p. 52)

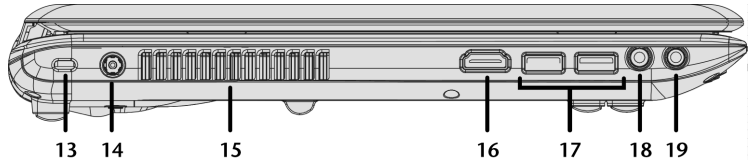
# Front View



**(Diagram the same)**

- 11 - Device Indicators ..... (⇒ p. 17)
- 12 - Multimedia Card Reader ..... (⇒ p. 58)

# Left Side

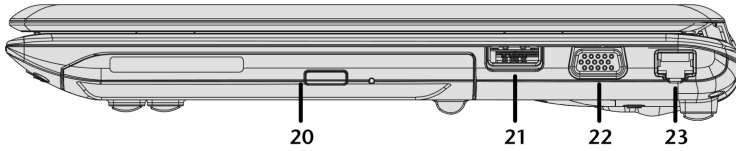


**(Diagram the same)**

- 13 - Kensington® Lock ..... (⇒ p. 62)
- 14 - Power Socket ..... (⇒ p. 28)
- 15 - Ventilator
- 16 - HDMI Connector ..... (⇒ p. 37)
- 17 - USB Port ..... (⇒ p. 60)
- 18 - Microphone \* / Line In\* ..... (⇒ p. 52)
- 19 - Audio Out\* /Digital Audio Out (S/P-DIF, optical) ..... (⇒ p. 52)

**\* Ports with dual function. Configuration is set with the included software (⇒ p. 52).**

# Right Side



**(Diagram the same)**

- 20 - Optical Drive .....(⇒ p. 47)
- 21 - e-SATA / USB Port .....(⇒ p. 61)
- 22 - External monitor port VGA .....(⇒ p. 36)
- 23 - LAN Port (RJ-45) .....(⇒ p. 54)

# Device Indicators

LED's indicate the power and operating system states of the Notebook. The meaning of each LED is:



## ECO LED

This LED lights when the ECO function is activated.



## WLAN LED

**Lights green** The Wireless LAN function is activated.



## Battery LED

Below you will see the different meanings of the LED in various situations:

**Lights green** The battery is charging.

**Lights orange** Battery is low.

**Is blinking orange** Battery defective.

**Off** The battery is full or the laptop/notebook is not connected to the mains adapter.



## Capital Lock

This LED lights when CAPS-Lock has been activated. This sets the keyboard to capital letters.



## Num Lock

This LED lights when NUM-Lock has been activated (NumLk).

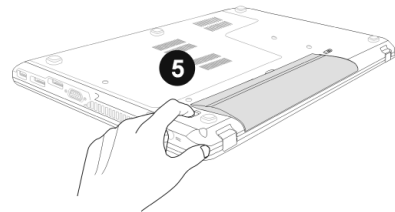
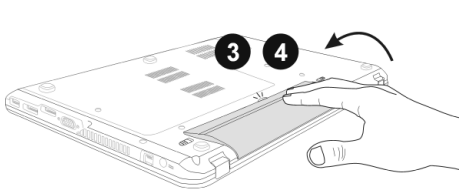
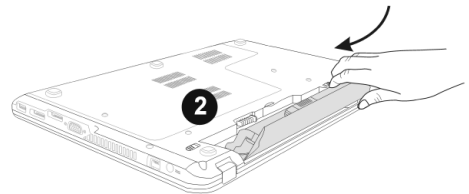
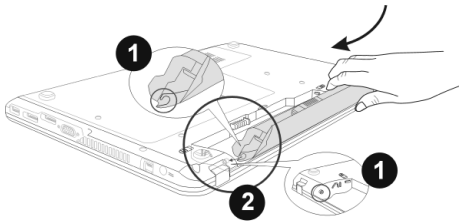
# Getting Started

Before you get started using your notebook, first take a few moments to read the important section on **Safety**. This notebook comes with software **fully pre-installed**. You do not have to install any of the discs supplied.

## How to start:

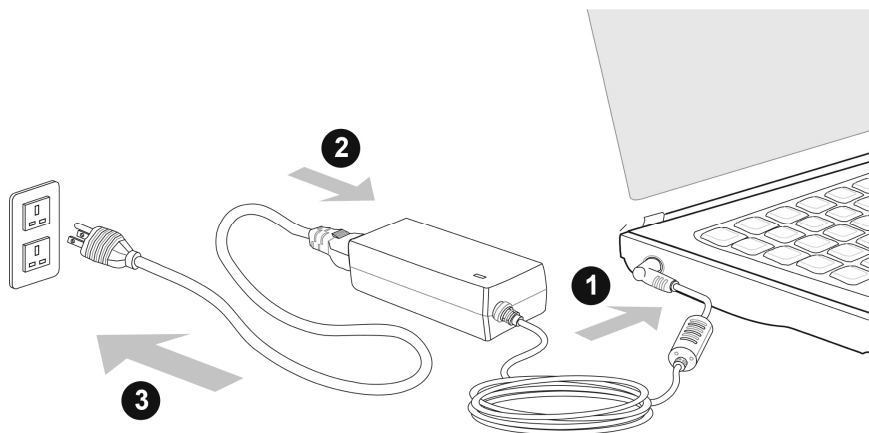
### Step 1

- Insert the battery before bringing the notebook into operation by sliding the battery pack into the compartment. Lock the battery under all circumstances, in order to avoid it falling out unintentionally.





- Connect the supplied power adapter to the notebook (❶) at the notebook power socket. Connect the power adapter (❷) via a power cable to a free AC power outlet (❸).



- Open the display to the required position with your thumb and index fingers. To avoid damage to the TFT Display, never open it more than 120°. Do not forcibly open it.

#### Note

Please ensure that the battery is inserted and the power adapter connected when operating the Notebook for the first time. If you fail to do this, Windows® 7 will not be able to calculate the performance index correctly.

- Switch the notebook on by operating the On/Off Switch. The notebook starts and now goes through a number of phases.



## Note

Make sure there is no bootable disc (e.g., the Recovery disc) in the optical drive. Such discs will prevent the operating system from loading off the hard drive.


The **operating system** is loaded from the hard disk. During the initial set-up, the loading process takes slightly longer than normal to register the operating system and the individual components completely. Your operating system is finished loading when a welcome screen is shown on your display.

## Note

The initial installation may take up to 30 minutes to complete. Do not unplug the notebook from the mains or switch it off during the initial installation. This may adversely affect the installation. Only switch the notebook off after installation has been completed successfully and the Windows desktop appears.

## Step 2

Follow the instructions on the screen. Dialogue boxes will explain any steps that need to be taken. The greeting procedure will guide you through a series of dialogue boxes. The information in each dialogue box will explain the steps that need to be taken.

Should you have any questions just click on .

- **License Agreement**

The greeting procedure also displays the license agreement. Please read this carefully. It contains important legal information on the use of your software. In order to see the full text, use the mouse and the scroll bar on the right side of the screen to move downwards until you have reached the end of the document. You accept the agreement by clicking on the **“I accept the agreement”** option field. Only by doing so will you be entitled to use the product under lawful terms and conditions.

## Step 3

After the login procedure the Windows® desktop appears on your screen.

You will find a brief overview on the following pages.

After the login procedure the Windows® desktop appears on your screen. This can be adjusted so that the screen of your computer looks different.

However, basic operation is guaranteed.

## Note

Windows might update and configure data (e.g. by means of new updates) in the first days after the initial installation. This could lead to delays during shutting down and starting up the notebook computer. Do not switch off the laptop/notebook prematurely for this reason. This could have a negative effect on the installation.

## Short Description of the Windows® Desktop

### ❶ Start Button

Clicking the Start button brings up a menu where you can access help, software programs, files, and settings

### ❷ All Programs

All of the software programs installed on your notebook are ordinarily listed here. Click **All Programs** to reveal an extensive menu.

### ❸ Taskbar

You can start programs and switch between already active programs using the taskbar beneath the screen. You can place every program in the taskbar under Windows® 7, so that you can always open it with a single click. Furthermore, you can rearrange the symbols on the taskbar by clicking on them and dragging them to the desired position. Move the cursor over the symbols, and the system will display a miniature of every file or window open in the program. When you move your cursor over the miniature, the system will display a full-screen preview of the particular window. If you move the cursor away from the miniature, the full-screen preview will close.

### ❹ Windows Search

**Windows Search** helps you find almost all data located on the notebook, quickly and easily. With Windows® 7, you get search results with greater relevance, and they are easier to understand.

### ❺ Program Bar

The most commonly used software programs are listed here. The operating system recognises all this automatically. Clicking on an entry with the right mouse key enables you to decide which entry on the list to keep or to remove. The program linked to the input is not erased.

### ❻ Turn Off

To turn off the notebook, click on the **Shut down** button with the left mouse key.

### ❼ Display Desktop

Click on this Button if you would like to minimise all the windows open onto the taskbar, in order to obtain a clear view of the Desktop.

### ⑧ Desktop Icons

Desktop icons link to their respective programs. To start a program, double-click its desktop icon.

The **desktop** encompasses nearly the entire screen and acts as the shelf space for such entries or for other links, to which you would like rapid access.

### ⑨ Logged in User

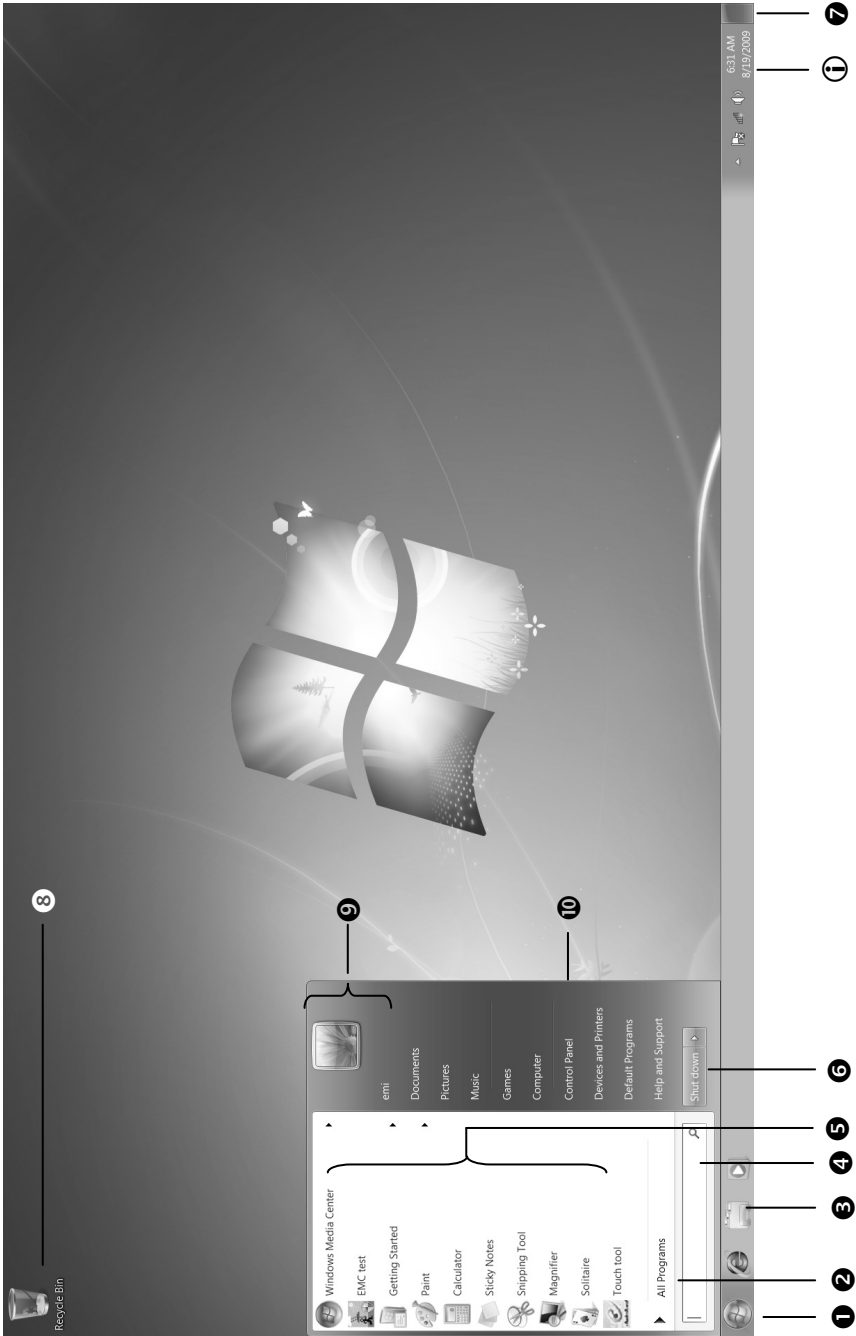
This tells you which user is logged in to your notebook.

### ⑩ Control Panel

You can use the icons in Control Panel to change the appearance and functionality of Windows®7. These icons represent options for configuring your notebook. You should, however, consult “**Help and Support**” on the potential effects of certain changes.

### ⑪ System tray

System tray on the current time. When certain events occur, for example, upon receipt of an e-mail message or upon opening the task manager, it may happen that too many notification symbols are displayed in this field. Windows® displays a notification symbol when an event occurs. After a short time, Windows® places the symbol in the background, in order to maintain the straightforwardness of the field. You can access the symbols placed in the background by clicking on a button in the system tray.





# Chapter 3

## Main Components

Subject	Page
Power Supply .....	27
Display .....	35
Data entry .....	40
Hard Drive.....	45
Optical Drive.....	47
Sound Card.....	51
Network.....	54
The Multi Card Reader.....	58
Webcam.....	59
Universal Serial Bus (USB) Port .....	60
eSATA / USB Port.....	61
Securing the Notebook .....	62
Software.....	63





# Power Supply

## On/Off Button

Power on or off your notebook by pressing the on/off button briefly.



The operational indicator will inform you about the operational status of the notebook. The notebook will always be switched off, if the main switch is pressed for more than 4 seconds.

### Warning!

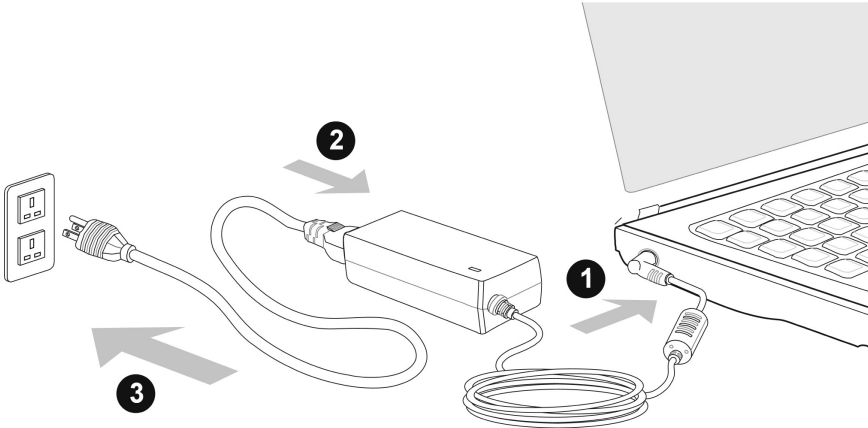
Do not switch off your notebook while the **hard disk** or the **optical drive** is running. Otherwise data may be lost. To protect the hard disk you should always wait for 20 seconds after powering down the notebook before powering it up again.

## Power Adapter

Your notebook is supplied with a universal AC power adapter, which automatically adjusts to the available power source. The following levels are supported:

**AC 100-240V~/ 50-60 Hz.** Please follow the power supply **safety instructions** found on page 5.

The power adapter is connected via a power cord to an AC outlet. The DC power lead from the power adapter is connected to the **left side** of the notebook (**14**).



The adapter provides the notebook with power and also charges the battery. The power supply indicators of the notebook provide details on the operating state. The battery is also being charged when you are working on your notebook with the power adapter. The power adapter is still live if the notebook is not connected with it. You should therefore unplug the power adapter from the outlet if it is not connected to the notebook.

### Warning!

Use only the power adapter and power cord supplied with your notebook.

# Battery Operation

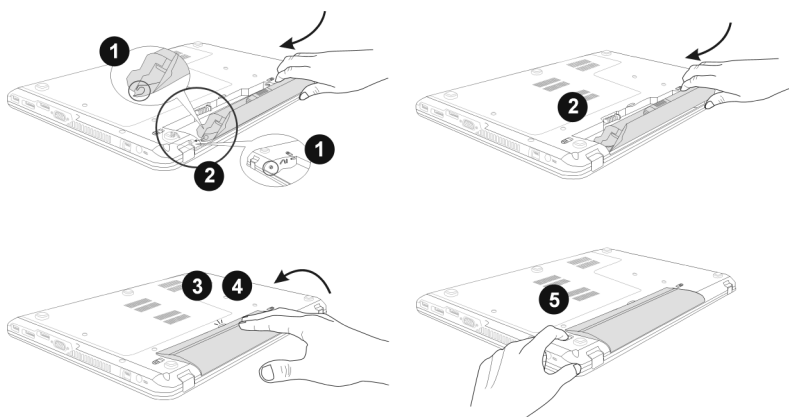
## Note

Please charge and discharge the new battery completely two to three times in succession, so that it will achieve its full performance!

Batteries store electrical energy in their cells and then deliver it when needed. The useful life and performance of your battery depend on careful handling. The battery should be completely discharged before a charging process and completely charged again, in order to optimize its useful life and its performance. You must also pay attention to the Safety Notes from page 8.

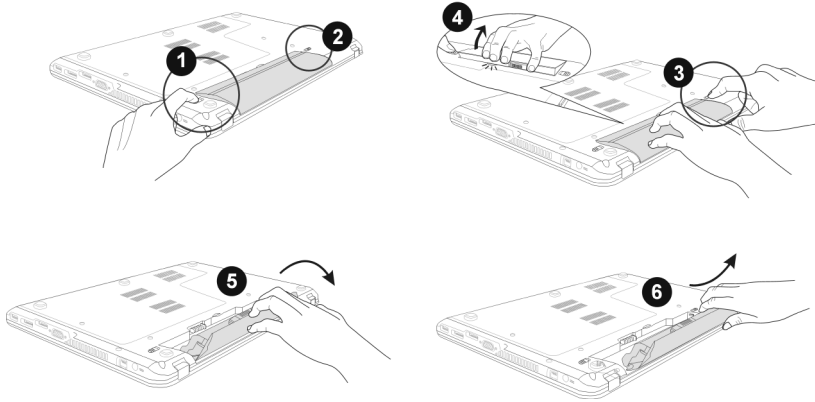
## Inserting the Battery

Insert the battery before bringing the notebook into operation by sliding the battery pack into the compartment. The battery should remain locked in order to avoid it falling out.



## Removing the Battery

Push the Safety Locks to the 'Unlock' position in order to remove the battery pack, then slide the battery out of the compartment.



### Warning!

Do not remove the battery while the notebook is running on battery power, this will very likely cause data loss.

### Warning!

Keep the contacts on the battery and notebook clean when storing them. Dirty contacts might lead to malfunctions.

## Charging the Battery

The battery is charged via the power adapter. If the power adapter is connected, it charges the battery automatically, whether the notebook is turned on or not. When the notebook is switched off, full charging takes a few hours. If the notebook is switched on, the charging process takes a significantly longer time.

### Note

The charging process will be interrupted if the temperature or the voltage of the battery is too high.

## Discharging the battery

Operate the notebook by means of the battery until it switches off independently because of the low battery charge.

### Note

Think about saving your open files in good time, to avoid a possible loss of data.

## Battery Performance

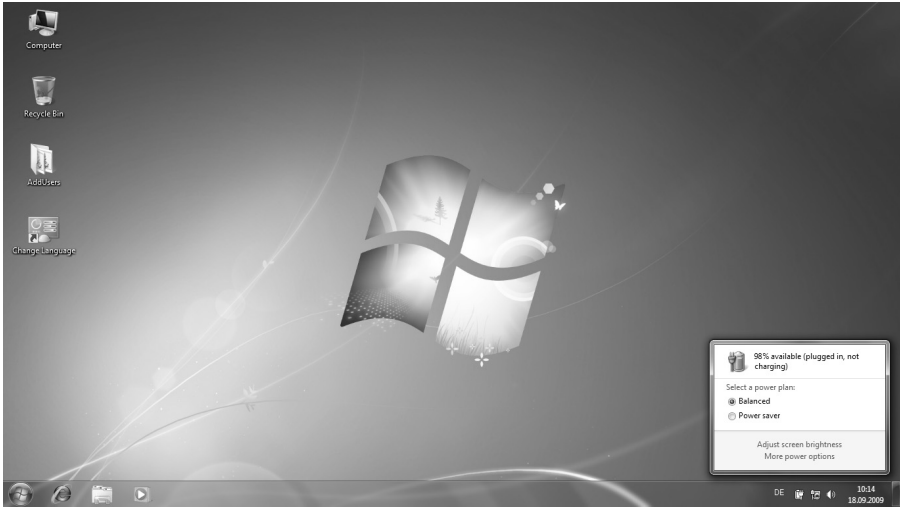
The particular operating duration will vary according to the setting of the energy saving functions. You can adjust these to your requirements under **Energy Options** in **System Control**. Apart from this, your notebook will require a higher power demand when carrying out certain tasks.

# Checking the Battery Level

In order to check the current level of the battery, move the cursor over the power symbol in the taskbar.

The symbol of a battery is displayed during battery operation.

You will receive additional information about settings if you double click on this symbol.



## Note

If you ignore the warning signal when the battery level is low, your notebook goes into hibernate mode.

## Warning!

Never remove the battery while the notebook is switched on or if the notebook has not yet gone into hibernate mode, as this may lead to loss of data.

# Power Management

Your notebook offers automatic and modifiable power saving functions that you can use to maximize battery life and reduce overall operating costs. The power saving modes are known as sleep mode and hibernate mode.

## Sleep Mode

When in sleep mode, the contents of the RAM of your notebook are preserved while practically all other components of your notebook are shut down, reducing your power consumption to a minimum. By pressing any key on the keypad, you can bring your notebook back to the fully operational state. You will restart at precisely the line in which you were working prior to the interruption. The computer takes less time to go into and come out of sleep mode, but uses more power than hibernate mode.

## Hibernate Mode

The hibernate mode is an alternative to a complete shutdown of the notebook. In this mode all data from RAM (system and graphic data) are copied to the hard disk as a file. As soon as the data has been safely saved, the notebook powers down. When the notebook is switched on again, this file is written back to RAM by the BIOS. In a few moments the notebook is in the exact state as when it was last used. If while working on a document the notebook is closed (assuming the correct ACPI setting), the notebook saves the data in RAM for you automatically. You will restart at precisely the line in which you were working prior to the interruption. The computer uses no power while it is in hibernate mode, but it takes a little longer for the computer to go into and come out of hibernation compared to sleep.

## ECO Function

With the aid of this function you will be able to save energy and extend the life of your battery if you are working with your laptop in battery operation.

### Switching the ECO function on /off

The ECO function is switched on or off by means of the **Fn+F5** key combination. The following will appear




and the operating display will shine **green** if the ECO function is switched on.

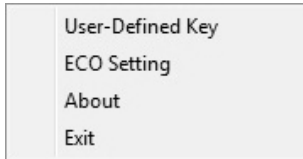
## Making settings

The ECO function must have been **deactivated**, in order to make settings.

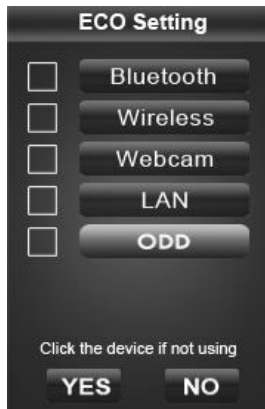
1. Press the key combination **Fn+F5**. The following will appear:



2. Now click on the  icon in the Taskbar with the right mouse button. You will open the System Control Manager (SCM), with which you will be able to make settings, by this.



3. Click on **Eco Setting**. The following window will appear on the screen:



You will be able to select which functions in this Menu should be deactivated to save energy in battery operation, if the ECO mode has been switched on.

### Attention!

The ECO function can only be used in **battery operation**.



# Display

## Opening and Closing the Display

The display is locked by means of a special construction of the display hinge so that an additional lock is not necessary.

To open, lift the display with your thumb and index finger and position it as desired.

### Warning!

To avoid damage to the TFT Display, never open it more than 120°. Do not forcibly open it.

The opening and closing of the display can be assigned various functions via the Power management feature.

## Screen Resolution

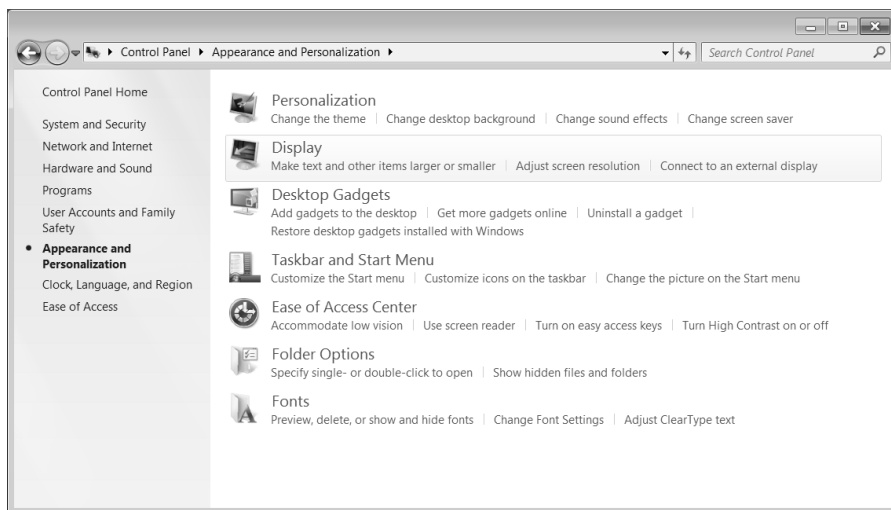
The integral screen has a native resolution of **1366 x 768** pixels. Using a higher resolution can lead to distortion of the display, especially with text. Using a lower resolution may cause the display to use only a portion of the screen area.

You can adjust the presentation to the mode supported with the Windows “**Control Panel** ⇒ **Appearance and Personalization** ⇒ **Display Settings** ⇒ **Adjust screen resolution** ⇒ **Advanced Settings**” Help Program.

# Appearance and Personalization

This program offers you the possibility of adjusting the presentation on your display. This includes the background image, the screensaver, Active Desktop (web) and additional settings of your display and your graphics card, for example. The program can be started in the following way:

- Right mouse click on the Windows interface (Desktop) and left mouse click on **Personalization**
- or**
- Via **Start** ⇒ **Control Panel** ⇒ **Appearance and Personalization** with a double-click with the left mouse button.



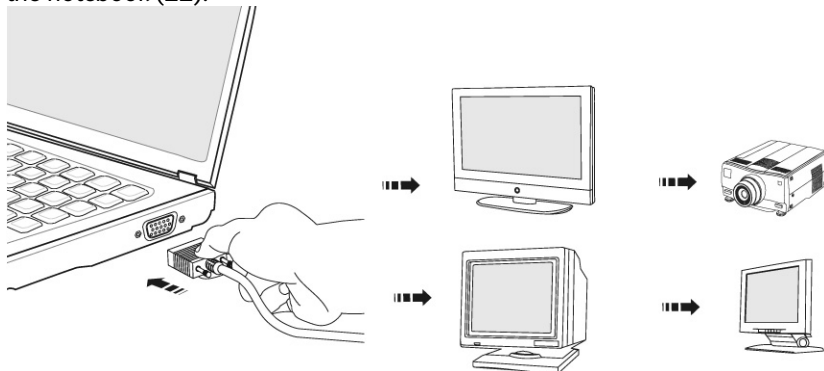
The following adjustment possibilities are available:

- **Personalization**
- **Display**
- **Desktop Gadgets**
- **Taskbar and Start Menu**
- **Ease of Access Center**
- **Folder Options**
- **Fonts**

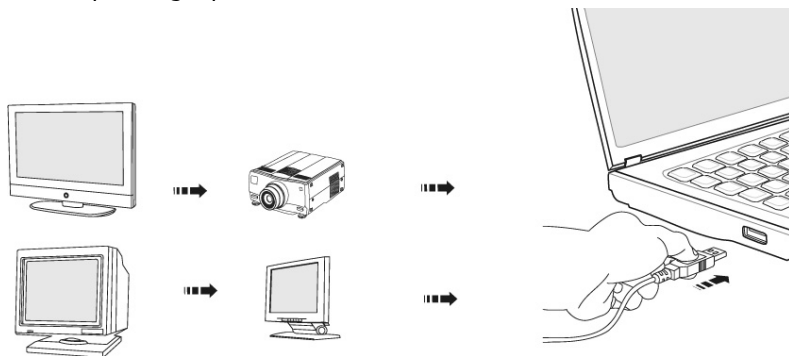
## Connecting an External Monitor

The notebook has a VGA port (22) for connecting an external monitor.

1. Shut down your notebook.
2. Connect the video signal cable of the external monitor to the VGA port of the notebook (22).



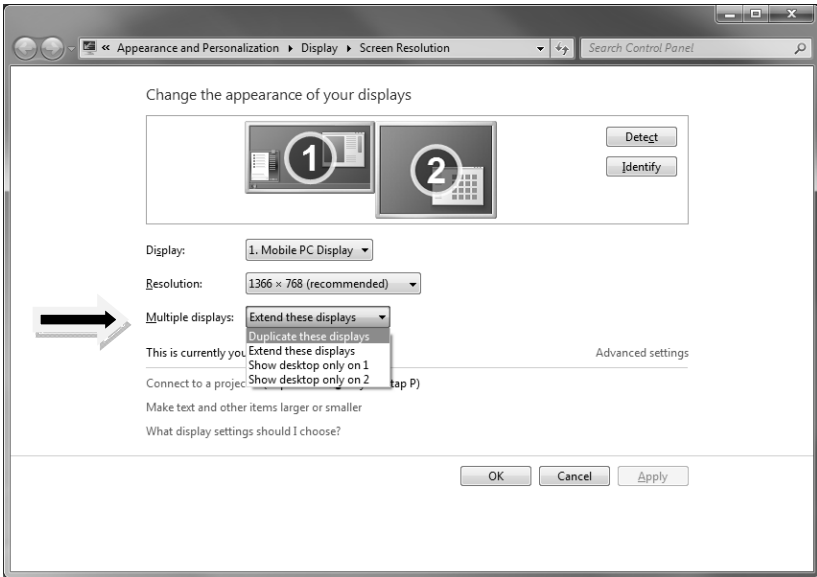
Alternatively, you will be able to use the digital HDMI (High Definition Multimedia Interface) connection (16) for the transmission of image and sound signals, provided that your output device (a monitor or LCD TV) has a corresponding input.



3. Connect the external monitor to the electrical socket and power it up.
4. Start your notebook.

The external screen will be determined after the operating system has been loaded. Several possibilities will be available to you. You will call them up as follows:

1. A right click on the display.
2. Select the **Screen Resolution** option in the selection window.



3. Select from the following options under **Multiple displays**:
  - **Duplicate these displays**
  - **Extend these displays**
  - **Show desktop only on 1**
  - **Show desktop only on 2**

## Duplicate the Desktop

This Mode duplicates the display of the notebook on an external monitor.

### Information

The same screen resolution must have been set on both devices in the case of this mode.

## Extend the Desktop

An empty Desktop will be shown on the second (external) monitor in this mode. Windows from the first screen can be pushed to the second screen and vice versa.

The screen resolution and the colour quality of the individual display devices can be set individually under **Start** ⇒ **System control** ⇒ **Appearance and Personalization**.

## Only display the Desktop on 1

The Desktop will only be displayed on the main monitor 1.

## Only display the Desktop on 2



The Desktop will only be displayed on the second (external) monitor.

# Data Entry

## The Keyboard

By dual assignment of certain keys you have the same range of functions available to you as with a normal Windows® keyboard. Some functions are input using the **Fn** key, which is normal on notebook computers.

### Notebook-Specific Key Combinations

Combination	Description
Fn + F2	Display Toggles the display screen between internal monitor, external monitor and simultaneous display.
Fn + F3	Touchpad Switches the touchpad on / off.
Fn + F4	Programmable P1 key You will activate or deactivate the user-defined P1 key with this key combination. Read the following <b>“Programming the user-defined P1 key”</b> section (on P. 42), in order to program the key.
Fn + F5	ECO function Enables or disables the ECO function (see p. 34).
Fn + F6	Webcam Enables or disables the webcam.
Fn + F7	Touchpad illumination Switches the illumination around the Touchpad on or off.
Fn + F8	WLAN Enables or disables the wireless LAN function.  WLAN on  WLAN off
Fn + 12	Save energy. This key combination is set to shut down as standard. Please go through <b>Personalization , Energy Options</b> , in order to adjust this key combination to your needs.

Fn + PgUp	Jump to the start of the line, the document, the selection, etc.
Fn + PgDn	Jump to the end of the line, the document, the selection, etc.
Fn + Insert	Mute Switches the loudspeakers on / off.
Fn + ►	Increases the volume.
Fn + ◀	Decreases the volume.
Fn + ▼	Reduces screen brightness.
Fn + ▲	Enhances screen brightness.



#### Switching the graphics card

Your laptop is equipped with two graphics cards. Both graphics cards are active in mains operation. The more powerful card will be switched off in battery operation. You can switch to the more powerful graphics card with this function key.

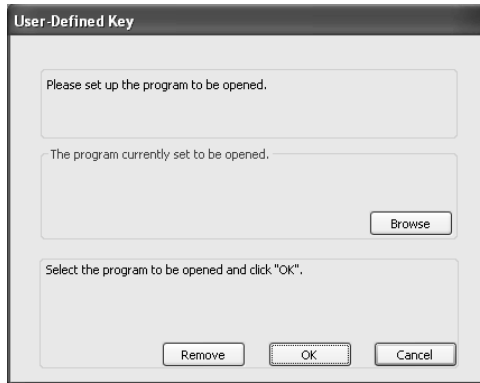
#### Note

You should close all applications before switching manually. The switch will be confirmed by a corresponding message after each reset.

# Programming the user-defined P1 key


Proceed as follows to program the user-defined P1 key:

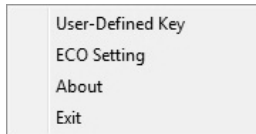
1. Press the **Fn+F4** key combination. The following Window will open:



2. Click on **Browse** to give the key a function.
3. Select a program and click on **Open**.
4. Confirm your selection with **OK** in the following Window:

## Changing the use of the key

1. Click on  in the lower right section of the taskbar on the screen with the right mouse button, if you wish to change or remove the use of the key.



Then click on **User-Defined Key** and you will be able to change or remove the current programming of the key.



# Touch Pad

The touchpad is positioned in front of the keyboard.

The mouse pointer (cursor) follows the direction pre-determined on the touchpad by the movement of your finger in the normal mode.

## Caution!

**Do not** use a ball-point pen or other object on the touch pad, as this could damage or cause a malfunction of your touch pad.

Below the touch pad are the left and right mouse buttons which can be used as on a normal mouse.



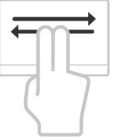

You can also perform a direct click or double click using the touch pad by tapping the surface briefly once or twice.

In the Windows® Control Panel you will find a number of useful settings that will make using the touch pad easier.

# Two-Finger Gesture

Your touchpad supports a two-finger gesture which can be applied to customized functions.

The gestures and their functions are described as follows:

Illustration	Gesture	Function
	Expand / Narrow	Zoom out object / Zoom in object
	Rotation	Counter clock-wise rotate object
	Flick from the left to the right/ Flick from the right to the left	Forward / Backward
	Scroll Function	This function is often used to scroll over the screen without moving the cursor.

# The Hard Drive

The hard drive is the main storage medium combining large storage capacity and rapid data access.

The hard drive contains the operating system of the computer, other application programs and backup files. These programs and files are pre-installed on your notebook, so you may note that some of the space on your hard drive is already taken.

The Windows operating system cannot use the full capacity of the hard drive, which means that there will be a difference between the capacity that the BIOS displays and what the operating system displays. The operating system of the notebook, further application programs and backup files are located on the hard drive and reduce its total capacity.

The hard drive is addressed as drive **C** and **D**.

## Note

Never switch off the computer while the busy indicator is lit since this may result in loss of data. A flickering hard drive display is your indication that the notebook is accessing the hard drive.

Usually your hard disk is divided into more partitions. The configuration of your hard drive can be displayed and configured under "**Disk Management**". To familiarise yourself with the hard drive configuration, search Windows Help for the key word "**Disk Management**".

In your first partition (**C:\**) you will find the operating system, application programs and the users' documents.

The second partition (**D:\**) serves for data security and contains additional drivers (**D:\Driver**) and tools (**D:\Tools**) for your notebook.

## Note

You will also find in two otherwise non-overwriteable partitions the system restoration start files (⇒ p. 85), as well as installation files for Windows® 7. These partitions are not visible and should not be erased.

# Important Directories

In the following we have listed the most important directories and described their content.

## Attention!

Do not delete or modify these directories or their contents since data could be lost or the functionality of the system could be at risk.

- C:\** The master directory of drive C: includes important files required to start Windows®. In the factory setting these files are hidden for safety reasons.
- C:\Program Files** As the name suggests, in this directory programs install the files belonging to the application.
- C:\Windows** The main directory of Windows®. This is where the files of the operating system are saved.
- D:\Driver** This folder includes the drivers required by your computer (pre-installed).
- D:\Tools** Here you find additional programs and other documentation for your notebook.

# The Optical Drive

## Loading a Disc

Unlike optical drives of desktop PC's optical drives of notebooks retain discs with the help of a locking mechanism.

When inserting the disc, you should take care to push the disc right **onto the locking mechanism** so that it can lock in position.

### Note

Do not place protective foils or other stickers on your discs. To avoid damage to your drive, do not use deformed or damaged discs.

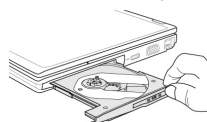
### Warning!

Do not use scratched or dirty discs, discs with pieces broken off or discs of poor quality. Because of the high speeds in the drive the discs might break and damage your data as well as your drive. Examine the discs before you insert them. If damage or dirt is visible, you should not use them. Damage caused by faulty media is excluded from warranty and their repair must be charged.

### Warning!

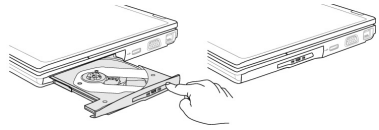
The disc can be damaged when the drive drawer is pushed in if it has not been pushed onto the locking mechanism correctly.


1. Press the eject button at the optical drive to open the tray.
2. Remove the disc from its case without touching the unprinted side if possible.
3. Place the disc on the tray so that it lays flat with the label facing upward and gently push the tray in to close it. The disc will now lie



flat on the tray and will engage onto the disc holder audibly.

4. Test that the disc is able to turn freely and then push the tray back into the optical drive carefully.



The 'E' drive letter will have been allocated to your optical drive in the delivery status. You will have easy access to your files on your disks with Windows® Explorer (**Computer**). Start the **Computer** Help Program by means of the Desktop link or by pressing the Windows® key  and the 'E' key at the same time. Open Windows® Explorer by means of **Start** ⇒ **All Programs** ⇒ **Accessories**.

The pre-installed media reproduction will be used automatically during access to DVD videos (or audio and video files on normal data CDs).

### **Warning!**

While the notebook is accessing the optical drive the media activity indicator is lit. Do not try to remove the disc from the drive while this LED is lit.

## **Emergency Ejection of a Blocked Disc**

If the tray fails to open automatically, the tray can be opened manually provided there is an opening for emergency ejection.

Restart your notebook and if the tray is still locked proceed as follows:

1. Shut down Windows® and switch off your notebook.
2. Insert a long thin object (like a straightened paper clip) into the emergency ejection opening until you feel resistance.
3. Press lightly and the tray will open.
4. Remove the disc and restart the notebook.

## Playing Back and Retrieving Data from Discs

Your notebook is able to playback and to retrieve information of Audio CDs, DVD Movies and Data discs.

After loading the disc your operating system will open a selection window with different options for playback. Normally there are various programs at your disposal.

If your operating system doesn't open the selection window you still have the possibility of the access via the "Explorer" or "Computer".

## Regional Playback Information for DVD

The playback of DVD movies includes the decoding of MPEG2 videos, digital AC3 audio data and the deciphering of CSS protected contents. CSS (sometimes called copy guard) is the name of a data protection program incorporated by the movie industry as an action against illegal copies. Among the numerous regulations for CSS licensees the most important ones are the country specific playback restrictions. In order to facilitate the geographically restricted release of movies, DVD titles are released for certain regions. Copyright laws require the restriction of each DVD movie to a certain region (usually the region in which it is sold).

DVD movie versions can be published in several regions but the CSS regulations require that each CSS decipherable system may only be used in one region.

### Note

The decoding software included with your notebook may be changed for regional DVD decoding **up to five times**, after which the drive will only play DVD movies for the region setting last entered. Changing the region code after that will require factory resetting which is **not** covered by warranty. If resetting is desired, shipping and resetting costs will be billed to the user.

# Subjects Concerning the CD/DVD-Rewriter

This Section only relates to devices that have been supplied with a CD-RW, a combination drive or a DVD-RW drive.

First of all, you receive information on the so-called **blank discs**.

## Recordable/Rewriteable Discs

Normal Discs are pressed from a digital, glass master and then sealed. In the case of blank disc, the information is burnt onto the disc with the laser of the Rewriter. Therefore these discs are more sensitive than normal discs.

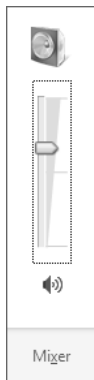
Please avoid the following when using recordable/rewriteable discs that have never before been used:

- radiation by direct sunlight (UVA/UVB)
- scratches and damage to the disc surface
- extreme temperatures

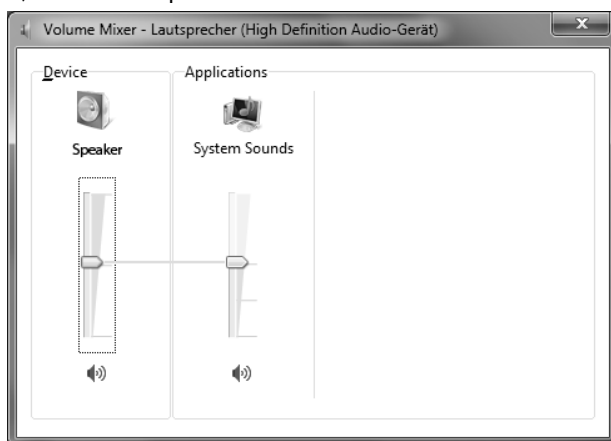


# The Sound Card

Your notebook has an integrated stereo sound card (on-board) with 16-bit and 3D spatial sound effects (3D). The sound card is compatible with the industry standard Sound Blaster and Microsoft Sound System Version 2.0. This guarantees optimal support for all popular programs and games. If you wish to alter the base volume, click on the loudspeaker symbol in the task bar.



Click on **Mixer**, in order to open the volume mixer.



By using the keys **Fn + ←** and **Fn + →** you have the possibility to regulate the volume.

# External Audio Ports

Your notebook has a loudspeaker, so you can always playback sounds without additional equipment. The use of the external connections gives you a good opportunity to connect your notebook to external devices.

## Caution!

The use of earphones with a high volume can lead to lasting damage to your hearing. Set the volume to the lowest level before reproducing any sound. Start the sound reproduction and increase the volume to the level that is comfortable for you.



It can cause damage to the hearing ability of the listener if a device is operated through earphones with an increased volume for a long period.

**Microphone In**  
(18)

For recording via an external microphone.

For sound reproduction via an external surround system for external centre / subwoofer.

**Line In**  
(18)

For reception through an external source of sound.

For sound reproduction with a surround system for speakers back.

**Audio Out /  
Digital  
Audio Out  
(S/P-DIF optical)**  
(19)

For sound reproduction with an external surround decoder via an optical cable (available separately at a specialist shop).

For sound reproduction via external stereo equipment such as loudspeakers (active) or headphones.

## Setting the Recording Level

To set the desired recording level, go to **System control** ⇒ **Sound** ⇒ **Recording** and select the source.

The button **Microphone** is intended for the integrated microphone. If you want to use an external microphone or another recording source (Line In), select the relevant option.



## Dolby® Advanced Audio

Enjoy a Rich Surround Sound Experience.

Dolby® Advanced Audio® places listeners in the middle of the action, giving their PCs a powerful set of tools to deliver a cinema-style experience in vivid surround sound.

- Creates a stunning personal surround sound listening experience.
- A suite of technologies designed to provide an developing entertainment experience from any pair of speakers or any set of headphones.
- Enables easy connectivity to home theatres through a single digital cable.

# The Network

## What is a network?

A network means connecting your notebook to one or several other computers. Users can transfer data between computers and share resources such as printers, modems and hard disk drives.

Here are some practical examples:

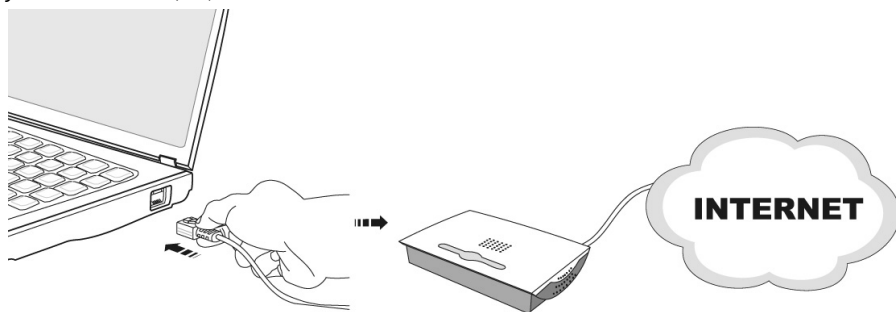
- You can exchange E-mail and manage appointments in an office.
- Users can share a printer in a network and save their data on a central server.
- Two or more computers can be connected to play network games or share data.

## Ethernet-Network

If your notebook has an Ethernet connection, you can use this to connect to a network.

The following explanation refers to notebooks with a network connector.

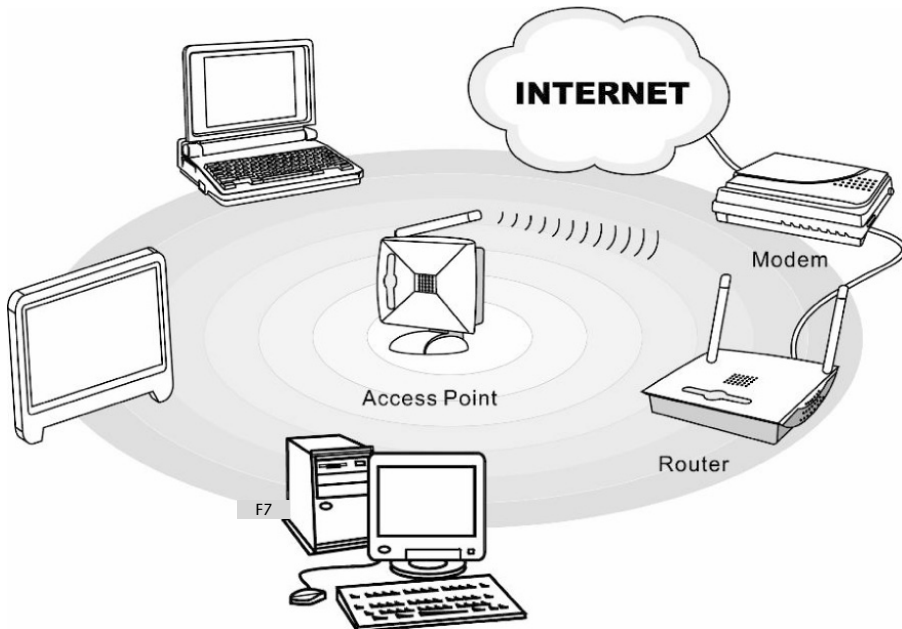
Connect one end to the RJ45 connection (Western plug) at the network interface of your notebook (23) and the other to another notebook or a hub/switch.



The Windows Help and Support Centre offer extensive information about networking your Notebook. You can access this information by clicking on **Start**, then **Help and Support**.

## Wireless LAN

Wireless LAN is an optional feature. This function allows you to create a wireless network link with an access point or directly with another wireless-enabled PC. Using the Quick launch key combination **Fn+F8** you can enable or disable the wireless LAN function. A corresponding LED will light.



### Warning!

Make sure the Wireless LAN option is switched OFF in any environment where it might interfere with critical and sensitive devices, e.g. on aircraft, in hospitals and other medical centres, etc.







## Conditions

An access point is a wireless transmitter that communicates with your notebook and controls access to the network connection (e.g., a home network or a broadband connection such as DSL). Wireless access points are often found in offices, airports, universities or Internet cafés. They offer access to networks or to the Internet. **Access authorizations** are normally needed. A fee may be required to use a public access point. To set up a wireless network to share Internet access, files, and printers at home, you will need an access point, a router, and a broadband (DSL or cable) modem. Some access points can also serve as a router and/or a broadband modem. Check with your retailer or Internet Service Provider to find the best solution for your needs. A link to another computer with wireless LAN functionality can also be created **without an access point**. This will allow you to share files, but you will need an access point and a router to share an Internet connection. The wireless network connection works in accordance with the **IEEE 802.11n** Standard (compatible with the 802.11b/g Standard). If encrypted transmission is used, this must operate according to the **same principle on all devices**. Encryption is a method of protecting the network from unauthorized access. The transmission speed (max. 300 Mbp/s) can vary according to the **distance** and **loading** of the partner.

---

\* 300 Mbit/s is a gross value. A maximum of 75 Mbit/s will be achieved on the application level. A WLAN router in accordance with the 801.11 standard will be necessary, in order to be able to exploit the complete performance.

## Troubleshooting within the Network

-  Why does an error message appear when I click on the network environment?
-  The **computer name** must be unique on the network and may not be the same as the **task group**.
-  It appears that the network boards are unable to communicate. What might be the problem?
-  Maybe one of the used network boards works with a **different speed** (e. g. 10 instead 100 Mbit/s) and your network computer is unable to recognize this. If necessary, set the network driver to the compatible speed.  
If two PCs should be linked you require a **cross-link** cable, otherwise use a **patch** cable.  
In addition, check the **protocols** and the **configuration**.
-  The data transmission is incorrect or very slow. What might be the problem?
-  Maybe you have the wrong cable (UTP / CAT3 or lower) or the problem is the proximity of a power cord or another source of interference.

For further hints on troubleshooting refer to the Windows help under “**Network errors**”.

# The Multimedia Card Reader

Memory cards are media that are being used for a variety of purposes, especially in digital photography. They are increasingly replacing the floppy disk. The form and capacity of a memory card can vary according to the manufacturer.

Your notebook supports the following formats:

- MMC (MultiMediaCard)
- SD® (Secure Digital)
- Memory Stick / Memory Stick Pro

When inserting memory cards, ensure that the contacts are facing the right way. See table below. Incorrect insertion of a card can cause damage to the card reader and/or the card.

Card type	Contacts
SD® (Secure Digital)	pointing downwards
MMC (MultiMediaCard)	pointing downwards
Memory Stick	pointing downwards
Memory Stick Pro	pointing downwards

## Inserting Memory Cards

### Note

Memory cards can only be installed in **one direction**. Refer to the instructions above.

Push the memory card into the slot.

## Removing Memory Cards

To remove the SD®/MMC-cards or memory sticks pull it out and remove it.



# Webcam

Various services like calling online can be used with the built in webcam.

## Actual example using Windows Messenger

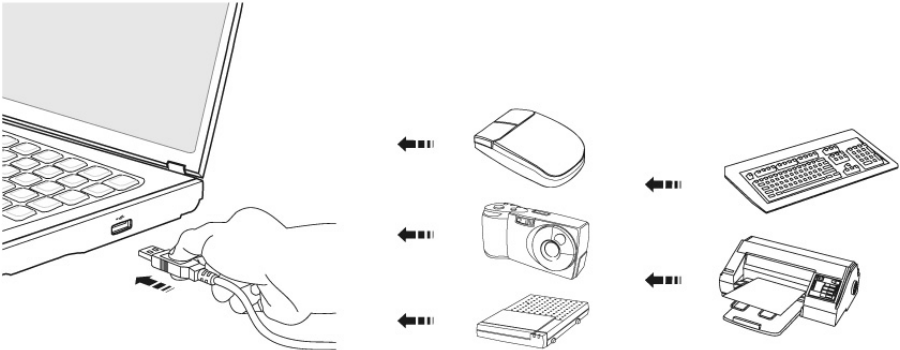
1. Start Windows Messenger and create a user account if you do not already have one. This service is free of charge. You only pay the cost of your Internet connection.
2. Select your contact from the list and click on the camera icon below your display image.

A wizard helps you optimize the settings of your speakers, microphone and webcam. Follow the instructions on your screen.

3. Click on **Finish** to transmit your image via the webcam.
4. If your contact also has a webcam, click on the camera icon below the display image of your contact to receive the live image.

# Universal Serial Bus (USB) Port

USB ports provide an easy way to connect many peripheral devices to your notebook (17). You can use any USB device with any USB port. Your notebook has **2 USB 2.0 connection sockets** (USB 1.1 compatible).



Some USB devices require that you reinstall software drivers when you connect the device to a different USB port than the one originally used. This can be avoided by always using a certain device with the same USB port.

Devices connected directly to the USB port should not draw more than 500 mA. Should the devices need more power than this, it will be necessary to provide a powered hub. The data transfer speed is 1.5 Mbit/s or 12 Mbit/s, depending on the device connected.

## Note

Some USB devices require that you reinstall software drivers when you connect the device to a different USB port than the one originally used. This can be avoided by always using a certain device with the same USB port.

# eSATA/USB Port

eSATA stands for "external **S**erial **A**TA" and is used for connecting external hard disks. Unlike common USB standards, the transmission speed of an eSATA connection is higher than that of external USB hard disks.

This connection is a "combo slot", to which both USB and S-ATA devices can be connected.

## Remove S-ATA Devices

Before removing an S-ATA hard disk from your notebook, click on the icon "**Safely remove hardware**" in the task bar and then click on the hard disk to be removed. It is now safe to remove your S-ATA hard disk.

# Securing the Notebook

Unauthorized access to software and hardware solutions will be made available to you with your new Notebook.

## Startup Password

You can protect your notebook against unauthorized use with a switching on password. Then, an invitation to enter the password will appear on the screen when the notebook is switched on.

The password will be set up in **BIOS**.

### **Warning!**

Keep your password in a safe place. You will not be able to delete your password if you forget it. Contact your customer Service if you loose your password.

## Using a safety lock

You can prevent theft by using a so called **Kensington lock**, which can be bought at your local retailer.

The cable wraps around an object and the “T” shaped end inserts into the Kensington lock port and a key or combination dial is used to secure the lock in place. Please keep your key at a safety place.

# Software

This section concerns itself with software. We make a distinction between the operating system, the software (application program), **Windows activation, BIOS and the security package BullGuard, which is delivered with the device.**

## Getting to Know Windows® 7

With Windows® 7, is launching the new operating system and successor to Vista®. Windows® 7 contains a number of innovative functions and technologies, enabling your notebook to work quickly and reliably, while being easy to use.

### Windows® 7 - News

#### Improved Taskbar

The Taskbar at the bottom of the screen enables you to start programs and change between programs which are already running. Using Windows® 7, you can place any program in the Taskbar, so that it will always open with one single click. You can also arrange the symbols on the Taskbar simply by clicking on them and dragging them to the desired position. The symbols are also considerably bigger, so that they are easier to use. Moving the cursor over the symbols will display miniatures of each file or each window open in the program. Moving the cursor over the miniature displays a full-screen preview of the particular window. Moving the cursor away from the miniature closes the full-screen preview.

#### Jump lists

Jump lists offer a practical possibility when opening files which you have recently worked on. To display recently used files, just right-click the application symbol on the Taskbar. Right-clicking on the Word symbol will display recently used Word documents. You can also easily place other files in the jump list if you would like to have them readily at hand, in which case they will always be displayed. This allows you to access documents which you use more frequently, with just a few mouse clicks.

The jump lists from a few programs, such as Windows® Media Player, can be filled in advance with frequently used commands. Thus, for example, the Windows® Media Player jump list might contain options to play all music or to re-open the latest play list.

The Internet Explorer jump list displays frequently and most recently visited websites. For certain programs, this enables rapid access commands which, in the past, could only be retrieved from the program itself, such as the command to create a new e-mail message.

## Improved Desktop

Windows® 7 simplifies working with the windows on the Desktop. This provides you with more intuitive possibilities for opening and closing, as well as for changing the size and for rearranging.

Windows® 7 makes the performance of everyday tasks even simpler. For example, the Snaps function makes it easier than ever to compare two open windows. You do not need to adjust the size of the open window for comparison. Simply pull the window, using the mouse, to one of the edges at the side of the screen, and it will fill half the screen. Snap the window on both sides, and it is already easier than ever to compare two windows.

If you would like to display all Desktop mini-applications, simply move the mouse into the lower right hand corner of the Desktop. This makes all open windows transparent, so that the Desktop and all the mini-applications located on it will be instantly visible.

Click on the Titlebar of the window, "shake" it, and all open windows will be displayed as symbols on the Taskbar. "Shake" the window again, and the other windows will be displayed again.

## Better device management

Windows® 7 enables you to close, manage and use all devices through the "**Devices and Printers**" central function.

All devices are displayed in a central position.

With the new Device Stage Technology, Windows® 7 even goes one step further in device management. Device Stage helps you use all compatible devices connected to your computer. Thanks to Device Stage, now you display the device status in one single window and carry out often-used commands. You will even find pictures of the devices here, easily enabling you to see which devices are connected. The manufacturer of the devices can even adapt Device Stage. If the manufacturer of your camera, for example, prepares an adapted version of Device Stage, you can see the number of photos on the camera and receive links to useful information when you link the camera to the notebook.

## Homegroup



With **homegroups**, a new function of Windows® 7, the linking of home computers is really simple. A home network group is created automatically, for example, when you link the first notebook under Windows® 7 with the home network. The addition of additional PCs with Windows® 7 to the home network group is quickly accomplished. You can indicate exactly what should be released on each PC for all other PCs in the home network group. Finally, the shared use of files on the various home PCs, and on many other devices, is so simple that it is as if all files were located on one single hard drive. This allows you to store digital photos on the computer in your home office and then enjoy easy access to them from a laptop in any other room in the house. Similarly, the printer in home office is automatically released for all PCs in the house, as long as they are all in the home network group. Beginners and persons changing from other Windows versions systems are advised to read this material carefully.

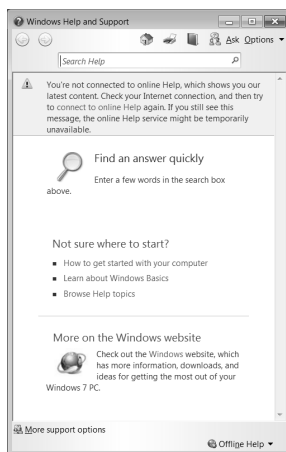
## Windows® 7 – Help and Support

An answer to almost every question can be found in this program.

This help function fully covers the Windows operating system.

It is helpful for both beginners and professionals. You can print or bookmark the information, which is categorized into topics. You start like this:

1. Click on **Start** 
2. Now select **Help and Support** 



# Windows® 7 – Getting Started

Learn everything you need to know about the features of the notebook.



It is the aim of this feature to enable both beginners and experienced users to make additional setting for the optimal use of Windows®7 after first bringing the Notebook into operation.



**Getting Started** has been subdivided into many small groups of subjects, so that the user will have the possibility of adjusting the content optimally to his or her knowledge. There are some of the links in the following:

- Go online to find out what's new in Windows®7
- Personalize Windows
- Transfer files and settings from another computer
- Use a homegroup to share with other computers in your home
- Choose when to be notified about changes to your computer
- Back up your files
- Add new users to your computer
- Change the size of the text on your screen

Use **Getting Started** to understand your notebook better and in order to be able to use it optimally. It will also serve you as an additional source of information for recognizing and removing potential problems.

You will call up **Getting Started** as follows:

1. Click on **Start** 
2. Select  **Getting Started** in the Program List.

## Windows® 7 – User Account Control

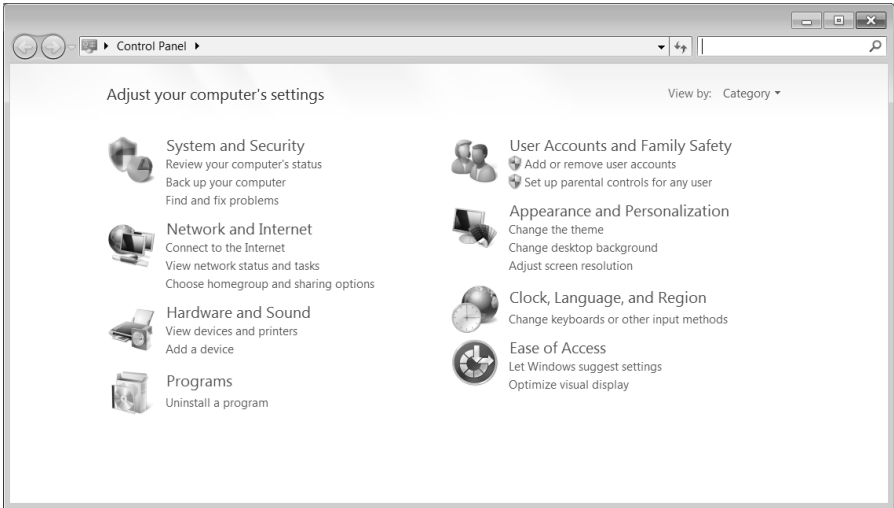
The User Account Control contributes to the prevention of unauthorized changes to the notebook.

A window with the message “**Do you want to allow the following program to make changes to this computer?**” will appear as soon as you carry out an unauthorized change.

- Click on **Continue**, in order to continue the procedure.
- Click on **Cancel**, in order to end the procedure.

# Windows® 7 – Control Panel

You can change Windows settings using the control panel. The settings control almost everything relating to Windows displays and functionalities, and they enable you to organise Windows according to your requirements.



When you first open the **Control Panel**, a few of the most frequently used elements of the Control Panel are displayed by category.

For further information on any element in the Control Panel category view, hold the cursor over the symbol or category name and read the pop-up display text.

To open one of these elements, click on the associated symbol or category name.

For a few of these elements, a list, with executable tasks will open, with a selection of individual Control Panel elements.

Searching for the desired control elements may be effected in the following ways:

- Enter a word or expression in the search field.
- Click on **Large Icons** or **Small Icons** under **Display Settings** to display a list of all Control Panel elements.



# Windows Media Center

The Windows Media Center is the platform for your individual home entertainment in Windows®7. You will be able to record television, TV broadcasts, DVDs and music, look at photos and much more by a remote (optional) or by a click of the mouse, with the Windows Media Center.

## Information

The support of the functions depends on the hardware equipment of the notebooks. For example, the TV function requires a TV tuner.

You will start your individual entertainment as follows:

1. Turn on your notebook.
2. Click on **Start** .
3. Click on  **Windows Media Center**.

An overview of the Windows Media Center functions is below:

Main menu	Sub-menu
TV + Films	<b>Recordings</b> You will have the possibility of recording broadcasts if you connect a TV tuner. You can play back the broadcasts recorded, delete them or burn them on external media through this Menu point.
	<b>Play back DVD</b> You will play DVDs through this Menu point.
	<b>Set up TV</b> You will have the possibility of configuring the TV signal here, if you have an external TV tuner available.
Online Media	<b>Programmes</b> This library of programmes offers a listing of various online media. You will call up content through the Internet, from the online video library, through news portals to the music shop, by means of the online media. An existing Internet connection is the requirement for the use of this function.

Main menu	Sub-menu
<b>Tasks</b>	<b>Settings</b> Adapt the Windows Media Center to your requirements and needs here. For example, make the settings for the protection of children here.
	<b>Stand by</b> You will not only close the Windows Media Center but you will be able to put the whole operating system in stand-by through this sub-menu. Pay attention that all applications have been already closed before putting the system into stand-by.
	<b>Burn CD/DVD</b> Call up your burning software to start a burning process through this sub-menu
	<b>Synchronising</b> If you connect an external device, such as an MP3 player or a digital camera; you will be able to synchronise the respective data to an external device with the notebook through this sub-menu.
	<b>Extension set-up</b> You will be able to set up a Windows Media Center extension by means of this sub-menu. You will be able to access the data on your notebook by means of a cable or wireless network.
	<b>'Only media'</b> You will switch to the full image of the Media Center by means of this sub-menu.
<b>Images + Videos</b>	<b>Library of images</b> All the images stored in your notebook will be located in the library of images. Start the playback in a slide show here.
	<b>Play back everything</b> Select ' <b>Play back everything</b> ', to start the playback of a slide show directly.
	<b>Video library</b> All the videos stored in your notebook will be located in its video library.

Main menu	Sub-menu
<b>Music</b>	<p><b>Music library</b></p> <p>All the music titles stored in your notebook will be located in the music library. You will be able to start the selected playback of an album, an artist or a selected title here.</p>
	<p><b>Play back everything</b></p> <p>You will start the playback of all the files stored in your music library by means of this sub-menu.</p>
	<p><b>Radio</b></p> <p>You will have the possibility of listening to a radio broadcaster and to administrate it, if you have external radio tuner hardware available.</p>
	<p><b>Search</b></p> <p>You will be able to search for music titles, composers, artists, albums, etc. in a targeted way by means of this sub-menu. The search will start as soon as you have entered the first letters.</p>

# Installation of Software

## Note

If your operating system is configured so that the installation procedure accepts only signed drivers (default) and software an information screen will appear.

The software included in delivery is already pre-installed in the factory.

## Attention!

You may find that during the installation procedure important files may be changed or even cancelled. To avoid further problems in using older files after an installation, make sure you safeguard your hard disk. See page 81 for further information regarding data backup.




## How to Install your Software

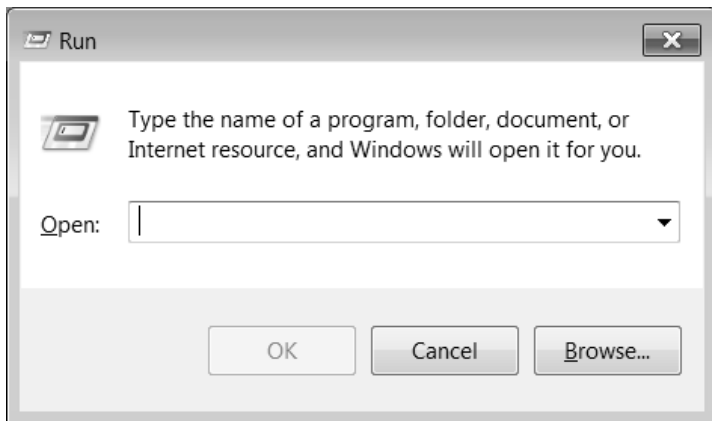
Please follow the instruction of the software vendor. We will describe a **typical** installation. Once you insert a CD, the installation menu is started automatically.

## Note

If the automatic start does not work, it is likely that the so-called **Autorun** function has been deactivated. Read the respective chapter in Windows Help on how to activate this function.

An example for the manual installation **without** the autorun function:




1. Click on **Start** .
2. Click on **▶ All Programs**.
3. Open the  **Accessories** program point.
4. Select the item  **Run**.
5. Now enter the letter of the CD-ROM drive followed by a colon and the program name setup:



6. Click on **“OK”**.
7. Follow the instruction given by the program.

## Software Uninstallation

In order to remove installed software from your notebook, follow the next steps:

1. Click on **Start** .
2. Click on  **Control Panel**.
3. Then select the  **Programs** option.
4. Select the respective program, start the uninstallation and follow the instructions on the screen.

# Windows Activation

Microsoft is committed to the protection of intellectual property rights and the reduction of software piracy. Therefore Windows® 7 contains software-based product activation technology. Your copy of Windows® 7 has already been **activated for your notebook**.

Product activation is needed if some components of your notebook have been replaced or you use a non-authorized BIOS. If necessary you can activate Windows® 7 as often as requested.

You will probably need to activate Windows® 7 by telephone even if Internet Activation is available. This is due to the pre-activated SLP version which runs with a special Product-ID. However, activation needs your unique Product ID which can be found on the **Certificate of Authenticity** sticker on your notebook housing. When you call, please inform your agent that you are running an OEM-(SLP) version of the software.

## Product activation on your Notebook

In few cases it may still be required to activate Windows® 7. If activation via the **internet** is acknowledged with an error message you should perform the following steps.

1. Please select the **telephone activation** and click until the related screen appears.
2. Now click on **Change Product Key**. A new window appears. Enter the product key. This is located on the **Certificate of Authenticity (COA)**, on the computer's casing.
3. Acknowledge your entry and follow the instructions on the screen. Notify your Microsoft consultant, if necessary, that you have purchased an OEM license with your computer.



## The BIOS Set-up-Program

In BIOS setup (Basic Configuration) there are a number of configurable parameter settings available for your notebook. For example, you can change the operating mode of the interfaces, security features or power management.

### Warning!

The notebook is factory pre-set to guarantee optimum operation. Only modify the parameters if necessary and if you are familiar with the configuration options.

## Running the BIOS Set-up

You can only run the BIOS configuration program at system start-up. If the notebook has already started, power it down and then up again. Press the **F2** key in order to start the BIOS-SET-UP.

# BullGuard Internet Security

The BullGuard Internet Security Package is a combination of the currently most up-to-date PC security technologies on the market and thus offers you 24-hour optimum protection.

BullGuard is already installed, so that additional installation will not be necessary. If you nevertheless have to carry out an installation (e.g. after system restoration), you will find the software package on the application/support disc supplied with the machine.

BullGuard Internet Security consists of the following security components:

- **Antivirus**  
The centrepiece of any serious PC security application, the Antivirus application screens your e-mails, and scans your hard drives for viruses and malware. The BullGuard Antivirus combines the highest update frequency in the business with a no-nonsense user-interface.
- **Antispyware\***  
BullGuard Antispyware protects your PC from all known kinds of spyware and adware by searching and cleaning files, registry keys, processes and cookies, protecting you from identity theft and the loss of personal information.
- **Spamfilter\***  
The BullGuard Spamfilter will protect you from annoying spam and potentially costly phishing attempts - a key tool in keeping your Inbox free from unsolicited mail.
- **Backup\***  
Backing up your files has never been easier with both local and online backup. Not only can you customise the size of your online backup drive to suit your needs - once uploaded, you can access these files from any computer connected to the internet anywhere in the world!
- **Support\***  
BullGuard Support is a key component in all BullGuard products. Assistance with all security related questions available to all users directly from the application. No FAQ, no automated response – real people and live help.

## \*Information

The **Antispyware, Spam filter, Backup and Support** components will only be released at the free registration and will be deactivated after the expiry of 90 days.

Procure a BullGuard subscription through the internet link given below, in order to be able to continue to use this module.

The BullGuard Internet Security Package will be updated with the most up-to-date virus information for 90 days after the **free registration**.

The registration window will only appear after your notebook has been restarted. You will register by entering your email address.

**Note**

Keep your password in a secure place.

The antivirus software will continue to run after the expiry of 90 days, but it will no longer be updated, so that your notebook will not be protected against new viruses.

The purchase of various subscriptions through BullGuard is possible in order to always receive the most up-to-date information and updates.

A subscription will be purchased on the internet and carried out without complications. An additional release or the entering of a licence is not necessary. Neither changes nor additional settings will have to be made.

The release will take place automatically after the purchase of a subscription.

Read the information about this on the internet at:

[https://www.bullguard.com/buy\\_new.aspx?](https://www.bullguard.com/buy_new.aspx?)

**Note**

The operating system and anti-virus software are automatically updated when the first online connection is made. These processes usually take a few minutes, during which time the operating speed of the computer may be affected although this is only noticeable on initial start-up.



# Chapter 4

## First Aid

Subject	Page
Data and System Security.....	81
System Restore.....	82
FAQ.....	87
Customer Service .....	88
Upgrades and Repairs .....	93
Recycling and Disposal .....	94



# Data and System Security

The programs described below are part of your Windows operating system. You can find additional information on these programs in the Windows Help file. Please also read the notes on page 4.

## Data Security

Back up data regularly on external media such as a CD-R or CD-RW. Windows offers **Backup Status and Configuration**.

This program is found in **Accessories** ⇒ **System Tools** within the Start menu. You should make a backup disk with all your passwords and the operating system's original configuration.

## Maintenance Programs

You can avoid some hardware and software errors with the help programs such as **Disk Defragmenter** and **Disk Cleanup**. The help program **System Information** can also be helpful as it gives you detailed information about your system configuration. You can also find these programs in **Accessories** ⇒ **System Tools** too.

# System Restore

Windows® 7 provides a useful function (**System Restore**) enabling the storage of the so-called **Recovery points**.

The system remembers the current configuration as a snapshot and returns to this, if necessary. The advantage is that an unsuccessful installation can be cancelled.

**Recovery points** are created automatically by the system, but they can also be set manually.

You can determine and configure yourself the maximum memory taken up by this. You find this program in the program file under **Accessories** ⇒ **System Tools**.

We recommend setting a **recovery point** before installing new software or drivers. At this point if the system does not run properly this recovery point should enable you to return to a workable configuration without deleting newly created documents. In the next paragraph you will find your options for the repair of an incorrect installation.

## Correction

Windows® 7 includes various functions ensuring that the PC as well as the installed applications and devices work correctly.

These functions assist you in solving the problems which might occur by adding, deleting or replacing files required for the functionality of the operating system, the applications and devices. The recovery function or functions you use depend on the type of occurring problem or error. For detailed information refer to the Windows help.



## Windows® Update

Windows Update is the online updating of Windows. Use Windows Update to download elements such as security updates, important updates, the newest help files, drivers and Internet products from the Internet.



The website is regularly augmented by new content, so that you can download the newest updates and error corrections at any time, to protect the notebook and guarantee its functioning.

Windows Update will search through the notebook and provide a list of individual updates especially for the configuration of your notebook.

Each update that Microsoft regards as important for the operation of the operating system, programs or hardware components will be classified as an “important update” and automatically selected for installation for you.

Important updates will be provided to remove known problems and to protect the notebook against known security risks.

Carry out four simple steps, to download the updates needed and to keep your computer on the current status of technology:

1. Click on **Start** .
2. Click on ► **All Programs**.
3. Open  **Windows Update**.
4. Click on **Check for update**.
5. Click on **Add** to select the desired update and to add it to the updates to be installed, while you are searching through the available updates in each category. You can also read a complete description of each individual element by clicking on the **Read further** Link.
6. Click on **Check and install updates**, when you have selected all the desired updates, and then click on **Install now**.

## Windows Update Information for Data Security

Windows Update needs certain information about the respective notebook, so that a suitable list with updates can be provided for you. This information will include the following:

- Version number of the operating system
- Version number of Internet Explorer
- Version numbers of additional software programs
- Plug & Play identification key of the hardware devices

Windows Update will stand up for the protection of your private data and will not record your name, address, email address or other forms of personal data. The information collected will only be used during the time that you are visiting the website. It will also not be stored.

The update can only be executed via the Internet. Ensure that you are on-line with your notebook when downloading the updates.

# System Restore

If your system is not functioning properly, you should use the Application Support Disc to restore your system.

## Limits of the Recovery

- Changes made to the original configuration (RAS, Desktop or Internet settings) and installed Software will be ignored by this Recovery and will not be reloaded.
- Driver Updates or hardware installed by you will be ignored by this Recovery.

### Warning!

All data on drive C will be erased. If necessary, backup all required data on drive D. (You **must** pay attention to the information of pages 4 and 81).

This recovery will reset your system to **its condition at delivery**. Printer installations or other additional software must be reinstalled.

# Carrying out a Restore











1. Remove any mass storage devices you may be using (memory cards, USB sticks, etc.).
2. Switch on the notebook.
3. Press the corresponding key when you see the message "**Press F11 to run recovery**" or "**Press F12 to run recovery**".  
After a few seconds, the message "**Windows is loading files**" will appear. Wait until the files are loaded. The "**Power Recover**" menu will then appear.
4. Select the language of the restoration menu.
5. Click on "**Next**".
6. You may now choose between two forms of restoration:
  - **Restore to HDD – no backup of user data**  
All data on the notebook are irretrievably erased, restoring delivery condition.
  - **Restore to HDD – with backed up user data**  
Delivery condition is restored and all user data under **C:\User** are **preserved**.

## **Warning!**

When using the option **with backed up user data**, the restoration procedure takes a long time. Data are only preserved if they are located in the C:\user folder. All other data will be erased. For this reason, you must perform regular backups on external data carriers. We will not be liable for data loss and/or consequential damages.

7. Click on **Next** and follow the further instructions, which will appear on the screen, to restore the delivery condition.

# FAQ – Frequently Asked Questions

-  Do I still have to install the enclosed discs?
-  No. Basically all programs are already preinstalled. The discs are only intended as backup copies.
-  Where can I find the drivers necessary for my Notebook?
-  The drivers are on the second partition of the hard drive, in the Drivers and Tools directories.
-  What is the Windows activation?
-  Your operating instructions include a chapter about this subject.
-  When do I have to activate Windows?
-  Your software has been preactivated in the factory. An activation will only be required, if ...
  - ... several components are replaced by others.
  - ... you installed a new motherboard.
  - ... a different BIOS version has been installed.
  - ... you install the software on to another computer.
-  When is the recovery of the factory setting recommended?
-  This method should be chosen as the last resort. Read chapter “**System Restore**” concerning the possible alternatives.

# Customer Service

## Localize the Cause

Errors can have simple causes, but sometimes they are caused by faulty equipment. We would like to give you some tips to help solve common problems. Should these instructions not lead to success, please feel free to contact us.

## Check Cables and Connections

Visibly check all cables and connections. Should all lights be off, check whether all equipment is supplied with power.

- In battery mode, connect the notebook to the power adapter and ensure that the battery is charged up.
- If you are operating the notebook with the power adapter, check the electrical socket, power cord and all switches in the circuit of the electrical socket.
- Switch off the notebook and check all cable connections. Check the connections to peripherals. Do not exchange cables, even though they may look similar. The polarity in the cables may be different. When it is confirmed that the notebook has power and all connections are correct, turn the notebook on again.

Frequent use of the programs **Disk Defragmenter** and **Disk Cleanup** will help you to avoid problems with your operating system.

The tool "**System Information**", available in the program folder "**System Tools**" is also very useful.

# Errors and Possible Causes

## The screen is black:

- This error can have different causes:
  1. The operational display (On /Off switch) does not shine and the notebook is busy with 'file swapping'.  
**Solution:**  
Press the On /Off switch.
  2. The sleep LED is flashing. The notebook is in the sleep mode.  
**Solution:**  
Press the On /Off switch.
  3. The background lighting has been deactivated with the **Fn+F4** shortcut.  
**Solution:**  
Press any key to switch on the background lighting again.

## The notebook switches itself off during operation.

- The battery could be empty. Connect the notebook to the AC adapter and charge the battery.

## The notebook cannot be switched on.

- Try using the notebook on battery power and check whether it is correctly inserted and charged.

## Incorrect time and date display.

- Click the time display in the task bar and set the correct values.

## No data can be read from the optical drive.

- Check whether the disc is correctly inserted.
- Is the drive displayed in Explorer? If yes, test another disc.

## The touchpad is not functioning.

- Press the **Fn + F3** key combination in order to activate the touchpad.

## The WLAN connection is not functioning.

- Using the key combination **Fn+F8** you can enable or disable the wireless LAN function.

## The webcam is not functioning.

- Press the **Fn + F6** key combination in order to activate the webcam.

## Additional Support

If the suggestions in the above section have not solved your problem, please contact customer care and we will attempt to help you solve the problem. Before you call, however, please have the following information available:

- How is your computer configured?
- What additional peripherals do you use?
- What messages, if any, appear on your screen?
- What software were you using when the error occurred?
- What steps have you already undertaken to solve the problem?
- Have you upgraded or removed drivers or hardware?
- Can you manually repeat the problem?
- If you have been given a customer number previously, please have this available.

## Driver Support

This notebook has been extensively tested in our laboratories with a large number of compatible devices. It fulfils all required standards and complies with the standard “Designed for Windows”, which certifies utmost compatibility. However, the software drivers for individual components are updated from time to time. This is a regular process provided by the manufacturer to mend possible compatibility problems that may occur with components (e.g., programs or hardware) that were not tested at the time of your notebook’s manufacture.



## Transporting the Notebook

Please use the following guidelines when transporting the notebook:

- Switch off the notebook. This will prevent damage to the hard disk. When the notebook is turned off, the hard disk heads are moved into a safe area.
- Wait until the Notebook has reached ambient (room) temperature before connecting it to the power supply. Drastic variations in temperature and humidity can create condensation within the Notebook and may cause it to short-circuit.
- Close the notebook and ensure that the cover locks shut.
- Always use the notebook carrying case. This helps to protect the notebook from dirt, moisture, jolts and scratches.
- Should you need to ship your notebook, always use the original packaging and make certain the shipper knows the contents contain fragile electronic equipment.
- Fully charge your battery and any spare batteries immediately before a long journey.
- Enquire about the electricity and communication provision at the location before a journey.
- Acquire the necessary adapter for electricity or communication (modem, LAN, etc.), if necessary, before starting your journey.
- Put the battery into the packaging separately when despatching the notebook.
- It is recommended to send the notebook and all magnetic storage media (floppy disks, external drives) through the x-ray device (the device into which you put your bags), when you are passing through the baggage check at airports. Avoid the magnetic detector (the construction, through which you walk) or the magnetic rod (the manual device of the security personnel), because they could destroy your data, among other consequences.

# Maintenance

## Warning!

There are no user-serviceable or user-cleanable parts inside the notebook housing. Never open the notebook housing.

Following these measures can extend the lifetime of your notebook:

- Before cleaning, always remove the power adapter plug and all connecting cables.
- Only use a damp, lint-free cloth to clean the notebook.
- Do not use any solvents, corrosive or gaseous cleaning agents.
- Dust or grease on the touchpad will impair its sensitivity. Remove dust or grease on the surface of the Touchpad with a strip of sticky tape.
- Dust, which will close the cooling slots, can collect inside the laptop/notebook in the course of time. This will lead to an increase in the rotation of the ventilator and consequently also of the operating noise of your laptop/notebook. In addition, this can lead to overheating and malfunctions. Have the inside of the laptop/notebook cleaned by your Service Center or a professional for this reason.

## Care of the TFT Display

- Always close the notebook when not in use. Avoid touching or scratching the surface of the screen as it is easily damaged.
- Make sure that no water drops are allowed to remain on the screen. Water can cause permanent discoloration.
- Clean the screen with a dry, soft, lint-free cloth.
- Do not expose the screen to bright sunlight or ultraviolet radiation.
- The notebook and its packaging are recyclable.

## Note

Protective foil is on the surfaces to protect the device against scratching during production and transportation. Pull off all the foil after you have set up the device correctly and before bringing it into operation.

# Upgrades and Repairs

- Only a qualified Service Engineer should perform upgrades and repairs to your notebook.
- If you do not have the necessary qualifications, go to an appropriate Service Engineer. Please contact the Service Centre if you are experiencing technical problems with your notebook.
- Please contact our authorized Service Partners exclusively in the case of a necessary repair.

## Notes for Service Engineers

- Before opening the housing, disconnect the notebook from all power sources and remove any connecting cables. If the notebook has not been disconnected from the power outlet before being opened, there is a danger of severe electric shock. There is also a risk of damage to the components.
- Internal components of the notebook may be damaged by electrostatic discharge (ESD). Perform system upgrades and changes in an ESD-protected work area. If no such work area is available, wear an antistatic wrist strap or touch a highly conductive metal object. Your service centre can repair damage sustained by inappropriate handling for a fee.
- Use only original spare parts.

## Notes on Laser Radiation

- Laser devices of Laser Class 1 to Laser Class 3b may be used in the notebook. Where the notebook housing remains closed, the device meets the requirements of Laser Class 1. By opening the notebook housing you will gain access to laser devices of up to Laser Class 3b.
- The CD-ROM/CD-RW/DVD/DVD-RW drive contains no user-serviceable parts. Only the manufacturer should perform repairs to the CD-ROM/CD-RW/DVD/DVD-RW drives.

When removing and/or opening laser devices, the following guidelines must be observed:

- DO NOT look into the laser beam, even while wearing optical protection.
- DO NOT allow yourself to be exposed to the laser beam. Avoid exposure of the eyes or skin to direct or stray radiation.

# Recycling and Disposal



## Device

At the end of its life, the appliance must not be disposed of in household rubbish. Enquire about the options for environmentally-friendly disposal



## Batteries

Do not dispose of used batteries in the household rubbish! They must be deposited at a collection point for used batteries.



## Packaging

To avoid damage during transport, the Notebook is stored in a packaging. Packaging is produced mostly from materials which can be disposed of in an environmentally friendly manner and be professionally recycled.

Should you have any questions concerning the disposal please contact your dealer or our service.

## Batteries and Proper Treatment

Batteries may contain combustible materials. By misuse, this may cause battery **leakage, heat, explosion or ignition**, bringing about **injury or damage** to the device. Please observe strictly the following matters:

### Warning!

There is a lithium battery on the motherboard. Lithium batteries are **hazardous waste** and need to be disposed of properly. If necessary, we will take back your used CMOS lithium battery.

- KEEP CHILDREN AWAY from batteries. If by any chance, the batteries are swallowed, consult a doctor immediately.
- DO NOT CHARGE batteries (except rechargeable batteries).
- DO NOT FORCIBLY DISCHARGE batteries.
- DO NOT SHORT-CIRCUIT batteries.
- DO NOT HEAT or DISPOSE OFF IN FIRE.
- DO NOT DISASSEMBLE or DEFORM batteries. Your hands and fingers may be injured, or the liquid of the battery may get into your eyes or adhere to your skin. If this happens, rinse with a large quantity of water immediately and consult a doctor.
- DO NOT expose batteries to strong impact by dropping or throwing the batteries.
- DO NOT reverse the positive (+) and negative (-) terminals to avoid short-circuit.
- Do NOT MIX used and new or different types of batteries together. Your equipment may not operate properly. In addition, the battery exhausted first may be excessively drained (over-discharged).
- REMOVE the used batteries from the device PROMPTLY.
- REPLACE ALL BATTERIES with new batteries of the same type at the same time.
- INSULATE THE TERMINAL of the batteries with tape or the like at the storage or disposal of the batteries.
- DO NOT dispose of rundown batteries in your household rubbish! Respect the environment and throw them in the specific containers for separate collection. If necessary, turn to your reseller or to our service assistance. Thank you!



# Chapter 5

---

## Appendix

<b>Subject</b>	<b>Page</b>
Information about Conformity .....	99
Index.....	102





# Information about Conformity

The device fulfils electromagnetic compatibility and electricity safety requirements.

Your device complies with the basic requirements and the relevant guidelines of the 2004/108/EU EMV Guidelines [electromagnetic compatibility] and the 2006/95/EU Guideline for low voltage devices.

This device fulfils the basis requirements and the relevant regulation of the Ecodesign Guideline 2009/125/EG (Commission Regulation 1275/2008).Electromagnetic Compatibility.

## ISO 13406-2 Class II

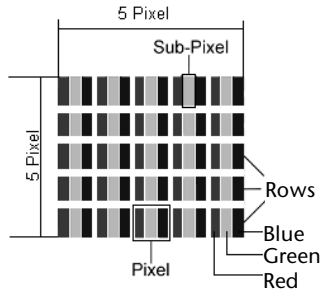
Active matrix LCDs (TFT) with a resolution of **1366 x 768** pixel, which are in turn composed of three sub-pixels each (red, green, blue), contain about **3.14** million addressable transistors. Because of this very high number of transistors and their extremely complex production process occasionally defective or incorrectly addressed pixels or sub-pixels may occur.

There have been several attempts in the past to define the acceptable number of defective pixels. But this can be difficult and varies widely between different manufacturers.

We, therefore, adhere to the clear and strict requirements of **ISO 13406-2, class II**, for the warranty handling of all TFT display products. These requirements are summarized below.

Within ISO-standard 13406-2 the general requirements regarding pixel defects are defined. Pixel defects are classified into three failure types and four failure classes. Each individual pixel is made up of three sub-pixels in the primary colours (red, green, blue).

## Pixel structure



### Types of Pixel Failures:

- Type 1:  
A constantly lit pixel (a bright, white spot), even though it is **not** addressed.  
A white pixel is caused when all three sub-pixel are lit.
- Type 2:  
A pixel that does not light up (dark, black spot), although it is addressed
- Type 3:  
Abnormal or defective red, green or blue sub-pixels.  
(E.g. constantly lit with half the brightness, one colour is not shining, blinking or flickering, but not belonging to Type 1 or 2 Pixel Failures)

In addition: A cluster of type 3 (= 2 or more defective sub-pixels in an array of 5 x 5 pixel). A cluster is an array of 5 x 5 pixel (15 x 5 sub-pixel).

### ISO 13406-2, Class II

Resolution	Type 1	Type 2	Type 3	Cluster Type 1, Type 2	Cluster Type 3
1024 x 768	2	2	4	0	2
1280 x 854	3	3	6	0	3
1280 x 1024	3	3	7	0	3
1366 x 768	3	3	7	0	3
1400 x 1050	3	3	8	0	3

### Example:

An. 17" (approx. 44 cm) - SXGA-display consists of 1280 horizontal and 1024 vertical picture dots (pixel), which amounts to a total of 1,31 million pixels. Based on one million pixels this translates into a factor of about 1.31.

Class II type failure consequently allows for three defects each of type 1 and type 2 and 7 defects of type 3 and 3 cluster of type 3.

These cases are normally not covered by warranty.

If the number of failures exceeds the figures of any category mentioned above then this may be covered by the warranty.

# FCC Compliance Statement

This equipment has been tested and found to comply with the limits for a Class B digital device, pursuant to Part 15 of FCC Rules. These limits are designed to provide reasonable protection against harmful interference in a residential installation. This equipment generates, uses, and can radiate radio frequency energy and, if not installed and used in accordance with the instructions, may cause harmful interference to radio communications. However, there is no guarantee that interference will not occur in a particular installation. If this equipment does cause harmful interference to radio or television reception, which can be determined by turning the equipment off and on, the user is encouraged to try to correct the interference by one or more of the following measures:

- Reorient or relocate the receiving antenna.
- Increase the separation between the equipment and receiver.
- Connect the equipment into an outlet on a circuit different from that to which the receiver is connected.
- Consult the dealer or an experienced technician for help.

Changes or modifications not expressly approved by the party responsible for compliance could void the user's authority to operate the equipment. Shielded interface cables, if any, must be used in order to comply with the emission limits.

# Index

---

## A

All programs .....	21
Ambient Temperature .....	5
Appearance and Personalization ...	36
Autorun .....	72

---

## B

Batteries and proper treatment .....	95
Battery operation .....	29
Battery power .....	31
Charging .....	31
Checking the battery level .....	32
Discharging the battery .....	31
Battery Operation.....	10
Removing.....	30
Battery Power.....	31
BIOS Setup-Program .....	75
BIOS Utility	
Running .....	75
BullGuard Internet Security .....	76

---

## C

Cabling .....	8
Card Reader .....	58
Care of Displays .....	92
Carrying out a Restore.....	86
CD/DVD-Rewriter.....	50
CD-blanks .....	50
CD-ROM .....	47
Charging the battery .....	31
Checking the battery level.....	32
Connectors	
External monitor.....	37
Power Socket .....	15
Sound card.....	51
USB .....	60
Control panel.....	68
Disk Management .....	45
Customer service.....	88

---

## D

Data and system security .....	81
Data Entry .....	40
Data security .....	4, 81
Directories.....	46
Disc-Drive .....	47
Discharging the battery.....	31
Discs	
Loading.....	47
Removing blocked discs .....	48
Display	
Appearance and personalization	36
Opening and Closing the	
Display .....	35
Screen resolution .....	35
Dolby® Advanced Audio.....	53
Driver Support .....	90
DVD-Drive.....	47

---

## E

ECO function	
Making settings.....	34
Emergency Ejection of a blocked	
disc .....	48
eSATA/USB Port.....	61
Extended Desktop .....	39
External monitor .....	37

---

## F

FAQ.....	87
Fast Ethernet-Network.....	54
FCC Compliance Statement .....	101
Frequently asked questions .....	87

---

## H

Hard drive .....	45
HD .....	<i>See Hard drive</i>

---

## I

Icons .....	22
-------------	----

Indicators	
Battery LED.....	17
Capital Lock .....	17
Num Lock.....	17
Installation of Software.....	72
Introduction.....	3
ISO 13406-2 Class II .....	99
<hr/>	
<b>K</b>	
Kensington-lock .....	62
Keyboard .....	40
<hr/>	
<b>L</b>	
Laser radiation.....	93
License agreement .....	20
<hr/>	
<b>M</b>	
Main operation .....	28
Maintenance .....	92
Care of the TFT Display.....	92
Transporting the notebook.....	91
Maintenance programs .....	81
Memory cards	
Inserting.....	58
Removing.....	58
Memory Stick.....	58
MMC.....	58
Mouse.....	43
<hr/>	
<b>N</b>	
Network.....	54
Fast Ethernet-Network.....	54
Troubleshooting.....	57
What is a network? .....	54
Wireless LAN.....	55
<hr/>	
<b>O</b>	
On/Off button.....	27
Optical Drive.....	47
<hr/>	
<b>P</b>	
P1 key .....	42
Power Management.....	33
Power supply .....	7
Battery operation .....	29
Main operation .....	28
Power Supply	
Hibernate Mode .....	33
Sleep Mode.....	33
Product activation on your notebook .....	74
Program bar.....	21
<hr/>	
<b>R</b>	
R&TTE.....	9
Recycling and disposal .....	94
Removing the Battery.....	30
Repairs .....	93
Running the Bios Setup.....	75
<hr/>	
<b>S</b>	
Safety instructions.....	3
Care of the display .....	92
Data Security.....	4
Maintenance .....	92
Ambient Temperature .....	5
Battery Operation.....	10
Cabling .....	8
Power supply .....	7
Set-Up location .....	4
Touch Pad .....	9
Upgrades and Repairs .....	93
Scope of delivery.....	13
Screen resolution .....	35
SD.....	58
Secure Digital.....	58
Securing the Notebook	
Startup Password .....	62
Service Engineers .....	93
Setting the Recording level .....	53
Set-Up Location .....	4
Sleep Mode.....	33
Software .....	63
Software uninstallation .....	73
Sound card .....	51
External audio ports .....	52
Setting the Recording level.....	53
Standards	
FCC Compliance Statement ....	101
Start button .....	21
Support .....	90

Suspend to Disk .....	33
System Restore.....	82, 85

---

**T**

The Card Reader.....	58
Touch Pad .....	9
Touchpad.....	43
Two-finger gesture.....	44
Transport .....	91
Troubleshooting .....	82
Errors and possible causes .....	89

---

**U**

Universal Serial Bus .....	60
Upgrades and Repairs .....	93
Using a safety lock.....	62

---

**V**

Views

Audio Out .....	15
Device Indicators .....	15
Disc Eject Button .....	14
e-SATA/USB Port.....	16
HDMI Connector .....	15
Kensington lock .....	15
Keyboard.....	14
LAN Port.....	16
Multimedia Card Reader.....	15

Optical Drive.....	16
Power ON/OFF.....	14
Power socket.....	15
TFT Display .....	14
Touchpad.....	14
USB-Port.....	15
VGA .....	16
Webcam.....	14

---

**W**

Webcam.....	59
Windows activation.....	74
Windows Media Center.....	69
Windows <sup>®</sup> 7	
User account control.....	67
Battery device management.....	64
Control panel.....	68
Getting started .....	66
Help and Support .....	65
Homegroup .....	65
Improved Desktop .....	64
Improved taskbar .....	63
Jump lists .....	63
News.....	63
Windows <sup>®</sup> Desktop.....	21
Windows <sup>®</sup> Update.....	83
Wireless LAN .....	55
Working in Comfort .....	6