

MEDION®

Instruction manual



61 cm / 24" LED Backlight Monitor
MEDION® AKOYA® P55664 (MD 20664)

Contents

- 1. **Notes on how to use these instructions** 3
 - 1.1. Symbols and key words used in these instructions3
- 2. **Proper use** 3
- 3. **Package contents**..... 3
- 4. **Safety instructions**..... 4
 - 4.1. Operating safety4
 - 4.2. Installation location4
 - 4.3. Repairs5
 - 4.4. Environmental temperature5
 - 4.5. Power supply5
- 5. **Notes on conformity** 6
- 6. **Initial operation** 7
 - 6.1. Installation7
 - 6.2. Preparations at your PC7
 - 6.3. Supported monitor settings8
 - 6.4. Supported settings in video mode8
 - 6.5. Monitor settings under Windows® 7.....9
 - 6.6. Monitor settings under Windows® 8.....9
 - 6.7. Rear connections10
 - 6.8. Connecting the monitor11
 - 6.9. Setting up the monitor12
- 7. **Operating elements**..... 14
- 8. **Setting the screen**..... 15
 - 8.1. Using the OSD menu15
 - 8.2. The OSD menu15
- 9. **Power-saving options**..... 17
- 10. **Customer service** 17
 - 10.1. Troubleshooting17
 - 10.2. Do you need more help?18
- 11. **Cleaning**..... 18
- 12. **Disposal** 18
- 13. **Pixel defects on screens** 19
- 14. **Technical data** 20
- 15. **Legal notice** 21

1. Notes on how to use these instructions



Please be sure to read these operating instructions carefully and follow all instructions given. This guarantees reliable operation and a longer life expectancy for your monitor. Always store these instructions near your monitor. Keep the operating instructions so that you can pass them on with the monitor if you sell it.

1.1. Symbols and key words used in these instructions

	DANGER! <i>Observe these instructions to avoid an electric shock.</i> <i>Risk of fatal injury!</i>
	WARNING! <i>Please observe to avoid injury!</i>
	CAUTION! <i>Please observe instructions to avoid damage to property.</i>
	IMPORTANT! <i>Additional information on using the device</i>

2. Proper use

- This TFT monitor is designed exclusively for the playback of video and audio signals from external devices, such as computers, whose connections and screen resolutions match the specified technical data of the TFT monitor. Any other use is deemed as improper.
- This device is intended for use in dry, indoor areas only.
- This device is intended for private use only. The device is not intended for use by companies in the heavy industry sector. Use under extreme environmental conditions may result in damage to the device.
- This device is not suitable for use with VDU workstations in accordance with §2 of the German VDU workstation regulation.

3. Package contents

Please check your purchase to ensure all items are included and contact us within 14 days of purchase if any components are missing. The following items are supplied with your monitor:

- Monitor
- VGA cable
- Audio cable
- Power cord
- Monitor stand
- Cable holder
- Documentation

4. Safety instructions

4.1. Operating safety

- This device is not intended for use by people (including children) with reduced physical, sensory or mental abilities or by those without experience and/or knowledge, unless they are supervised by a person responsible for their safety or they have been instructed in its use by that person. Children should be supervised to ensure they do not play with this device.
- Keep packaging material such as plastic film out of reach of children. There is a risk of suffocation if used improperly.
- Never open the monitor's casing (electrical shock, short circuit and fire hazard)! Do not attempt to modify the device yourself.
- Never insert any objects through the slots and openings into the inside of the monitor (electrical shock, short circuit and fire hazard)!
- The slots and openings on the monitor are for ventilation purposes. Do not cover these openings (overheating, fire risk)!
- Do not put any excessive pressure on the display. There is a risk that the screen may break.
- Caution! There is a risk of injury if the display is broken! Recover all broken pieces using protective gloves and send them to your Service Centre for proper waste disposal. Then wash your hands with soap because chemicals may have leaked out.
- To avoid damaging the screen, do not touch it with your fingers or sharp objects.

Contact customer services if:

- the power cable is burnt or damaged
- liquid has penetrated the monitor
- the monitor is not operating correctly
- the monitor has been dropped or the housing is damaged.

4.2. Installation location

- Keep your monitor and all connected devices away from moisture and avoid dust, heat and direct sunlight. Non-compliance with these instructions can lead to faults or damage to the monitor.
- Do not use the device outdoors because external elements such as rain, snow, etc. could damage it.
- Avoid exposing the device and the mains adapter to water droplets or spray and do not place any liquid-filled containers (vases or similar) on or next to the device or the mains adapter. Liquids penetrating the device may impair the electrical safety of the product.
- Do not place any open flames (candles or similar) on or near the device.
- Make sure that there is enough clearance from the sides of the furniture unit. Ensure a minimum clearance of 10 cm around the device for sufficient ventilation.
- Place and operate all the components on a stable, level and vibration-free surface in order to prevent the monitor from falling down.
- Avoid glare, reflections and excessive bright-dark contrast to protect your eyes and guarantee pleasant workstation ergonomics.
- Take regular breaks when working at your monitor to prevent tenseness and fatigue.

4.3. Repairs

- Repairs to your monitor should only be carried out by qualified specialists.
- if a repair must be carried out, please contact only our authorised service partner.

4.4. Environmental temperature

- The monitor can be operated at an ambient temperature of +0°C to +35°C with a relative humidity of < 80% (non-condensing).
- When switched off, the monitor can be stored at temperatures from -20°C to +60°C.



DANGER!

After transporting the monitor, wait until the appliance has reached room temperature before switching it on.

Large changes in temperature or fluctuations in humidity can cause moisture build-up within the monitor due to condensation. This can cause an electrical short-circuit.

4.5. Power supply



DANGER!

Even when the mains switch is off, some components of the device are live. In order to disconnect the power to your monitor or to completely isolate the device from voltage sources, remove the mains plug from the mains socket.

- Operate the monitor only at a 100–240 V~ 50/60 Hz earthed safety contact socket. Contact your electricity provider if you are not sure if the socket is earthed or not.
- For extra safety, we recommend using an overvoltage protection device to prevent your monitor from sustaining damage as a result of power surges or lightning strikes.
- To disconnect the power supply from your monitor, pull the mains plug from the power outlet.
- The power outlet must be close to the monitor and easy to access.
- To prevent non-permissible heating up, do not cover the mains adapter.
- The socket must be close to the monitor and easy to access.
- Position the cable so that it cannot be stepped on or tripped over.
- To avoid damaging the cable, do not place any objects on it.
- Please note: The standby switch of this device does not cut it off from the mains completely. The device also consumes power in standby mode. In order to disconnect the device completely from the power supply, pull the mains plug out of the power outlet.
- Keep the device at a distance of at least one metre from sources of high-frequency or magnetic interference (televisions, loudspeaker, mobile telephones, etc.) to avoid malfunctions and data loss.
- Despite the most modern production methods as a result of the highly complex technology, in rare cases there may be individual or multiple pixel drop-outs (dead pixels).

5. Notes on conformity

Medion AG hereby declares that product conforms to the following European requirements:

- EMC Directive 2004/108/EC
- Low Voltage Directive 2006/95/EC
- RoHS Directive 2011/65/EU.
- Ecodesign Directive 2009/125/EC (Commission Regulation 1275/2008)

However, this device is not equipped with any complete function for minimizing consumption in accordance with the eco-design directive. This function is generally defined or specified for this product category using the connected end device (Personal Computer).



This monitor is ENERGY STAR® compliant.

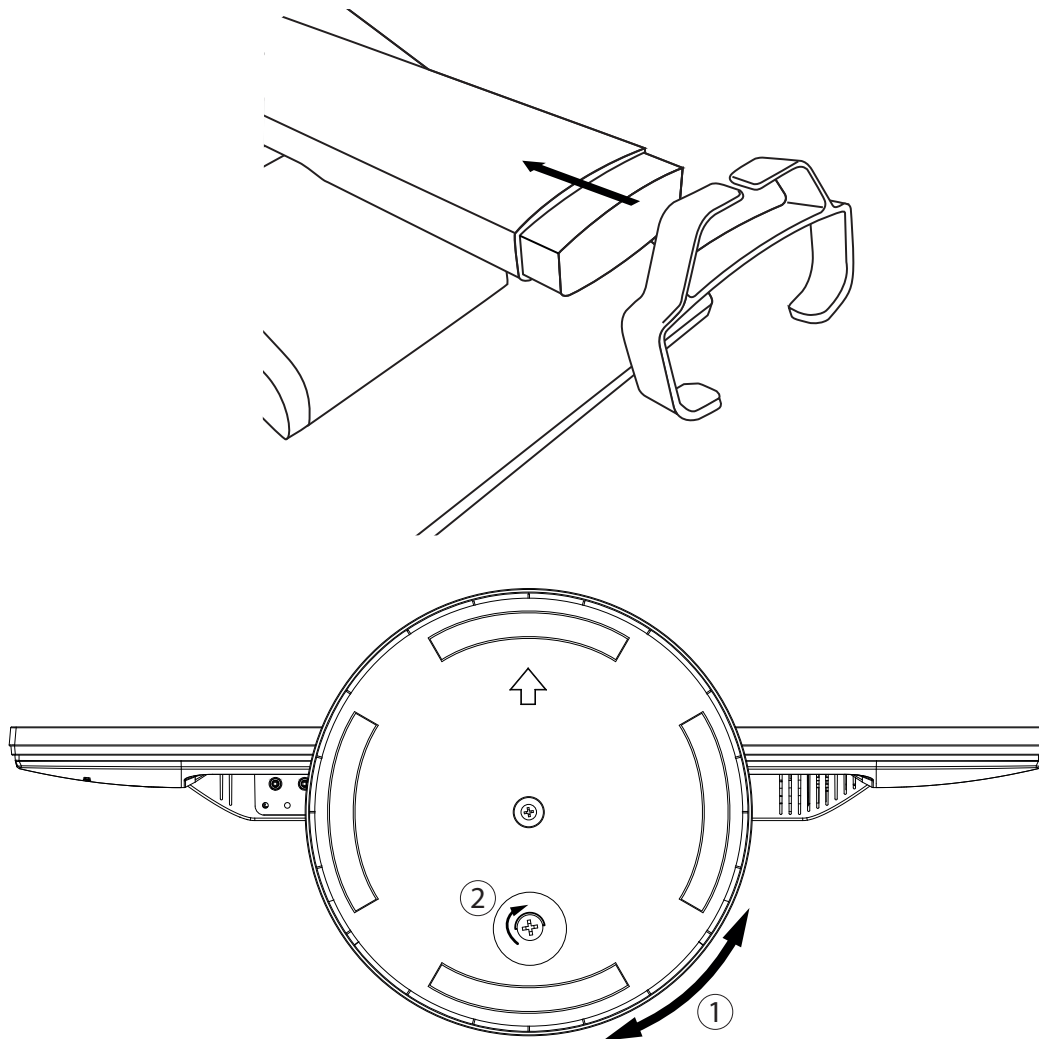
As an ENERGY STAR® partner, MEDION guarantees that this device complies with the ENERGY STAR® directives on optimising the power consumption.

6. Initial operation

6.1. Installation

Attach the monitor stand as shown in the illustration. Carry out this step before connecting up the monitor.

- ▶ Slide the cable holder onto the standing leg as illustrated.
- ▶ Then place the base onto the stand on the device. Ensure that the connecting piece fits into the recess on the device and the base clicks into place.
 - 1) Twist the base plate so that the opening for fixing the screw can be seen.
 - 2) Fix the screw in place and fold out the bracket.
- ▶ Then position the monitor with the arrow on the underside of the rotating base pointing towards the front so that the device can turn correctly in future.



6.2. Preparations at your PC

If you have been operating your computer with a CRT monitor, it may be necessary to make some adjustments. This is necessary if your previous monitor used settings for its operation that will not be supported by your new monitor. The monitor displays up to **1920 x 1080** pixels. This resolution corresponds to the physical resolution. Monitors achieve full image quality with the physical resolution. If you change to a display with different settings, the display may not, in certain circumstances, appear in the full screen area.

Distortions can also occur, especially for fonts.

Before you connect the new monitor, use your old PC monitor to set a resolution and image frequency that is supported by both monitors.

Then shut down the PC and connect the new monitor.

After rebooting the PC, you can adjust the monitor settings for the device as described.

6.3. Supported monitor settings

This monitor supports the following modes

Resolution	Horizontal frequency	Vertical frequency
720 x 400	31,47 kHz	70 Hz
640 x 480	31,47 kHz	60 Hz
640 x 480	35 kHz	67 Hz
640 x 480	37,8 kHz	72 Hz
640 x 480	37,5 kHz	75 Hz
800 x 600	35,15 kHz	56 Hz
800 x 600	37,8 kHz	60 Hz
800 x 600	48,0 kHz	72 Hz
800 x 600	46,87 kHz	75 Hz
832 x 624	48,67 kHz	75 Hz
1024 x 768	48,36 kHz	60 Hz
1024 x 768	56,48 kHz	70 Hz
1024 x 768	60,0 kHz	75 Hz
1152 x 864	67,0 kHz	75 Hz
1152 x 870	68,6 kHz	75 Hz
1280 x 768	47,0 kHz	60 Hz
1280 x 960	60,0 kHz	60 Hz
1280 x 1024	63,98 kHz	60 Hz
1280 x 1024	80,0 kHz	75 Hz
1440 x 900	56,0 kHz	60 Hz
1440 x 900	71,0 kHz	75 Hz
1400 x 1050	65,1 kHz	60 Hz
1600x 1200	75,0 kHz	60 Hz
1680 x 1050	65,0 kHz	60 Hz
1920 x 1080*	67,0 kHz	60 Hz

*Recommended resolution (physical)

6.4. Supported settings in video mode

480i/480p

576i/576p

720p

1080i/1080p

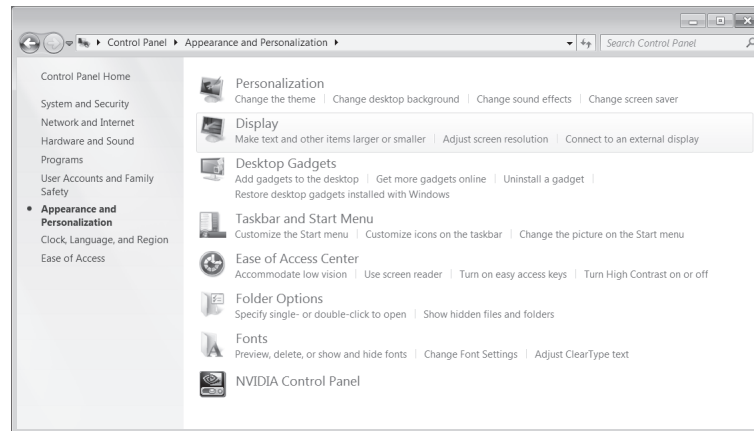
6.5. Monitor settings under Windows® 7

For Windows® 7, adjust the monitor settings in the Windows program “Appearance and Personalization”. The program can be started as follows:

- ▶ Right-click on the Windows desktop and left-click on “Customize”.

Or:

- ▶ Via Start ⇒ Control Panel ⇒ Appearance and Personalization by double-clicking the left mouse button.



- ▶ Choose the menu Display ⇒ Adjust screen resolution in order to adjust the resolution and frequency.
- ▶ You can also change the orientation of the screen here should you wish to work in portrait or landscape format.

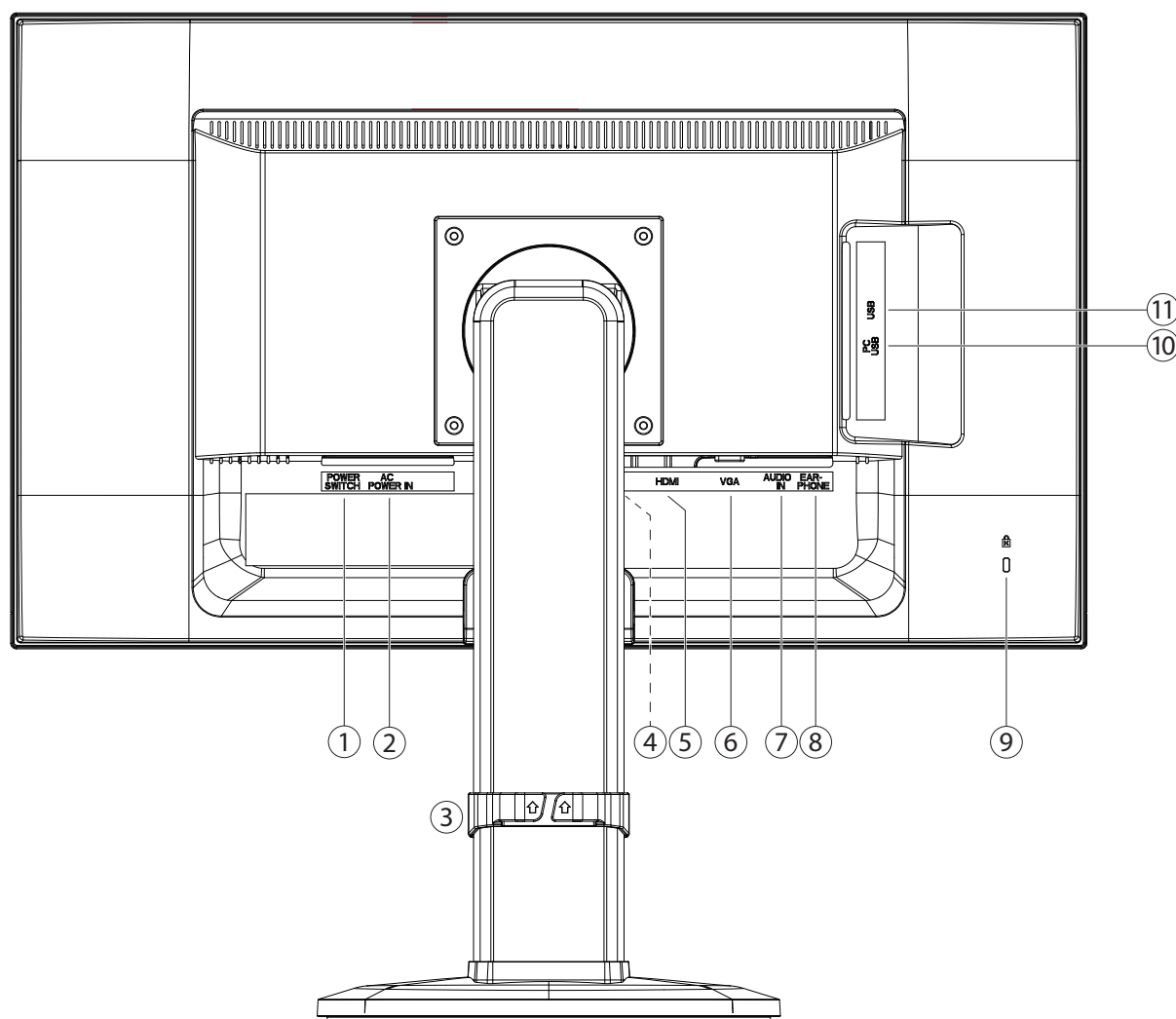
6.6. Monitor settings under Windows® 8

- ▶ Open the “screen resolution” setting. Point the mouse cursor at the top right-hand corner of the screen and then move the mouse cursor downwards.
- ▶ Then click on „Search”.
- ▶ Enter “Display” in the search field.
- ▶ Then click on “Settings” and afterwards on “Display”.

The “Screen resolution” window will be displayed.

- ▶ Click on the “Resolution” list and select the desired resolution.
- ▶ You can also change the orientation of the screen here should you wish to work in portrait or landscape format.

6.7. Rear connections



- 1) On/Off switch (POWER SWITCH)
- 2) Power supply (AC POWER IN)
- 3) Height-adjustable cable holder
- 4) Display port connection (DP)
- 5) HDMI connection (HDMI)
- 6) D-Sub mini 15-pin connection (VGA)
- 7) Audio connection 3.5 mm stereo jack (AUDIO IN)
- 8) Headphone jack



CAUTION!

Using headphones/earphones at high volume can result in permanent damage to your hearing. Before pressing play, set the volume to the lowest setting. Start playback and increase the volume to a comfortable level.

Using headphones/earphones to listen to a device at high volumes for an extended period can damage your hearing.

- 9) Opening for Kensington® lock. This serves to protect the monitor from theft
- 10) PC-USB connection to connect the PC (PC USB)
- 11) 2x USB connection for two USB devices 5V / 900mA max. (USB)

6.8. Connecting the monitor

- ▶ Prepare your computer for the monitor as necessary so that the correct settings are available for your monitor.
- ▶ Make sure that the monitor is not connected to the mains (mains plug is not yet inserted) and the monitor and the computer are not switched on.

6.8.1. Connecting the signal cable

- ▶ Connect the signal cable to the matching VGA, HDMI or Displayport connections on the computer and the monitor.

6.8.2. Connecting the audio cables

- ▶ Connect the audio cable to the matching audio jacks on the computer and on the monitor.

6.8.3. Connecting USB cables to the PC / connecting USB devices

The product has an inbuilt USB hub, offering the facility for the connection of two external USB devices.

- ▶ Connect the USB cable to the PC USB port on the product and to a vacant USB port on the computer.
- ▶ Then connect USB devices to the USB ports on the side of the product. The USB devices will be detected as normal by the operating system of your computer.

6.8.4. Connecting power supply

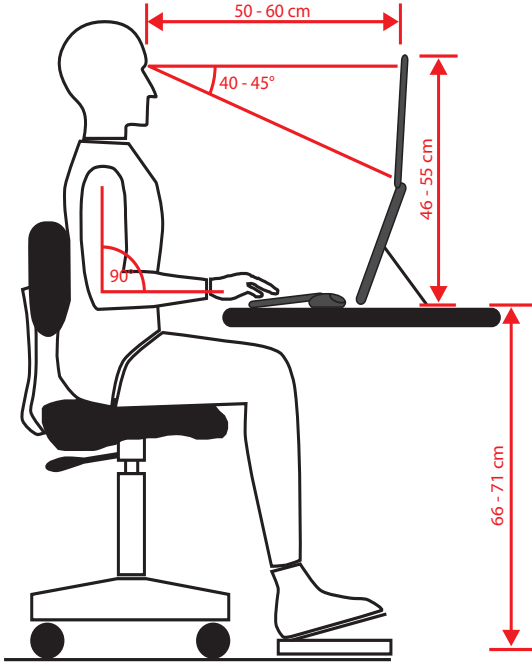
- ▶ Connect the power cord to the power connector of the screen. Connect the other end into an electrical outlet. The mains power outlet must be close to the monitor and easy to access. (Use the same electric current as for the PC).

6.8.5. Switching on the monitor

- ▶ Use the On/Standby button at the front of the device to switch on your monitor. Then switch on your computer.

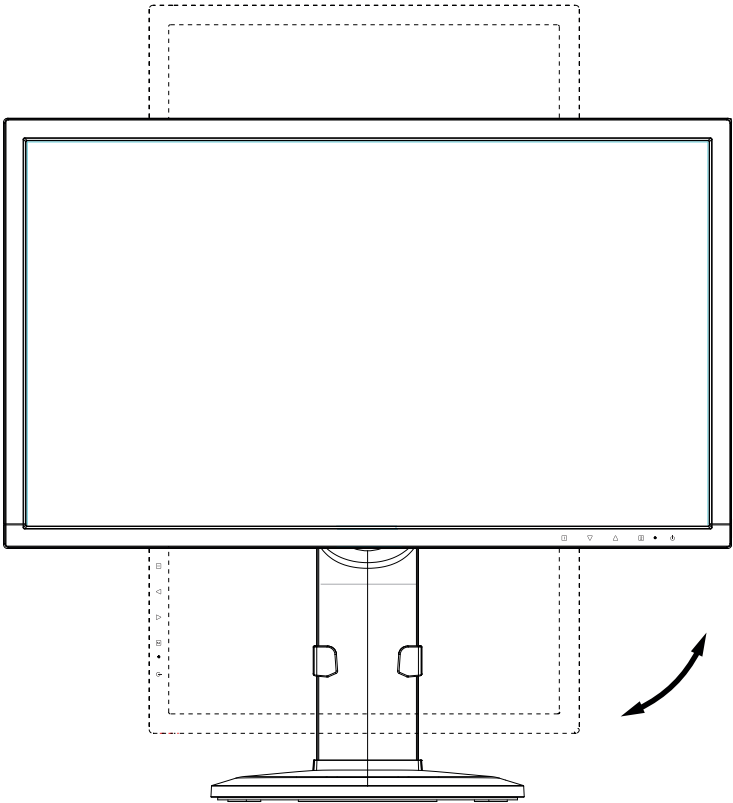
6.9. Setting up the monitor

In order to be able to work optimally, you can adjust both the inclination and the height of the monitor. In addition, it is also possible to change the orientation of the monitor from landscape to portrait format. Set up the monitor in such a way as to avoid reflections, glare, and excessive contrast.



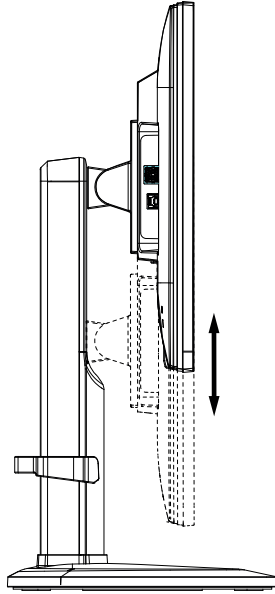
6.9.1. Setting the monitor to landscape/portrait format

- It is possible to change the orientation of the monitor from landscape to portrait format by turning the monitor by 90°. Please make the corresponding settings in the operating system or in the graphics settings on the graphics card for correctly displaying the image on the computer (see page 9).



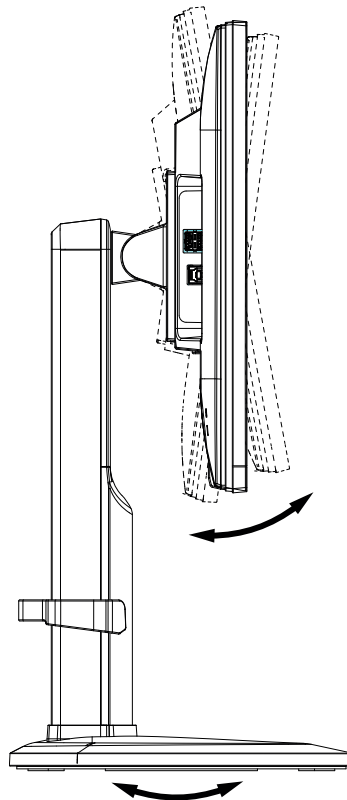
6.9.2. Adjusting the height of the monitor

- ▶ You can adjust the height of the monitor by pulling the monitor up or pushing in down with both hands.

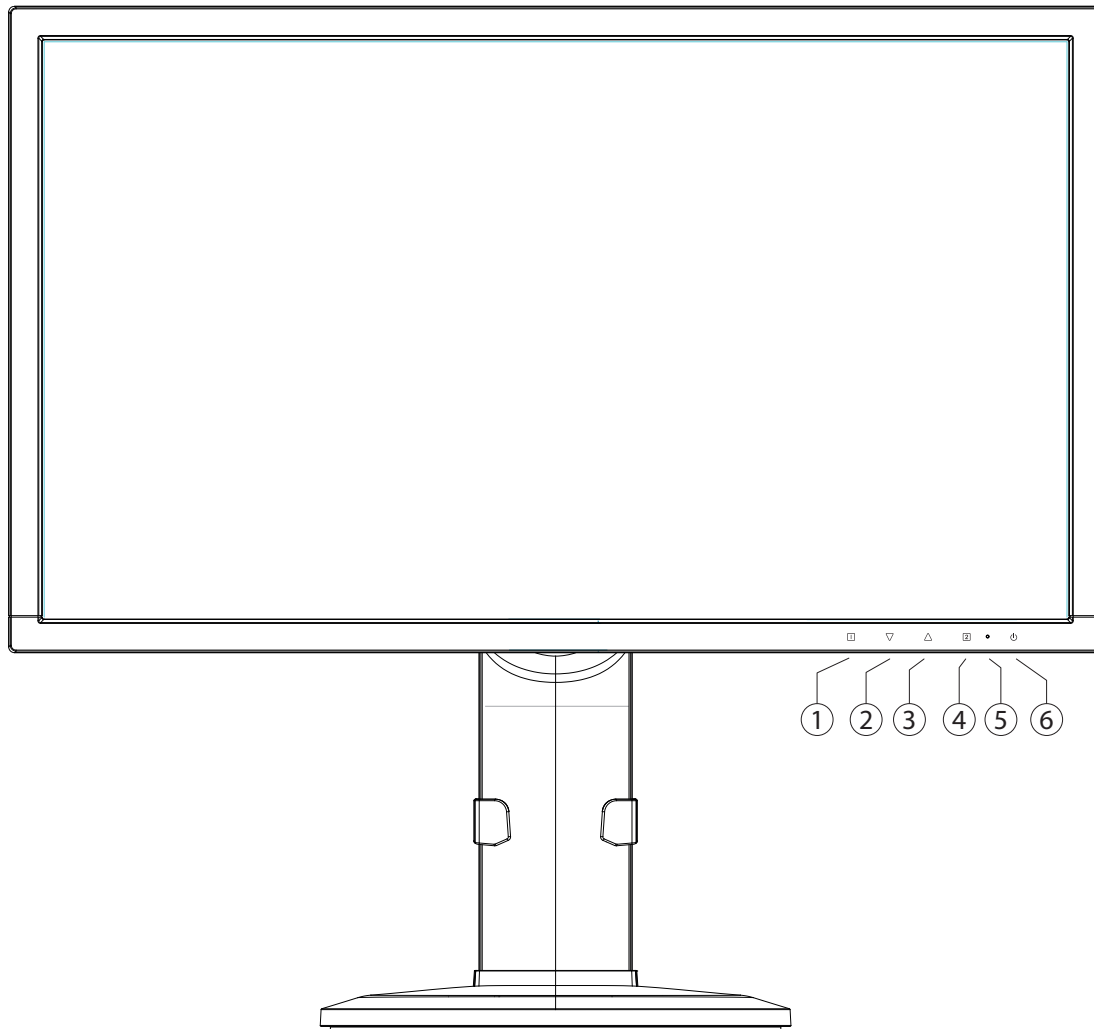


6.9.3. Adjusting the inclination of the monitor / turning the monitor

- ▶ Set the inclination of the monitor by tilting it horizontally either up or down using both hands.
- ▶ In addition, you can also turn the entire monitor with the aid of the rotating base.



7. Operating elements



- 1) This button starts the OSD (on screen display). Press the button to exit the OSD.
 1+2 Blocking of On/Standby button, with deactivated OSD
 1+3 Blocking of the OSD menu button, with deactivated OSD
 To activate/deactivate, keep the key combination pressed down until the displayed bar has moved completely from left to right. A corresponding message will appear on the screen.
- 2) When the OSD is switched on, select a parameter with this button and reduce the value.
 If you are not in the OSD: direct call up of the **CONTRAST/BRIGHTNESS** menu.
- 3) When the OSD is switched on, select a parameter with this button and increase the value.
 If you are not in the OSD: picture mode standard, game, video, landscape, text.
- 4) Confirm the choice of the parameter to be changed with this button.
 If you are not in the OSD: Select input source.
- 5) LED displays the operating status.
- 6) This button lets you switch the monitor on or switches to the standby mode.

8. Setting the screen

The OSD (On Screen Display) menu lets you set specific screen parameters.

8.1. Using the OSD menu

- 1) Touch the button ❶ to activate the OSD.
- 2) Use the ❷/❸ buttons to select the options from the main menu.
- 3) Confirm your selection with the ❹ button.
- 4) Touch the ❶ button to exit the OSD.



IMPORTANT!

The OSD fades out automatically if you do not touch any button at the monitor within the pre-set time.

8.2. The OSD menu

The following explains the main functions or setting possibilities of the OSD.

AUTOMATIC ADJUSTMENT	Automatically adjusts the horizontal and vertical position, phase (fine tuning) and pulse frequency (H size)	
CONTRAST / BRIGHTNESS	CONTRAST	For setting the picture contrast
	BRIGHTNESS	For adjusting the brightness of the picture
	DCR	Here you can switch the DCR function (dynamic contrast) on and off
	ECO	Switch the ECO on and off. Contrast and brightness adjustment as well as DCR are deactivated in ECO mode
	OD	Activate/deactivate the overdrive function. When the function is activated, the reaction time is reduced from 14 ms (typ.) to 6 ms (grey to grey, typ.)
INPUT SOURCE	Switch the signal input here	
AUDIO ADJUSTMENT	VOLUME	Sets the sound output of the loudspeakers
	MUTE	Enables the choice of mute On/Off
	AUDIO INPUT	Choose the source that is used for the audio input (HDMI or Line In). In mode VGA there is only Line In available.
COLOUR SETTING	For selecting the colours to improve brightness and colour saturation	
	COOL	Adds blue to the screen and generates a cooler white
	NORMAL	Adds red to the screen and generates a warmer white and a more intense red
	WARM	Adds green to the screen and generates a darker hue.
	USER COLOUR	Individual settings for red (R), green (G) and blue (B)

COLOUR SETTINGS	PICTURE MODE	offers an optimal display environment corresponding to the displayed content	
		STANDARD	is suitable for general Windows environments and standard monitor settings
		GAME	is optimum for PC/TV games
		VIDEO	is optimum for playing back movies and moving pictures
		LANDSCAPE	is optimum for displaying landscape pictures
		TEXT	is optimum for word processing and text display in a word processing environment
INFORMATION	Displays information about the current input signal from the graphics card of your computer		
MANUAL IMAGE ADJUSTMENT	Horizontal size, H/V position, fine tuning, sharpness, video mode setting and picture mode		
	H./V. POSITION	Sets the horizontal and vertical position of the video image	
	HORIZONTAL SIZE	Sets the width of the screen	
	PHASE	Fine adjustment to improve the image on the screen. Incorrect adjustment, horizontal image error can appear (only in VGA mode).	
	SHARPNESS	For adjusting the sharpness for a signal which does not comply with the physical resolution of the screen	
	VIDEO MODE ADJUSTMENT	Choose a video mode of the options 16:9 und 4:3 . This option is only available when the resolution of the picture is no native 16:9 picture.	
MENU SETTING	Language, OSD position, OSD time out and background		
	LANGUAGE SELECT	Makes it possible for the user to choose from the available languages	
	OSD POSITION	Horizontal and vertical setting of the OSD position	
		OSD H. POSITION	For the horizontal setting of the OSD position
		OSD V. POSITION	For the vertical setting of the OSD position
	OSD TIME OUT	To automatically switch off the on screen display (OSD) after a preset time has elapsed	
	OSD BACKGROUND	Enables switching on and off of the OSD background	
	AUTOMATIC SHUTDOWN	Select if the product will automatically switch to standby mode when not in operation (in HDMI mode only)	
MEMORY RECALL	For restoring the factory settings for video and audio control		

9. Power-saving options

This monitor switches to different power-saving modes which are specified by the respective computer/operating system. This complies with the current requirements for reducing the energy consumption.

The monitor supports the following types of power-saving modes:

Status	Power consumption (nominal value)	Colour of operating light	Standby (approx.)
ON	< 45 watts (max.)	blue	-
STANDBY	< 0,5 watt	orange	2 seconds
EXT. STANDBY*	< 0,5 watt	-	5 seconds

* The device can be switched to the extended standby mode with the button  at the front side.

Depending on the operating system, the monitor remains in the power-saving mode until you press a key or move the mouse (if available).

To switch from the **STANDBY** state to the **ON** operating mode, the monitor needs roughly 2 seconds.

10. Customer service

10.1. Troubleshooting

If problems occur with your monitor, make sure that the monitor has been properly installed. If the problems persist, then read this chapter for information about possible solutions.

10.1.1. Check cables and connections

Start by carefully checking all the cable connections. If the power indicator lights are not on, ensure that the monitor and the computer are properly connected to the power supply.

10.1.2. Faults and possible causes

10.1.3. The monitor does not show a picture:

Check:

- **Power supply:** The mains cable must be firmly inserted in the socket and the power switch must be switched on.
- **Signal source:** Please check if the signal source (computer or similar) is switched on and that the connection cables are firmly inserted in the sockets.
- **Refresh rates:** The current refresh rate must be suitable for the monitor.
- **Power-saving mode:** Press any key or move the mouse to deactivate the mode.
- **Screen saver:** If the computer's screen saver is activated, press any key on the keyboard or move the mouse.
- **Signal connector:** If the pins are bent, contact your customer service.
- Set the applicable values for your monitor.

10.1.4. The picture flickers up/down or is inconsistent:

Check:

- **Signal connector:** If the pins are bent, contact your customer service.
- **Signal connector:** The connectors of the signal cable must be inserted firmly in the sockets.
- **Graphics card:** Check if the settings are correct.
- **Refresh rates.** Select valid settings in your graphics settings.
- **Monitor output signal.** The monitor output signal of the computer must match the technical data of the monitor.
- Remove disruptive devices (cordless phones, loudspeakers or similar) from the environment of the monitor.
- Avoid using monitor extension cables.

10.1.5. Characters are shown dark, the picture is too small, too big, or not centred, etc.:

- Adjust the respective settings.

10.1.6. Colours are not shown cleanly:

- Check the signal cable pins. If the pins are bent, contact your customer service.
- Adjust the colour settings in the OSD menu.
- Avoid using monitor extension cables.

10.1.7. The display is too bright or too dark:

- Check if the video output level of the computer matches the technical data of the monitor.
- Select Autom. adjustment to optimise the settings for brightness and contrast. For optimisation, the display should show a text page (e.g. Explorer, Word, ...).

10.1.8. The picture shakes:

- Check if the operating voltage matches the technical data of the monitor.
- Select Autom. adjustment to optimise the settings for pixels and phase synchronisation. For optimisation, the display should show a text page (e.g. Explorer, Word, ...).

10.2. Do you need more help?

If the above suggestions did not solve your problem please contact us. The following information would help us:

- How is your computer configured?
- What peripheral devices do you use?
- What messages appear on the screen?
- What software were you using when the problem occurred?
- What steps have you already taken to try and rectify the problem?
- Please provide your customer number if you have one.

11. Cleaning

You can increase the lifespan of your monitor with the following measures:



IMPORTANT!

None of the parts inside the housing require cleaning or maintenance.

- Always unplug the device and disconnect all cables before cleaning.
- Do not use solvents, corrosive or aerosol detergents.
- Clean the screen with a soft, lint-free cloth.
- Make sure that no water droplets remain on the monitor. Water can cause permanent discolouration.
- Do not place the screen in strong sunlight or near ultraviolet light.
- Store the packaging material in a safe place; always use this box to transport the monitor.

12. Disposal



Packaging

Your device has been packaged to protect it against transportation damage. The packaging is made of environmentally friendly material which can be recycled.



Device

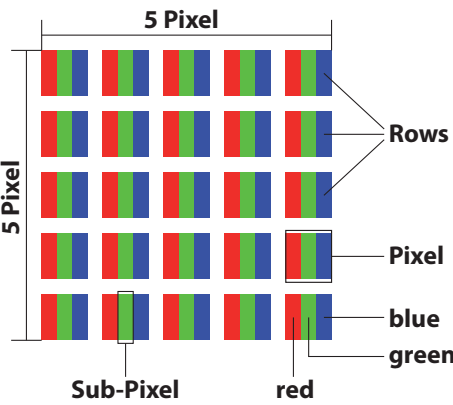
At the end of its service life, the device should not be disposed of with the household rubbish. Enquire about the options for environmentally friendly and appropriate disposal.

13. Pixel defects on screens

For active matrix TFTs with a resolution of **1920 x 1080 pixels**, each of which consist of three sub-pixels (red, green, blue), there are a total of **approx. 6,2 million** control transistors in use. Due to this very high number of transistors and the associated extremely complex manufacturing processes used, occasionally one or more pixels can fail or become incorrectly controlled.

In the past, there were a number of approaches for defining the permitted number of pixel defects. However, these approaches were mostly very complicated and varied from one manufacturer to the next. When handling warranty issues for all of its display products, MEDION therefore adheres to the strict and transparent requirements of the standard **ISO 9241-307, Class II**; which has been briefly summarised below.

The ISO standard ISO 9241-307 defines, amongst other things, the generally applicable guidelines relating to pixel defects. Pixel defects are categorised into four fault classes and three defect types. Every individual pixel consists of three sub-pixels, each of which is assigned a basic colour (red, green, blue).



Pixel fault class	Defect type 1 Continuously lit pixel	Defect type 2 Continuously black pixel	Defect type 3 Defect sub-pixel	
			lit	black
0	0	0	0	0
I	1	1	2	1
			1	3
			0	5
II	2	2	5	0
			5-n*	2xn*
			0	10
III	5	15	50	0
			50-n*	2xn*
			0	100
IV	50	150	500	0
			500-n*	2xn*
			0	1000

n* = 1,5

The table describes the maximum number of pixel failures allowed on the screen, before a warranty claim arises. A warranty claim may be applicable if the above number of defects in a category is exceeded.

14. Technical data

Model	P55664 (MD 20664)
Screen size	61 cm (24"), TFT with LED-backlight
Format (aspect ratio)	16:9
Input voltage	AC 100-240 V ~ 50/60 Hz 0.8 A
Resolution	1920 x 1080 pixels
Brightness	250 cd/m ² (typ.)
Contrast ratio	1,000:1 (typ.)
Dynamic contrast ratio	5,000,000:1
Response time	5 ms (grey to grey, typ.) 2 ms (overdrive, grey to grey, typ.)
RGB input, analogue	VGA 15-Pin D-SUB
HDMI input	HDMI mit HDCP decryption v1.3
Display Port input	Display Port v1.2a
Audio input	3.5 mm stereo jack
Audio output	2 x 2 W max. via loudspeakers 3.5 mm headphone jack
User control	OSD
Temperatures	In operation: 0 °C to +35 °C Not in operation: -20 °C to +60 °C
Humidity (non-condensing)	In operation: < 80% Not in operation: <90%
Weight (with stand)	approx. 5.98 kg
Weight (without stand)	approx. 3.32 kg
Dimensions with stand (WxHxD)	approx. 569 x 404-537 x 244 mm
Dimensions without stand (WxHxD)	approx. 569 x 336 x 53 mm
Maximum height adjustment	approx. 130 mm
Wall mounting:	Vesa standard, hole spacing 100 x 100 mm ¹
Power consumption (stand-by):	<0.5 watt
Power consumption (in operation):	<45 watts (max.)



¹ Wall mount not supplied. When mounting, make sure that the screws do not exceed the size M4 x 10 mm.

15. Legal notice

Copyright © 2015

All rights reserved.

This operating manual is protected by copyright.

Mechanical, electronic and any other form of reproduction is prohibited without the written permission of the manufacturer

Copyright is owned by the company:

Medion AG

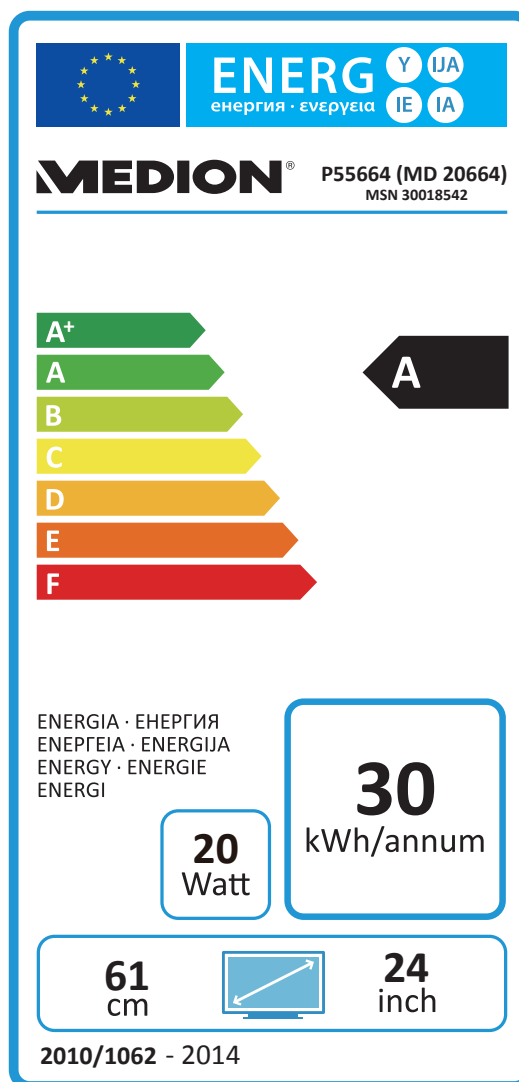
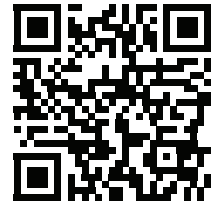
Am Zehnthof 77

45307 Essen

Germany

The operating manual can be reordered via the service hotline and is available for download via the service portal at www.medion.com/gb/service/start/.

You can also scan the QR code above and download the operating manual onto your mobile device via the service portal.



MEDION®