

# *Slim U2 TA Scanner Utility*



*User's Manual*

## **Preface**

©Copyright 2001

All Rights Reserved.

This manual is designed to assist you in using the *Slim U2 TA Scanner Utility*. Information in this document has been carefully checked for accuracy; however, no guarantee is given to the correctness of the contents. The information in this document is subject to change without notice.

In no event will the manufacturer be liable for direct, indirect, special, incidental, or consequential damages arising out of the use or inability to use the product or documentation, even if advised of the possibility of such damages.

This document contains proprietary information protected by copyright. All rights are reserved. No part of this manual may be reproduced by any mechanical, electronic, or other means in any form without prior written permission of the manufacturer.

---

## Table of Contents

---

Preface.....	ii
<b>About the <i>Slim U2 TA Scanner Utility</i>.....</b>	<b>1</b>
Using the Twain Interface .....	2
Lock Tab .....	2
Connecting to the Scanner.....	3
Starting the Slim U2 TA Scanner Utility .....	4
The Slim U2 TA Scanner Utility Interface .....	5
<b>Using the <i>Slim U2 TA Scanner Utility</i> .....</b>	<b>6</b>
Scan Function .....	6
Copy/Print Function .....	7
Custom Function .....	9
OCR Function .....	10
E-mail Function.....	11
<b>Using the Slide/Negative Attachment .....</b>	<b>12</b>
Preferences .....	13
Function Settings .....	13
Select Menu.....	14
<i>Add Application</i> .....	14
<b>Preference Settings</b> .....	<b>17</b>
<i>Display Scanner Status</i> .....	17
<i>Temp Folder</i> .....	18
<i>Smart Scan Status</i> .....	18
<b>Problems with connections</b> .....	<b>19</b>
<i>Scanner does not respond.</i> .....	19
<b>Problems during installation</b> .....	<b>19</b>
<i>Setup wizard does not autostart.</i> .....	19
<i>Cannot find program icons after restarting the computer.</i> .....	19
<i>Setup wizard crashes during installation.</i> .....	19
<b>Other problems with the scanner</b> .....	<b>19</b>
<i>The scanner's scanning lamp does not light up</i> .....	19
<i>Scanner scans very slowly.</i> .....	19
<i>Error: Scanner not found.</i> .....	19
<b>Problems in TWAIN</b> .....	<b>20</b>
<i>The TWAIN window does not appear after choosing Acquire.</i> .....	20
<i>Unable to scan to application software.</i> .....	20

**Problems with the scan ..... 20**  
*The scanned image is too light or too dark..... 20*  
*Moiré patterns appear on the scanned image..... 20*  
*Transitions in color are very abrupt (after scanning with true color scan mode)..... 20*

---

---

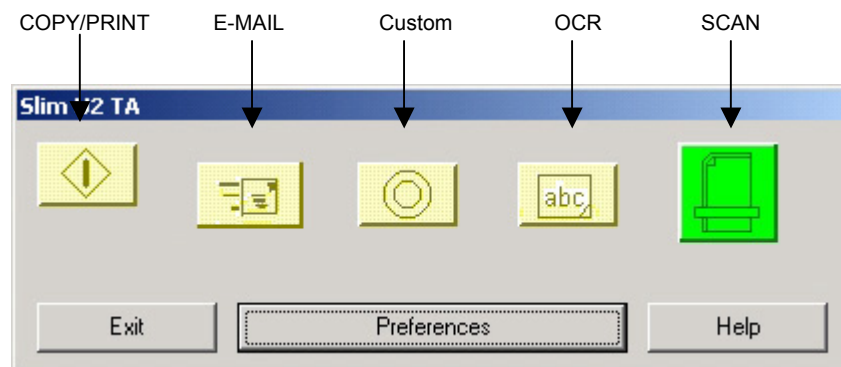
## Chapter 1

---

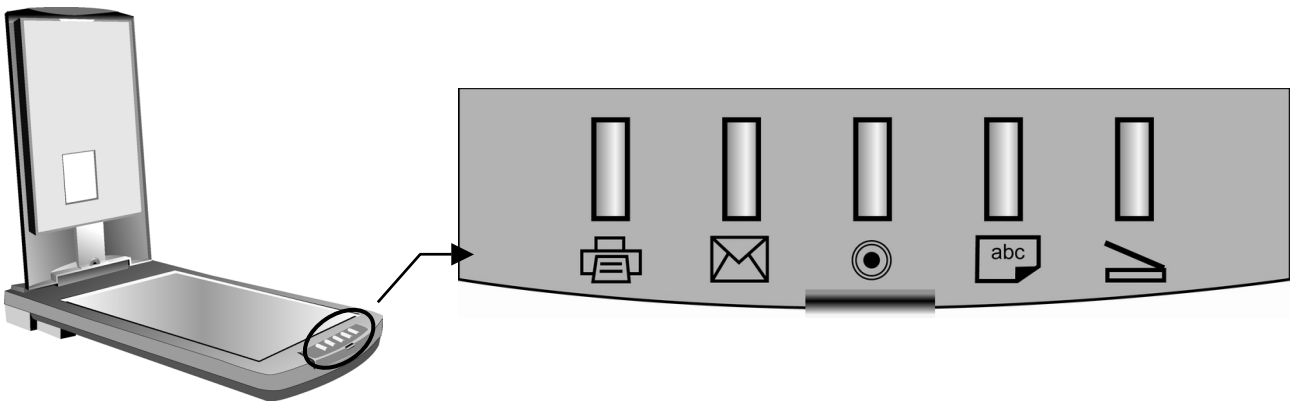
---

### About the *Slim U2 TA Scanner Utility*

The *Slim U2 TA Scanner Utility* provides a convenient interface for accessing the advanced scanning functions. With the *Slim U2 TA Scanner Utility*, you can quickly scan documents or images, make a quick copy of a document and send it to the printer, scan an image and send it directly to your email client, Fax an image or document with a Fax application of your own choice, scan text documents and edit them with word processing software, or define a default application to send your scanned document to for post processing.



The *Slim U2 TA Scanner Utility* interface emulates the control pad on the scanner, and allows you to control scanner functions from your PC:



The *Slim U2 TA Scanner Utility* interface has five buttons: Scan, OCR, Custom, Copy/Print and E-mail. Pressing a button scans an item and sends it to your printer or a specific application, such as your e-mail software.

Each button has a default application pre-selected for post processing. When you install the scanner, the software checks your computer for an application that is appropriate for each button (for example, Microsoft Outlook for the E-mail button). If one is found, the software assigns that application to the button.

If you want to select another application or customize the scan settings, you can create new configurations or edit existing ones. For example, if you scan color photos for use on the Web, you can create a configuration that works best when scanning pictures for use with HTML.

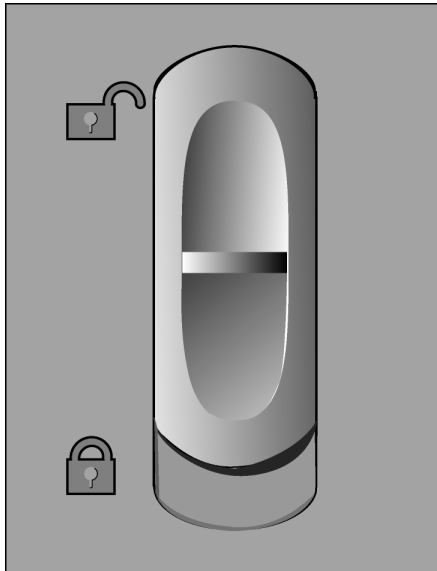
## Using the Twain Interface

When scanning images, by default, the Twain interface is disabled. Instead, all color and image settings are specified in the Advanced Properties Window and images will be directly loaded into your photo application. This applies when pressing the Scan button in Slim U2 TA Scanner Utility as well as when pressing the Scan button on the scanner's front panel.

If you prefer to use the Twain interface, the Advanced Properties Window has a Disable Twain checkbox which you can uncheck to allow Twain to control the image capture. For more information on enabling or disabling the Twain interface, please see the Advanced Properties Window on page 16.

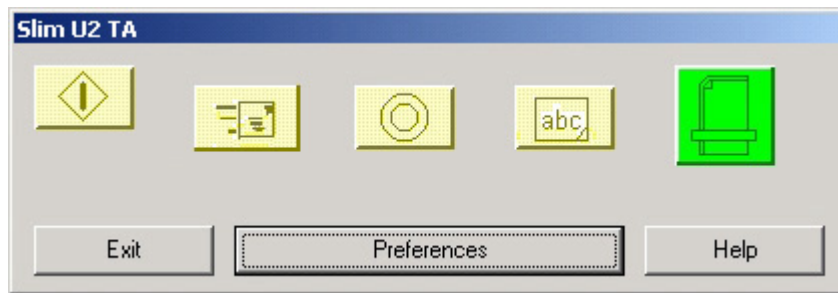
## Lock Tab


Your scanner is also equipped with a lock tab for use when moving or transporting your scanner. By sliding the lock tab on the underside of the scanner to the locked position, the movable internal components of the scanner will be locked into place, preventing damage from shocks or vibration. When you wish to use the scanner again, simply slide the tab back to the unlocked position.



## Connecting to the Scanner

After installing the software and drivers, the *Slim U2 TA Scanner Utility* icon  in the Windows taskbar is available to open the *Slim U2 TA Scanner Utility*:

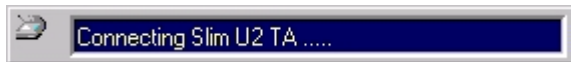


If you have not connected the scanner to the PC, the scanner disconnected  icon is displayed.

You must establish a connection before using the *Slim U2 TA Scanner Utility*. If this icon is displayed, right-click the icon and select **Connect**:



Once you have connected USB port, the Utility will automatic connect to the scanner and appeared the following message box:



If the connection fails, you will see the following message:



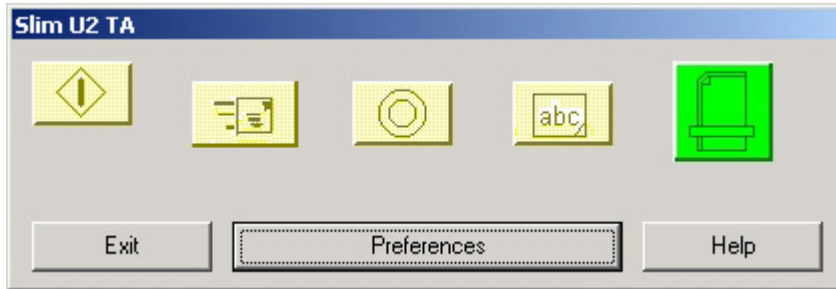
Please refer to [Troubleshooting](#) for more information.


## Starting the Slim U2 TA Scanner Utility

After installing the scanner software and drivers, and then rebooting, the scanner icon  is displayed in the Windows taskbar:



Double-clicking the icon opens the *Slim U2 TA Scanner Utility*:







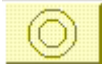




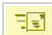
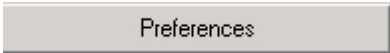
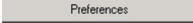
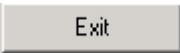
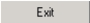

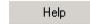
**Note:** If you have not connected the scanner to the PC, the scanner disconnected  icon is displayed. You must establish a connection before using the *Slim U2 TA Scanner Utility*. Refer to [Troubleshooting](#) for more information.

Clicking a button opens the associated application. Click **Help** to display online help for the *Slim U2 TA Scanner Utility*. Click **Exit** to send the Utility back to the Windows Taskbar. Clicking **Preferences** enables you to set preferences for each application.



## The Slim U2 TA Scanner Utility Interface

The following table describes the function of each button on the *Slim U2 TA Scanner Utility* interface:

	<b>Scan Button:</b> Click  to scan documents and images. The images are sent to Photo Suite SE for post processing. You can change the default post processing application by clicking <b>Preferences</b> and selecting a different program.
	<b>Copy/Print Button:</b> Click  to send a scanned image or document directly to a printer or printer application.
	<b>Custom Button:</b> Click  to send a scanned image or document directly to a pre-selected application.
	<b>OCR Button:</b> Click  to convert a scanned item to black and white text for use with word processing software.
	<b>E-Mail Button:</b> Click  to send a scanned image or document directly to an e-mail program.
	<b>Preferences:</b> Click  to set preferences for each button. You can add and choose settings for post processing applications, set scanner status display options, and set advanced properties such as image mode, color control and resolution.
	<b>Exit:</b> Click  to send the <i>Slim U2 TA Scanner Utility</i> back to the Taskbar.
	<b>Help:</b> Click  to display the online help for <i>Slim U2 TA Scanner Utility</i> .

The next chapter describes how to use each function in detail.

---

---

## Chapter 2

---

---

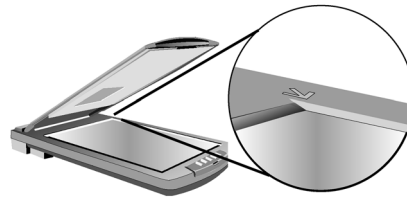
### Using the *Slim U2 TA Scanner Utility*

This chapter will describe each function in detail.

#### Scan Function

Use the **Scan** function to scan images or documents and send them to the TWAIN Interface for image post processing. Follow these instructions:

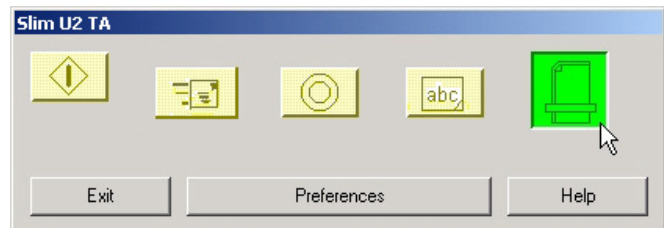
1. Place the item face down on the scanner, with the corner of the paper next to the arrow, as shown:



2. Double-click the *Slim U2 TA Scanner Utility* icon in the Windows taskbar. The *Slim U2 TA Scanner Utility* will open.

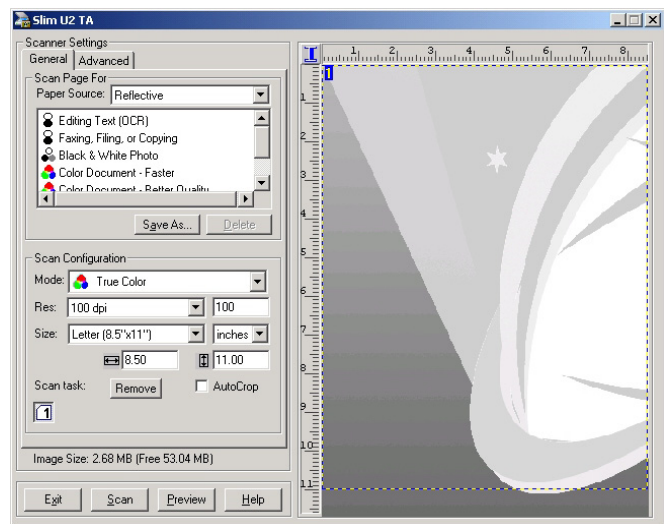


3. Click the **Scan** button on the *Slim U2 TA Scanner Utility*. The TWAIN Interface will open.



4. If the TWAIN interface is enabled, the TWAIN dialog will appear. Make any required adjustments to the Scanner Settings and Scan Configuration, and then click Scan.

By default, the TWAIN interface will be disabled and you will NOT see the TWAIN dialog box. Instead the image will be directly loaded into your processing application. For more information on enabling or disabling the Twain interface, please see the Advanced Properties Window on page 15. Also note, you may need to wait up to ten seconds for the processing application to load.



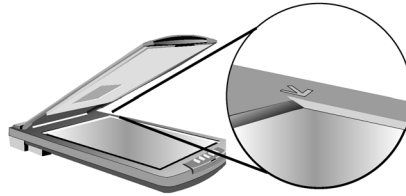
**Note: For information on setting the TWAIN interface options, refer to the TWAIN interface online help.**

**Note: You can set the post processing application that the TWAIN Interface sends the image to. Please refer to the [Preferences](#) section for more information about settings.**

## Copy/Print Function

Use the Copy/Print function to scan images or documents and send them to the printer. Follow these instructions:

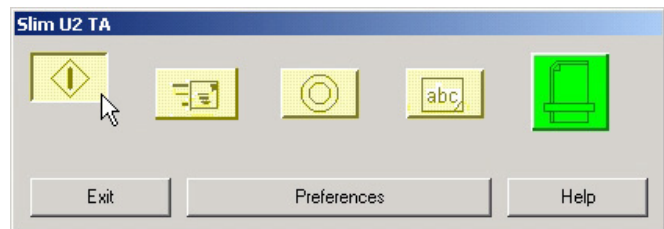
1. Place the item face down on the scanner, with the corner of the paper next to the arrow, as shown:



2. In Windows, double-click the *Slim U2 TA Scanner Utility* icon in the Windows taskbar. The *Slim U2 TA Scanner Utility* will open.

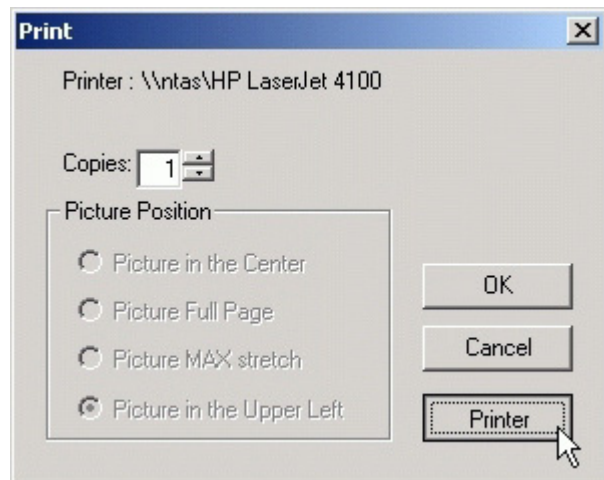


3. Click the **Copy/Print** button on the *Slim U2 TA Scanner Utility* interface.

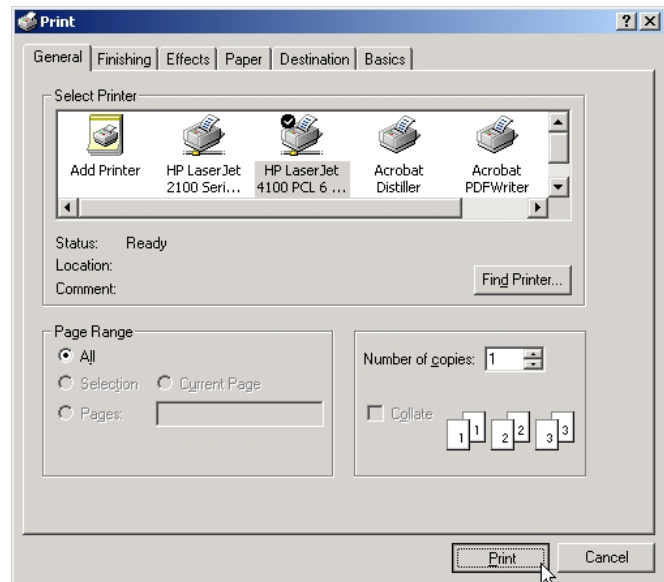


4. After the image is scanned, the **Print** dialog box opens. Note that you must wait at least ten seconds for the **Print** dialog box to load.

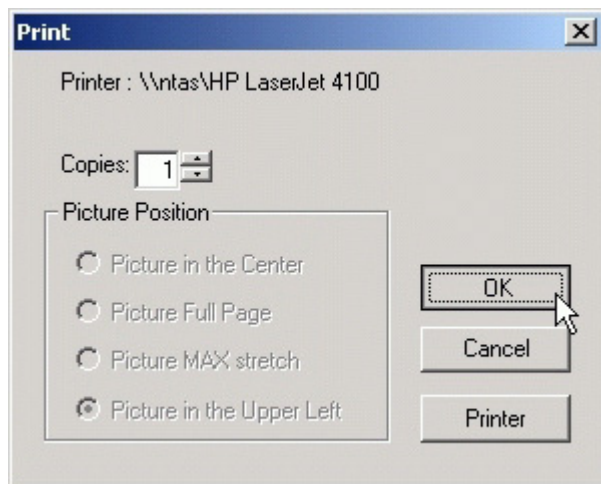
**Note: By default, the image is scanned directly to the selected printer without opening the TWAIN Interface.**



5. Click **Printer** to select a printer. A new **Print** dialog box will open. Select a printer icon from the menu. Click **Print** to print out the scanned image, or click **Cancel** to returned to the Scanner Utility Print dialog box.



**Note: Picture Position is not supported in this driver version.**



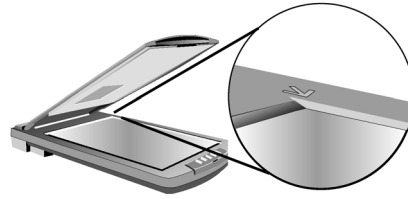
6. Click **OK**. The document is then sent to your printer.



## Custom Function

Use the **Custom** function to scan images and documents and send them to a user-defined application for post processing.

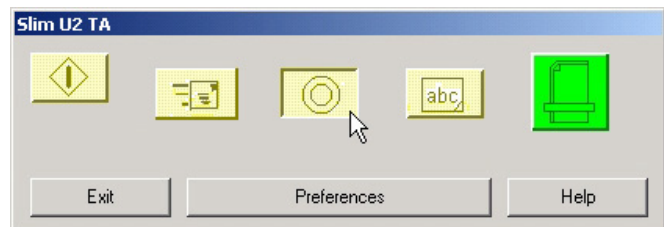
1. Place the item face down on the scanner, with the corner of the paper next to the arrow, as shown:



2. Double-click the *Slim U2 TA Scanner Utility* icon in the Windows taskbar. The *Slim U2 TA Scanner Utility* will open.

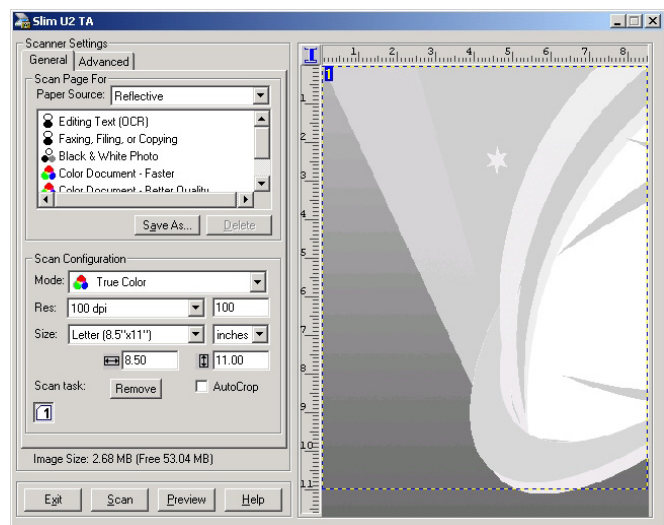


3. Click the **Custom** button on the *Slim U2 TA Scanner Utility*. The TWAIN Interface will open.



4. If the TWAIN interface is enabled, the TWAIN dialog will appear. Make any required adjustments to the Scanner Settings and Scan Configuration, and then click **Scan**.

By default, the TWAIN interface will be disabled and you will NOT see the TWAIN dialog box. Instead the image will be directly loaded into your processing application. For more information on enabling or disabling the Twain interface, please see the Advanced Properties Window on page 16. Also note, you may need to wait up to ten seconds for the processing application to load.

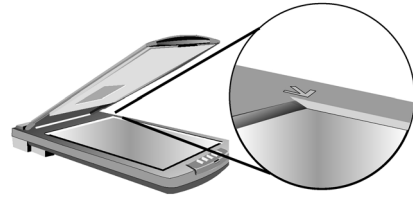


**Note: For information on setting the TWAIN interface options, refer to the TWAIN interface online help.**

## OCR Function

Use the **OCR** function to scan images or documents and send them to your default word processing application. Follow these instructions:

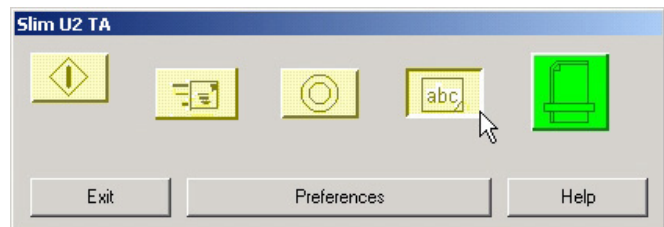
1. Place the item face down on the scanner, with the corner of the paper next to the arrow, as shown:



2. Double-click the *Slim U2 TA Scanner Utility* icon in the Windows taskbar. The *Slim U2 TA Scanner Utility* will open.

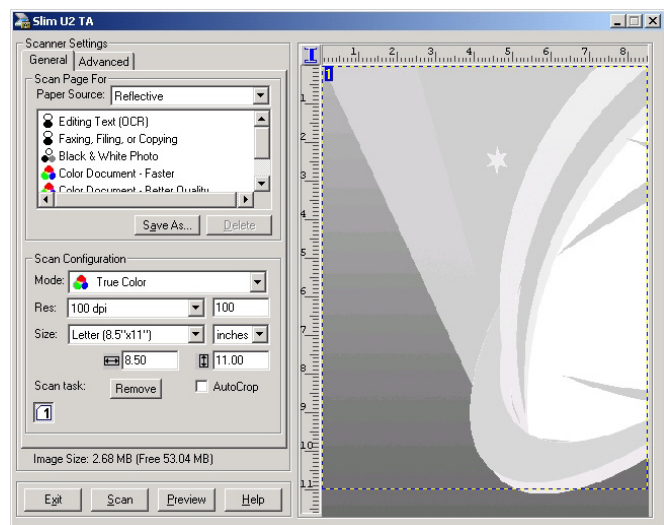


3. Click the **OCR** button on the *Slim U2 TA Scanner Utility*. The TWAIN Interface will open.



4. If the TWAIN interface is enabled, the TWAIN dialog will appear. Make any required adjustments to the Scanner Settings and Scan Configuration, and then click **Scan**.

By default, the TWAIN interface will be disabled and you will NOT see the TWAIN dialog box. Instead the image will be directly loaded into your processing application. For more information on enabling or disabling the Twain interface, please see the Advanced Properties Window on page 16. Also note, you may need to wait up to ten seconds for the processing application to load.

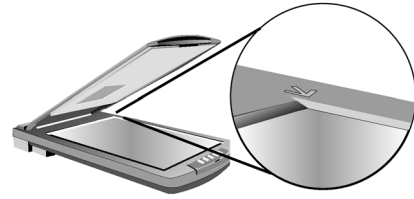


**Note: Before you can use this function, you must assign a default application for post processing. Refer to [Preferences](#) for more information.**

## E-mail Function

Use the **E-mail** function to scan images and documents and send them to your e-mail program. Follow these instructions:

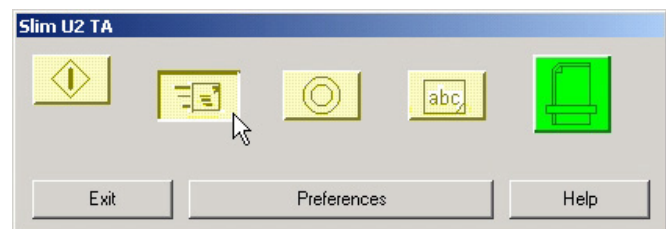
1. Place the item face down on the scanner, with the corner of the paper next to the arrow, as shown:



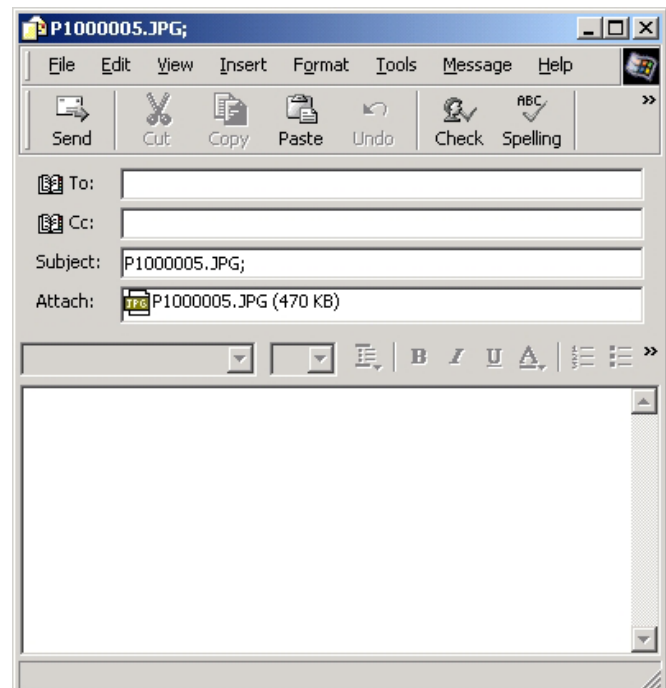
2. Double-click the *Slim U2 TA Scanner Utility* icon in the Windows taskbar. The *Slim U2 TA Scanner Utility* will open.



3. Click the **E-mail** button on the *Slim U2 TA Scanner Utility*. The image will then be scanned.



4. After the image is scanned, it is sent to your e-mail program and attached to an e-mail, ready to be addressed and sent. Note that you must wait at least ten seconds for the e-mail program to load.



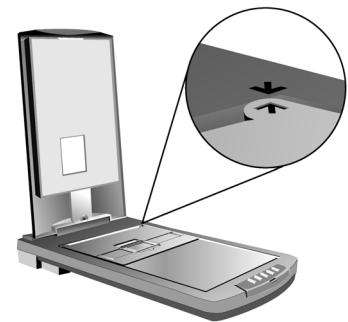
## Using the Slide/Negative Attachment

Use the slide/negative attachment to scan negatives and slides and edit the images in your software image editing program. Follow these instructions:

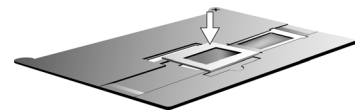
1. Remove the mirror cover.



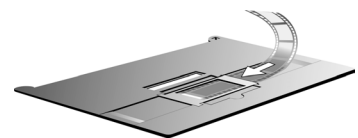
2. Place the mask attachment on the scanner plate with the arrows matching.



3. Slide:
  - a. Lift the slide/negative holder and close it on the right side of the hinge.
  - b. Place the slide in the space provided. Make sure the slide is oriented correctly.



4. Negative:
  - a. Hold the negative face up and slide it under the negative holder as show.
  - b. Position the negative in the space provided.




5. Proceed with scanning as usual.

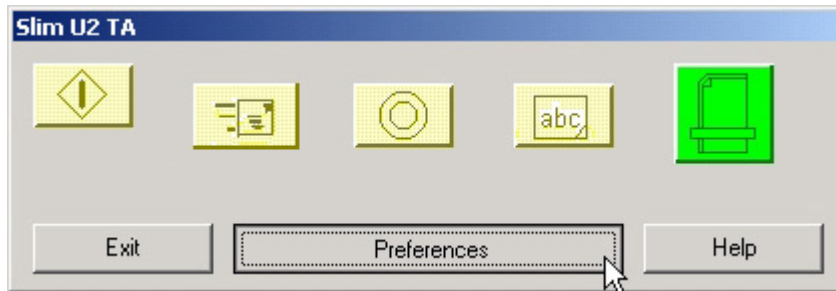
### Notes:


- **When using Reflective mode, do not forget to attach the mirror cover to the scanner cover.**
- **When using Transparency Negative or Transparency Positive mode, do not forget to remove the mirror cover from the scanner cover.**



## Preferences

The **Preferences** dialog box enables you to configure the settings for each button and assign applications for post processing. Double-click the scanner icon  in the Windows taskbar to open the *Slim U2 TA Scanner Utility*:

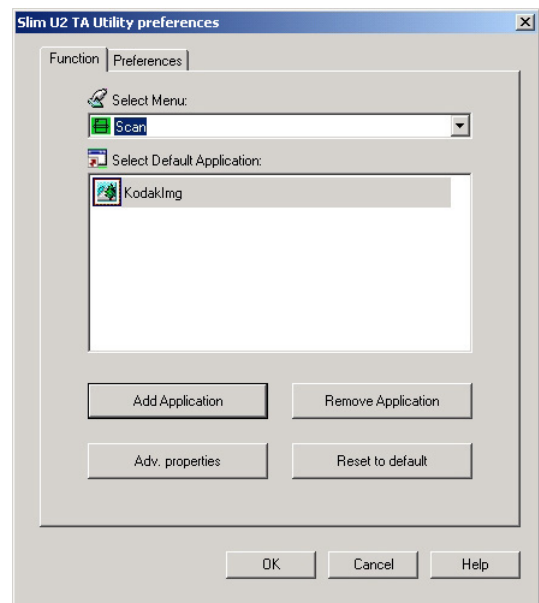


**Note:** If you have not connected the scanner to the PC, the scanner disconnected  icon is displayed. You must establish a connection before using the *Slim U2 TA Scanner Utility*.

Click Preferences to open the *Slim U2 TA Scanner Utility* Preferences dialog box:

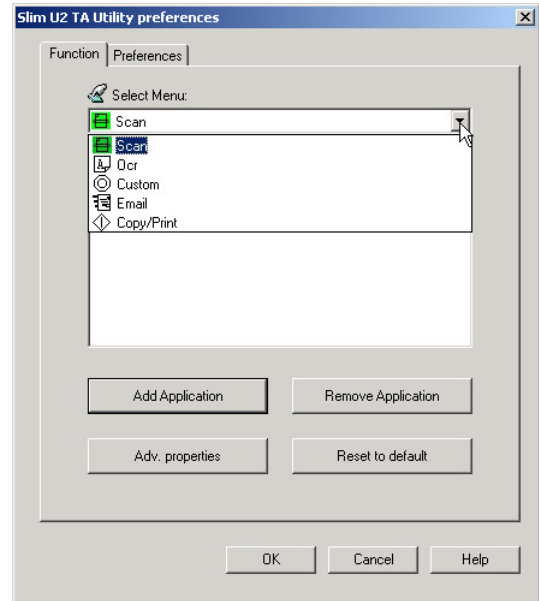
## Function Settings

This section explains how to use the options in the *Slim U2 TA Scanner Utility* Preferences Function Settings tab.



## Select Menu

The Select Menu enables you to choose which button you want to configure and set preferences for. Choose a button from the drop-down menu:

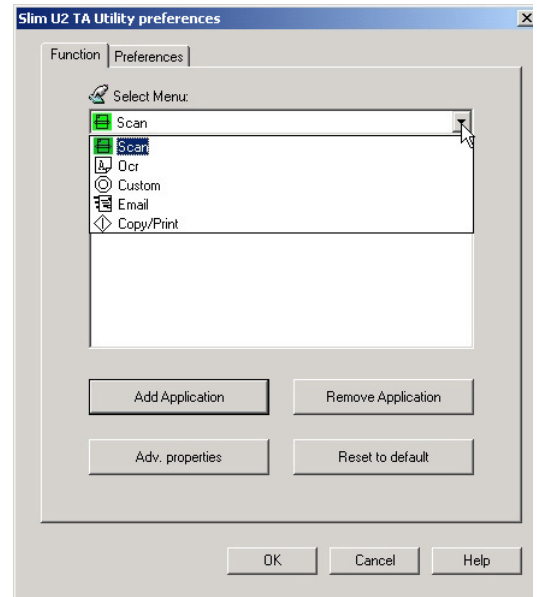


After selecting a button, you can add or remove an application associated with it, set advanced properties, or reset the button to the default values.

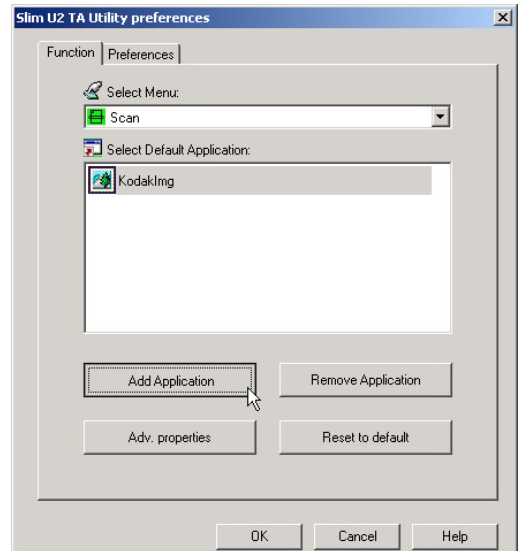
### **Add Application**

Use **Add Application** to associate an application to a button for post processing scanned images or documents. Follow these instructions:

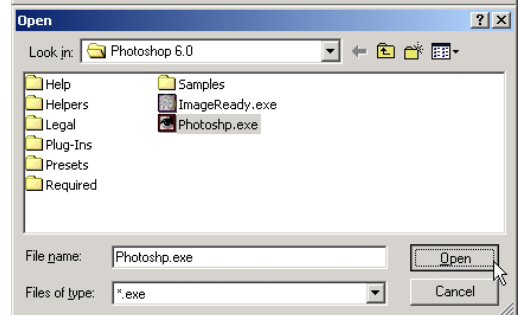
1. Select a button from the drop down list.



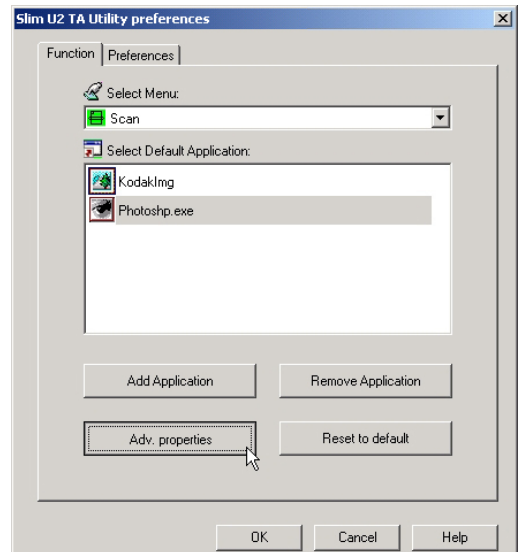
2. The button's default application list is displayed:



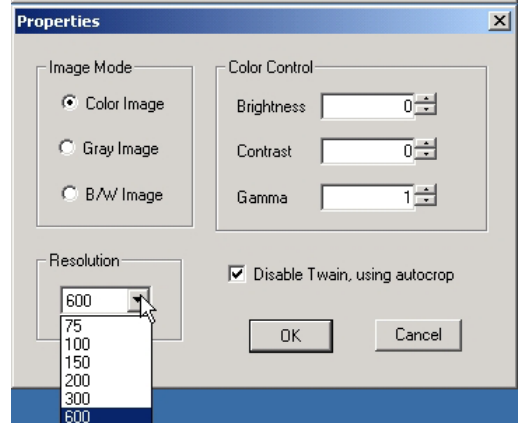
3. Click **Add Application**. The **Open** application dialog box is displayed:



4. Browse to the location of the application that you want associated with the button. Click **Open**. The application is added to the default application list:



5. Select the application and click **Adv. Properties**. The **Properties** dialog box is displayed:



The Properties dialog box enables you to set the following items:

- **Image Mode:** select color, gray, or black & white (B/W) for output image mode.
- **Color Control:** enter the brightness, contrast, and gamma in the boxes.
- **Resolution:** select the output resolution from the drop-down menu. You can select a resolution from 75 to 600 dpi.

Check the box next to **Disable TWAIN, using autocrop**, to have images scanned directly to the application without being opened in the TWAIN dialog first. The image is automatically cropped before opening in the application.

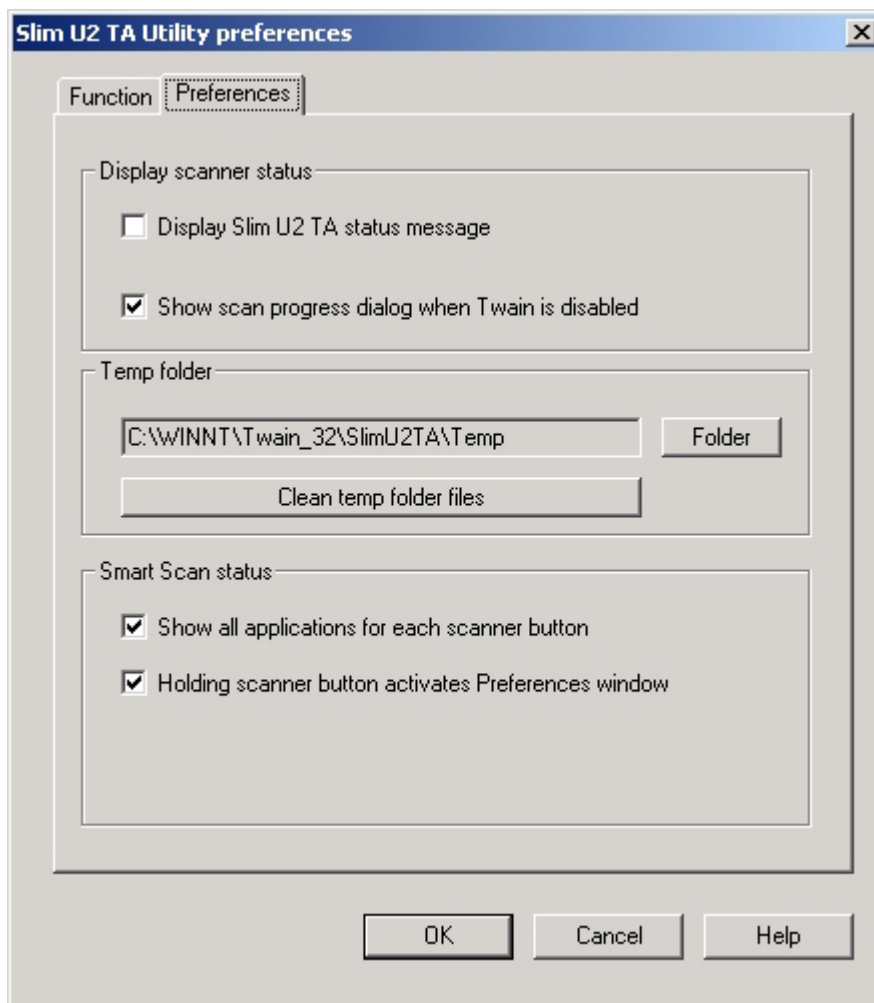
Both the Scan button in the Slim U2 TA Scanner Utility as well as the Scan button on the scanner front panel will use these settings.

Click **OK** to save your changes and return to the ***Slim U2 TA Scanner Utility Preferences*** dialog box or click **Cancel** to exit without saving changes.

To remove an application from the button's default application list, select the application and click **Remove Application**. To return the button's application list to the default settings, select the application and click **Reset to default**.

## Preference Settings

In the *Slim U2 TA Scanner Utility* Preferences dialog box click Preferences to open the following screen:

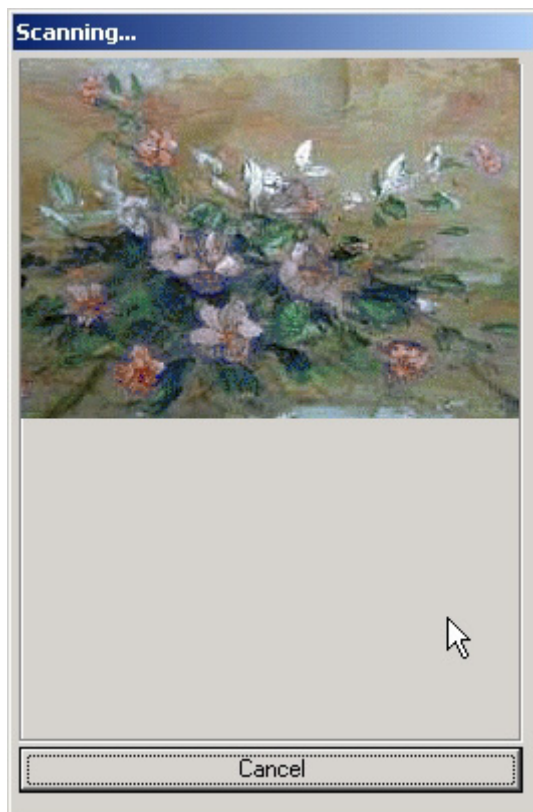


### ***Display Scanner Status***

**Display Slim U2 TA Scanner status message:** click this box to display a *Scanner Activated* message at the top of the Windows desktop:



**Show scan progress dialog when TWAIN is disabled:** click this box to display a scan progress window when the TWAIN box is disabled.



### ***Temp Folder***

This setting enables you to select the folder where image files are stored. Set this folder on a drive with sufficient disk space for large image files. Click **Clean temp folder files** to delete the files in the temp folder.

### ***Smart Scan Status***

**Show all applications for each scanner button:** uncheck this box to display only the applications that were assigned to the button when you installed the software.

**Holding scanner button activates Preferences window:** if this box is checked, pressing and holding any of the buttons on the scanner will open the *Slim U2 TA Scanner Utility* Preference dialog box.

---

---

## Troubleshooting

---

---

This section provides information on maintaining the scanner and answers questions to help you solve problems you might encounter when using it. If you continue to experience problems, or if the problem is not covered in this guide, please contact your local dealer.

### Problems with connections

#### ***Scanner does not respond.***

- Make sure all connections are secure and correct.
- Restart the computer and try again.
- Reinstall the software, restart your computer and then try again.
- Check that the Universal Serial Bus of your computer is Enabled. This setting (Universal Serial Bus Controller) can be found under the System option in your Control Panel in the Device Manager (if in doubt, check Windows Help).

### Problems during installation

#### ***Setup wizard does not autostart.***

- Check your computer system to see if Autostart is available.
- Under Windows, check if your CD-ROM is set to Auto Insert Notification. This setting can be found under the System option in your Control Panel in the properties of your particular CD-ROM model (if in doubt, check Windows Help).

#### ***Cannot find program icons after restarting the computer.***

- If program icons do not appear in the Start menu under Programs, try reinstalling.

#### ***Setup wizard crashes during installation.***

- Reinstall the software.

### Other problems with the scanner

#### ***The scanner's scanning lamp does not light up.***

- Make sure the TWAIN window appears on screen. If not, reselect the TWAIN source and activate the TWAIN interface again.
- Make sure all connections are secure and correct.

#### ***Scanner scans very slowly.***

- Make sure the resolution of the scanner is not set too high (preferably 300 dpi or lower).
- Check your connections (see [Problems with connections](#) above).

#### ***Error: Scanner not found.***

Please check the following:

(1) USB setting is enabled. (2) Power adapter is plugged into the scanner connector. (3) USB cable is properly connected from the scanner to your PC.

Displayed if there is a problem communicating with the scanner. May be caused by power outage, misconnection or an installation problem. Please check your connections and check that your wall socket and power switches are all turned on.

## Problems in TWAIN

### ***The TWAIN window does not appear after choosing Acquire.***

- Make sure all connections are secure and correct.
- Check that the scanner is selected in the Select Source dialog box.
- Reinstall the software.
- Check your connections (see [Problems with connections](#) above).

### ***Unable to scan to application software.***

- Check that the scanner is selected in the Select Source dialog box.
- Make sure all connections are secure and correct.
- Close all open programs and Windows, restart your computer and try again.

## Problems with the scan

### ***The scanned image is too light or too dark.***

- Check if the Scan Window is clean.
- Adjust the brightness or color gamma settings and try again.

### ***Moiré patterns appear on the scanned image.***

- The original image is commercially printed. Try reducing the resolution by a small amount, for example from 200 dpi to 190 dpi; keep reducing until the patterns disappear. Or you may check **Descreen** under **Advanced** tab within TWAIN interface.

### ***Transitions in color are very abrupt (after scanning with true color scan mode).***

- This is normal if you are using a display mode that can only display 256 or 16 colors. Try using a high- or true-color mode instead. Refer to the Windows Manual and your display card guide for more information.